

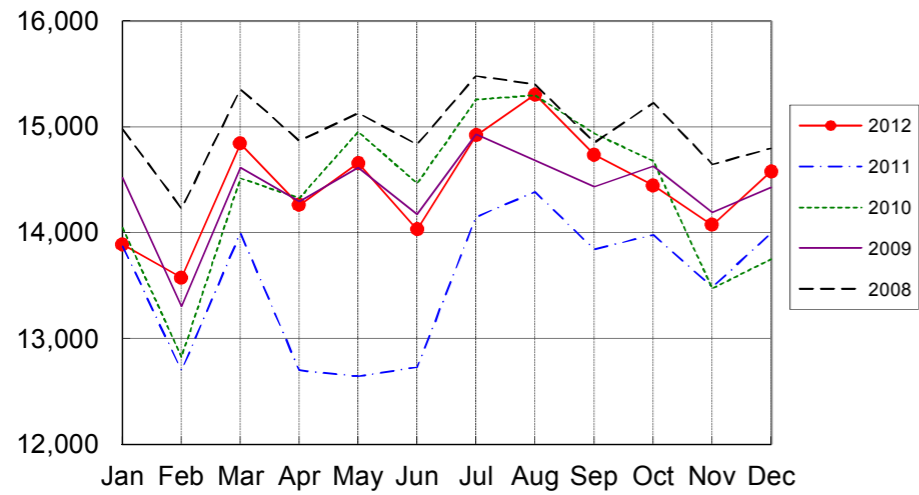
NARITA AIRPORT TRAFFIC STATISTICS -2012(JAN-DEC)

NARITA INTERNATIONAL AIRPORT CORPORATION

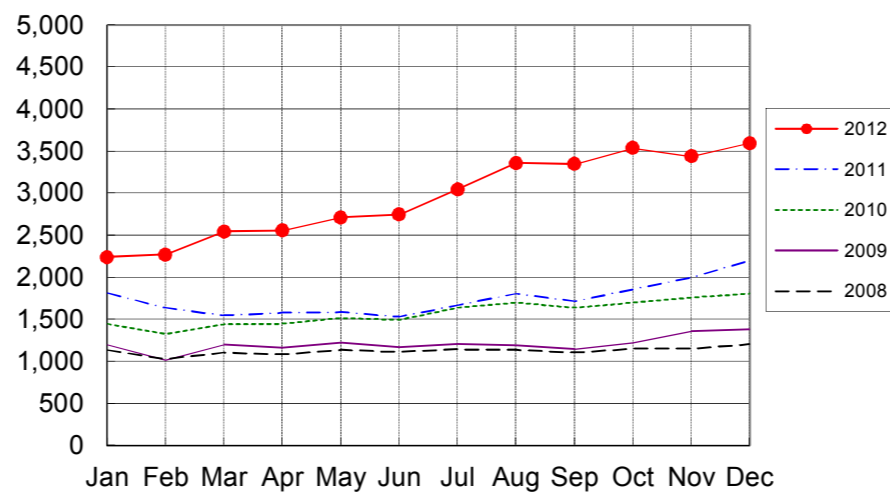
MONTH DESCRIPTION	AGGREGATE 21-May-78~ 31-Dec-11	2012												TOTAL	AVERAGE PER DAY	AGGREGATE 21-May-78 31-Dec-12		
		ACTUAL															PROV.	
		JAN	FEB	MAR	APR	MAY	JUN	JUL	AUG	SEP	OCT	NOV	DEC					
AIRCRAFT MOVEMENTS	4,245,103	16,131	15,846	17,385	16,816	17,370	16,778	17,967	18,664	18,081	17,982	17,512	18,172	208,704	570	4,453,807		
		(103)	(111)	(112)	(118)	(122)	(118)	(114)	(115)	(116)	(114)	(113)	(112)	(114)				
International	3,990,847	13,891	13,576	14,841	14,263	14,659	14,032	14,921	15,305	14,736	14,446	14,075	14,580	173,325	474	4,164,172		
		(100)	(107)	(106)	(112)	(116)	(110)	(105)	(106)	(106)	(103)	(104)	(104)	(107)				
PAX Flight	3,309,636	12,167	11,523	12,482	12,109	12,503	11,943	12,796	13,238	12,521	12,284	11,881	12,560	148,007	404	3,457,643		
		(100)	(104)	(105)	(115)	(116)	(112)	(106)	(106)	(106)	(103)	(104)	(105)	(107)				
Cargo Flight	613,938	1,574	1,929	2,203	1,971	1,953	1,971	2,008	1,917	2,046	1,965	2,057	1,843	23,437	64	637,375		
		(98)	(128)	(120)	(97)	(114)	(101)	(102)	(107)	(109)	(106)	(105)	(94)	(106)				
Others	67,273	150	124	156	183	203	118	117	150	169	197	137	177	1,881	5	69,154		
		(138)	(79)	(58)	(136)	(185)	(118)	(104)	(95)	(112)	(128)	(146)	(143)	(113)				
Domestic	254,256	2,240	2,270	2,544	2,553	2,711	2,746	3,046	3,359	3,345	3,536	3,437	3,592	35,379	97	289,635		
		(123)	(139)	(165)	(162)	(171)	(179)	(183)	(186)	(195)	(190)	(172)	(163)	(169)				
PAX Flight	238,300	2,222	2,249	2,503	2,396	2,538	2,426	2,764	3,278	3,283	3,456	3,351	3,490	33,956	93	272,256		
		(124)	(138)	(165)	(154)	(164)	(162)	(169)	(184)	(194)	(190)	(170)	(161)	(165)				
Cargo Flight	172	0	0	0	0	0	0	0	0	0	51	51	55	157	0	329		
		-	-	-	-	-	-	-	-	-	(5,100)	-	-	(5,233)				
Others	15,784	18	21	41	157	173	320	282	81	62	29	35	47	1,266	3	17,050		
		(56)	(162)	(141)	(714)	(455)	(914)	(972)	(338)	(230)	(74)	(146)	(134)	(365)				
TERMINAL PASSENGERS	796,873,141	2,549,983	2,454,791	2,833,612	2,530,459	2,599,204	2,653,400	2,932,927	3,294,083	2,872,066	2,703,598	2,609,448	2,760,025	32,793,596	89,600	829,666,737		
		(101)	(104)	(130)	(151)	(129)	(123)	(117)	(117)	(113)	(109)	(111)	(111)	(117)				
International	767,845,387	2,359,417	2,266,293	2,604,403	2,343,417	2,398,735	2,456,139	2,648,913	2,888,007	2,519,276	2,358,328	2,282,125	2,432,278	29,557,331	80,758	797,402,718		
		(100)	(101)	(127)	(149)	(127)	(121)	(112)	(109)	(105)	(102)	(105)	(105)	(112)				
Japanese	442,121,180	1,229,432	1,365,345	1,595,226	1,189,657	1,269,939	1,293,340	1,409,406	1,749,105	1,525,520	1,286,989	1,261,275	1,279,831	16,455,065	44,959	458,576,245		
		(101)	(111)	(135)	(133)	(120)	(118)	(108)	(106)	(98)	(95)	(97)	(100)	(109)				
Non-Japanese	173,261,735	599,789	503,000	621,679	723,996	582,924	595,599	703,565	685,390	571,690	605,319	570,750	633,033	7,396,734	20,210	180,658,469		
		(93)	(82)	(126)	(225)	(169)	(151)	(139)	(133)	(117)	(109)	(113)	(112)	(124)				
Transit	152,462,472	530,196	397,948	387,498	429,764	545,872	567,200	535,942	453,512	422,066	466,020	450,100	519,414	5,705,532	15,589	158,168,004		
		(103)	(102)	(106)	(122)	(112)	(106)	(98)	(95)	(118)	(115)	(120)	(112)	(108)				
Domestic	29,027,754	190,566	188,498	229,209	187,042	200,469	197,261	284,014	406,076	352,790	345,270	327,323	327,747	3,236,265	8,842	32,264,019		
		(133)	(143)	(174)	(181)	(167)	(155)	(200)	(240)	(237)	(215)	(199)	(180)	(188)				
CARGO (International) (t)	48,173,994	136,104	159,519	183,273	167,135	157,781	163,637	162,358	156,309	165,587	166,543	169,970	163,991	1,952,207	5,334	50,126,201		
		(93)	(113)	(114)	(97)	(104)	(102)	(100)	(106)	(105)	(101)	(103)	(98)	(103)				
Loaded	22,479,118	61,852	71,623	82,171	76,659	70,738	74,358	71,531	69,980	74,289	71,777	73,037	70,603	868,618	2,373	23,347,736		
		(91)	(109)	(113)	(98)	(99)	(96)	(99)	(108)	(106)	(99)	(101)	(95)	(101)				
Export	16,486,169	47,257	56,579	62,228	56,847	51,261	54,851	49,470	48,560	51,750	49,353	46,780	47,927	622,863	1,702	17,109,032		
		(87)	(103)	(109)	(91)	(90)	(87)	(84)	(97)	(94)	(88)	(84)	(81)	(91)				
Transit	5,992,949	14,595	15,044	19,943	19,812	19,477	19,507	22,061	21,420	22,539	22,424	26,257	22,676	245,755	671	6,238,704		
		(105)	(136)	(128)	(125)	(134)	(134)	(160)	(150)	(152)	(139)	(162)	(153)	(140)				
Unloaded	25,694,876	74,252	87,896	101,102	90,476	87,043	89,279	90,827	86,329	91,298	94,766	96,933	93,388	1,083,589	2,961	26,778,465		
		(94)	(117)	(114)	(96)	(109)	(107)	(102)	(104)	(104)	(103)	(104)	(101)	(104)				
Import	19,851,536	61,433	72,858	81,305	71,218	68,514	70,048	69,605	65,418	69,466	72,912	72,277	71,349	846,403	2,313	20,697,939		
		(94)	(113)	(111)	(90)	(102)	(101)	(92)	(94)	(94)	(96)	(93)	(91)	(97)				
Transit	5,843,340	12,819	15,038	19,797	19,258	18,529	19,231	21,222	20,911	21,832	21,854	24,656	22,039	237,186	648	6,080,526		
		(96)	(143)	(129)	(124)	(140)	(137)	(152)	(152)	(151)	(139)	(155)	(152)	(139)				
FUEL SUPPLIED TO AIRCRAFT (kl)	142,959,020	369,227	357,144	388,155	381,833	381,051	378,888	397,196	407,831	386,470	389,282	387,789	403,313	4,628,179	12,645	147,587,199		
		(94)	(103)	(122)	(124)	(115)	(112)	(110)	(112)	(110)	(107)	(110)	(109)	(110)				

NOTE : ()% ; Changes from the same month of previous year.

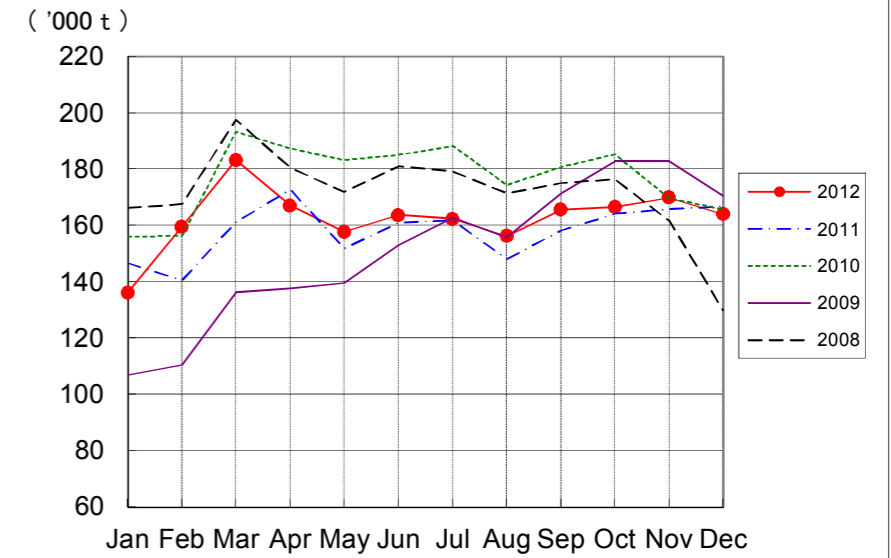
**AIRCRAFT MOVEMENTS
(International)**



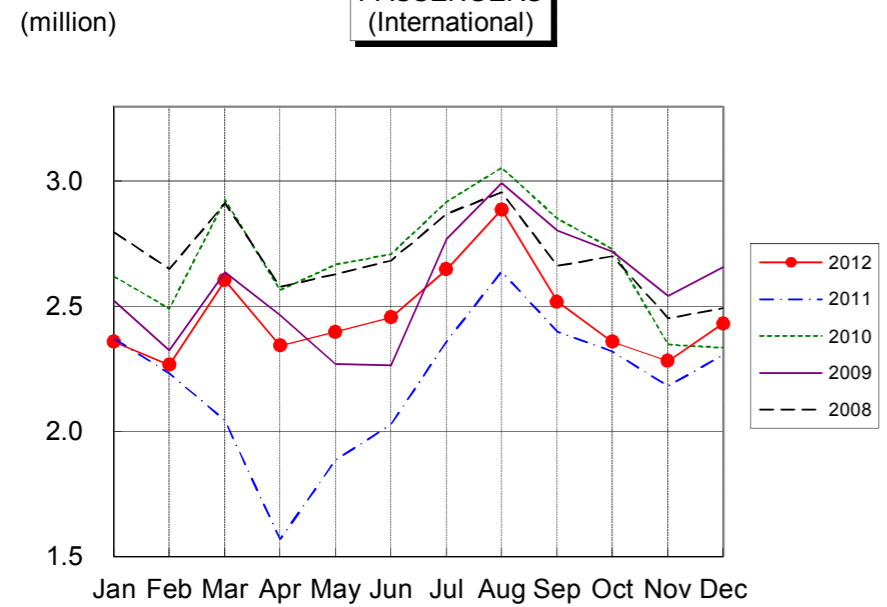
**AIRCRAFT MOVEMENTS
(Domestic)**



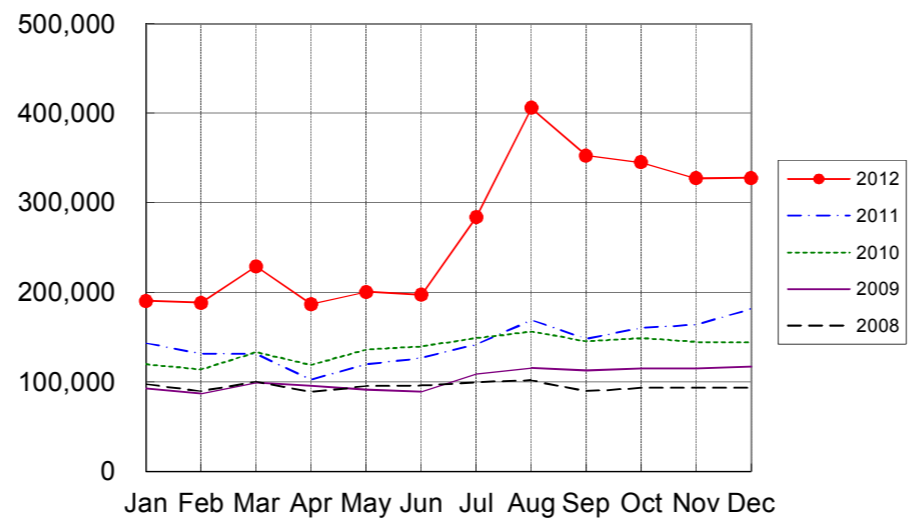
**CARGO
(International)**



**PASSENGERS
(International)**



**PASSENGERS
(Domestic)**



AVIATION FUEL SUPPLIED

