

New Connecting Corridor Replaces Shuttle System - A New Stage in Becoming the Customers' Preferred Airport



Connecting corridor (external view)

Tokyo, 13 September 2013: A new connecting corridor will open on Friday, 27 September, between the main and satellite buildings of Terminal 2 at Narita International Airport.

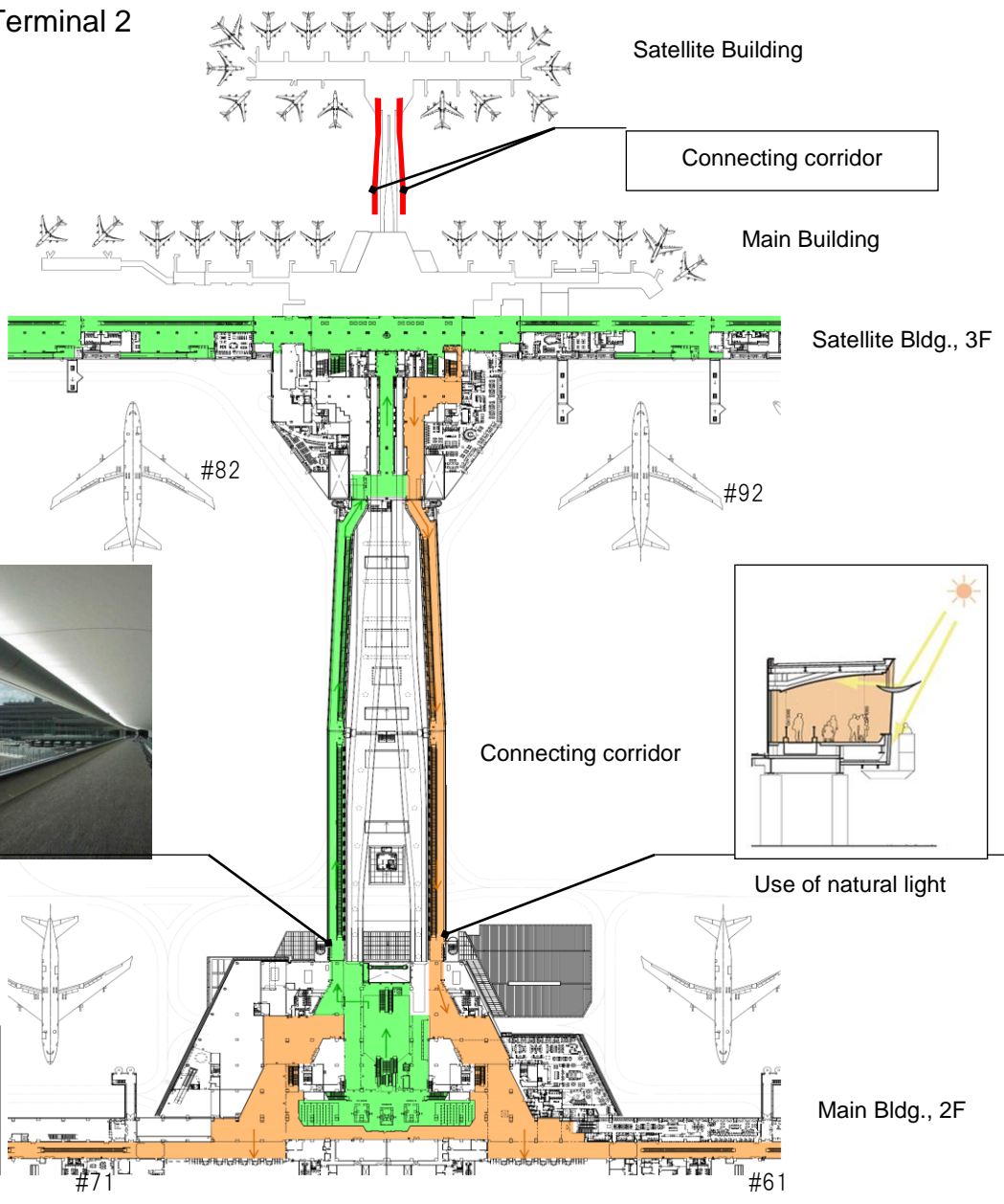
The corridor is approximately 6.5 meters wide respectively on both departure and arrival passenger flows, approximately 220 meters long, and is equipped with moving sidewalks. The use of columns and window frames has been minimized to create a spacious atmosphere, allowing travelers to enjoy a panoramic view as they move along the corridor.

The facility is designed to be friendly to environment. During the day, natural light provides adequate lighting and reduces energy requirements, while geothermal heat is used for air conditioning.

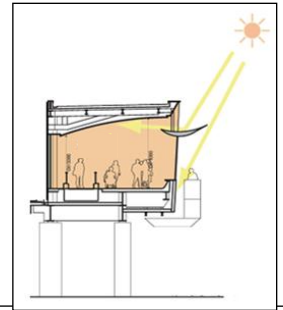
The opening of this corridor will mean that passengers will be able to travel between the main and satellite buildings without having to wait at the shuttle platforms as they did before. This will offer greater convenience to the growing number of passengers using Narita as the airport's capacity continues to expand.

In conjunction with this change, the shuttle service between the two buildings, used by customers since the opening of Terminal 2, will be terminated.

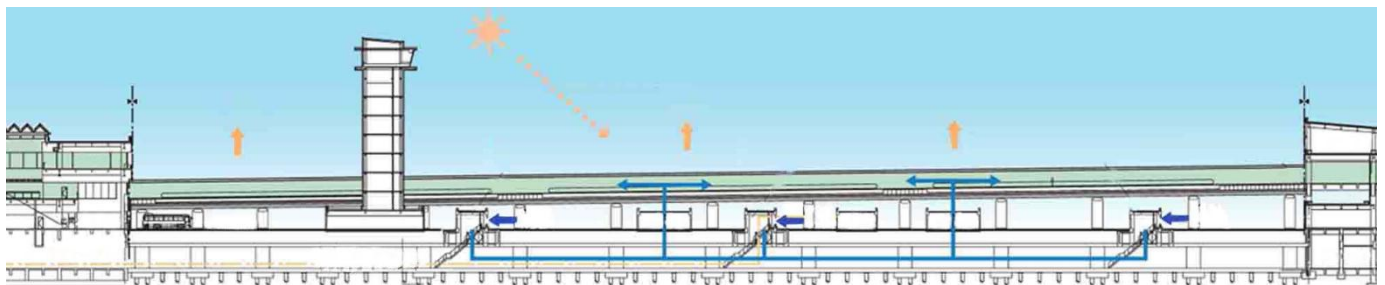
(Location diagram) Terminal 2



View from the corridor



Use of natural light



(Schematic diagram) Use of geothermal heat

NARITA INTERNATIONAL AIRPORT CORPORATION

NAA-Bldg., Narita International Airport, Narita-City, Chiba, 282-8601, Japan
 URL : <http://www.narita-airport.jp/en/>

