

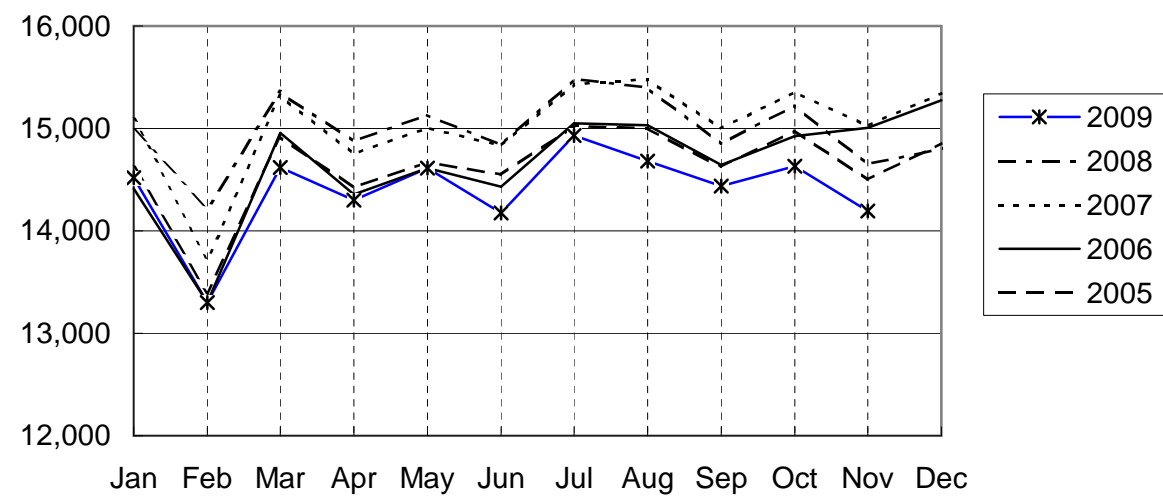
NARITA AIRPORT TRAFFIC STATISTICS -2009(JAN-DEC)

NARITA INTERNATIONAL AIRPORT CORPORATION

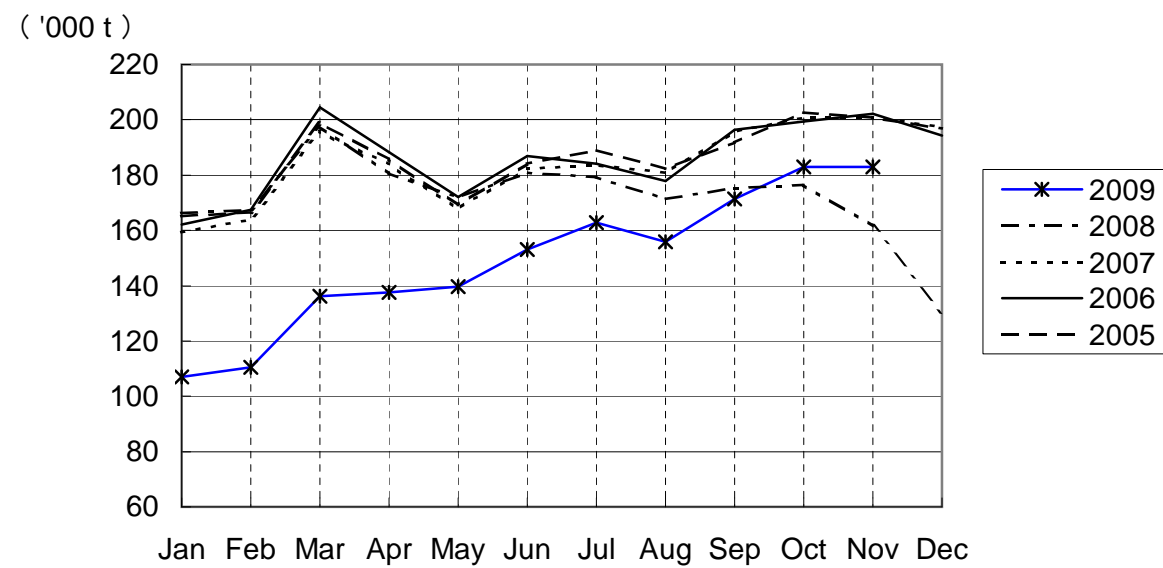
MONTH DESCRIPTION	AGGREGATE 21-May-78~ 31-Dec-08	2009												TOTAL	AVERAGE PER DAY	AGGREGATE 21-May-78 31-Dec-09
		ACTUAL														
		JAN	FEB	MAR	APR	MAY	JUN	JUL	AUG	SEP	OCT	NOV	DEC			
AIRCRAFT MOVEMENTS	3,682,907	15,714 (98)	14,316 (94)	15,814 (96)	15,455 (97)	15,838 (97)	15,341 (96)	16,132 (97)	15,870 (96)	15,584 (98)	15,854 (97)	15,556 (98)	171,474 (97)	513	3,854,381	
A Runway	3,318,589	10,568 (97)	9,721 (93)	10,475 (93)	10,443 (96)	10,714 (97)	10,449 (96)	10,984 (97)	10,868 (96)	10,628 (97)	10,824 (97)	10,660 (100)	116,334 (96)	348	3,434,923	
B'Runway	364,318	5,146 (99)	4,595 (95)	5,339 (102)	5,012 (99)	5,124 (99)	4,892 (97)	5,148 (98)	5,002 (95)	4,956 (99)	5,030 (97)	4,896 (96)	55,140 (98)	165	419,458	
International	3,482,978	14,520 (97)	13,302 (93)	14,616 (95)	14,298 (96)	14,614 (97)	14,177 (96)	14,930 (96)	14,681 (95)	14,438 (97)	14,630 (96)	14,196 (97)	158,402 (96)	474	3,641,380	
PAX Flight	2,873,834	12,732 (100)	11,340 (95)	12,462 (97)	12,272 (99)	12,690 (99)	12,168 (98)	12,804 (98)	12,825 (98)	12,388 (98)	12,493 (97)	12,133 (99)	136,307 (98)	408	3,010,141	
Cargo Flight	547,793	1,638 (79)	1,821 (89)	1,909 (80)	1,872 (83)	1,749 (84)	1,900 (85)	1,979 (87)	1,736 (84)	1,884 (91)	1,922 (90)	1,911 (88)	20,321 (86)	61	568,114	
Others	61,351	150 (88)	141 (71)	245 (148)	154 (73)	175 (78)	109 (62)	147 (91)	120 (60)	166 (92)	215 (104)	152 (90)	1,774 (86)	5	63,125	
Domestic	199,929	1,194 (105)	1,014 (99)	1,198 (108)	1,157 (107)	1,224 (108)	1,164 (104)	1,202 (105)	1,189 (104)	1,146 (104)	1,224 (106)	1,360 (118)	13,072 (106)	39	213,001	
PAX Flight	185,003	1,168 (108)	994 (100)	1,170 (108)	1,140 (107)	1,177 (107)	1,138 (106)	1,175 (106)	1,166 (104)	1,127 (104)	1,183 (106)	1,321 (116)	12,759 (107)	38	197,762	
Others	14,926	26 (46)	20 (59)	28 (104)	17 (68)	47 (121)	26 (63)	27 (84)	23 (96)	19 (79)	41 (100)	39 (325)	313 (88)	1	15,239	
TERMINAL PASSENGERS	702,727,564	2,614,589 (90)	2,412,112 (88)	2,737,330 (91)	2,560,726 (96)	2,360,115 (87)	2,351,690 (85)	2,878,640 (97)	3,110,137 (102)	2,916,168 (106)	2,833,831 (101)	2,657,743 (104)	29,433,081 (95)	88,123	732,160,645	
International	678,317,616	2,521,451 (90)	2,325,227 (88)	2,637,783 (91)	2,464,788 (96)	2,268,741 (86)	2,262,286 (84)	2,769,614 (97)	2,994,284 (101)	2,803,131 (105)	2,719,106 (101)	2,543,106 (104)	28,309,517 (95)	84,759	706,627,133	
Japanese	393,056,712	1,287,081 (87)	1,369,477 (94)	1,522,865 (93)	1,237,869 (97)	1,145,033 (83)	1,064,023 (76)	1,359,567 (93)	1,631,720 (98)	1,741,128 (111)	1,464,384 (102)	1,363,014 (101)	15,186,161 (94)	45,468	408,242,873	
Non-Japanese	150,540,012	668,696 (90)	525,728 (71)	662,766 (83)	753,089 (90)	578,570 (79)	542,941 (75)	726,735 (84)	778,002 (98)	626,395 (94)	742,996 (97)	667,838 (103)	7,273,756 (88)	21,778	157,813,768	
Transit	134,720,892	565,674 (99)	430,022 (98)	452,152 (93)	473,830 (101)	545,138 (104)	655,322 (119)	683,312 (125)	584,562 (117)	435,608 (103)	511,726 (102)	512,254 (112)	5,849,600 (107)	17,514	140,570,492	
Domestic	24,409,948	93,138 (95)	86,885 (97)	99,547 (99)	95,938 (107)	91,374 (96)	89,404 (93)	109,026 (109)	115,853 (114)	113,037 (126)	114,725 (122)	114,637 (122)	1,123,564 (107)	3,364	25,533,512	
CARGO (t)	42,338,751	106,907 (64)	110,445 (66)	136,229 (69)	137,604 (76)	139,566 (81)	153,141 (85)	162,885 (91)	155,841 (91)	171,370 (98)	182,917 (104)	182,920 (113)	1,639,825 (85)	4,910	43,978,576	
Loaded	19,787,894	44,171 (53)	45,234 (54)	56,777 (60)	61,622 (70)	64,123 (74)	71,811 (79)	76,314 (85)	72,445 (86)	81,901 (95)	88,963 (105)	86,164 (120)	749,525 (79)	2,244	20,537,419	
Export	14,440,848	30,563 (47)	32,223 (48)	36,996 (52)	43,100 (64)	43,955 (67)	48,577 (71)	52,008 (79)	50,699 (83)	59,731 (94)	66,286 (105)	61,499 (119)	525,637 (74)	1,574	14,966,485	
Transit	5,347,046	13,608 (74)	13,011 (76)	19,781 (83)	18,522 (86)	20,168 (99)	23,234 (101)	24,306 (103)	21,746 (94)	22,170 (97)	22,677 (106)	24,665 (123)	223,888 (95)	670	5,570,934	
Unloaded	22,550,857	62,736 (76)	65,211 (78)	79,452 (77)	75,982 (83)	75,443 (88)	81,330 (91)	86,571 (96)	83,396 (96)	89,469 (101)	93,954 (102)	96,756 (108)	890,300 (90)	2,666	23,441,157	
Import	17,328,275	50,102 (76)	52,505 (78)	60,687 (76)	58,139 (81)	55,926 (84)	59,103 (86)	62,941 (93)	62,202 (95)	68,245 (100)	71,499 (99)	73,794 (104)	675,143 (88)	2,021	18,003,418	
Transit	5,222,582	12,634 (73)	12,706 (78)	18,765 (83)	17,843 (90)	19,517 (101)	22,227 (104)	23,630 (107)	21,194 (97)	21,224 (103)	22,455 (114)	22,962 (122)	215,157 (98)	644	5,437,739	
FUEL SUPPLIED TO AIRCRAFT (kl)	129,139,747	424,570 (91)	380,320 (86)	410,844 (88)	396,603 (90)	393,841 (88)	393,839 (88)	412,907 (89)	412,339 (89)	401,630 (92)	405,284 (91)	394,476 (93)	4,426,653 (90)	13,253	133,566,400	

NOTE : ()% ; Changes from the same month of previous year.

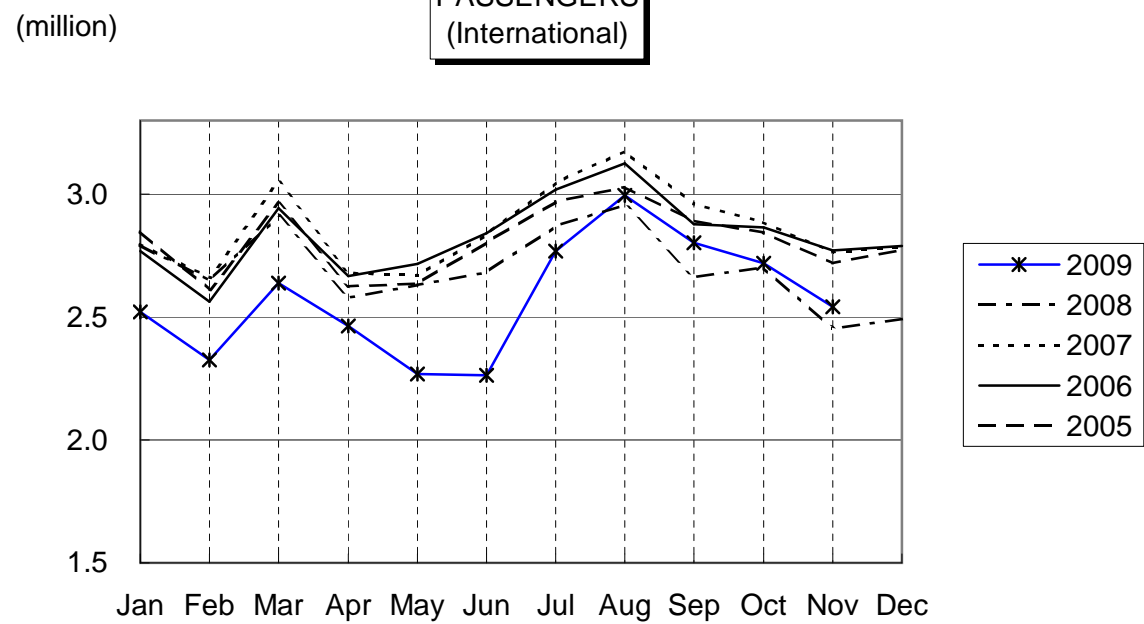
AIRCRAFT MOVEMENTS
(International)



CARGO
(International)



PASSENGERS
(International)



AVIATION FUEL SUPPLIED

