

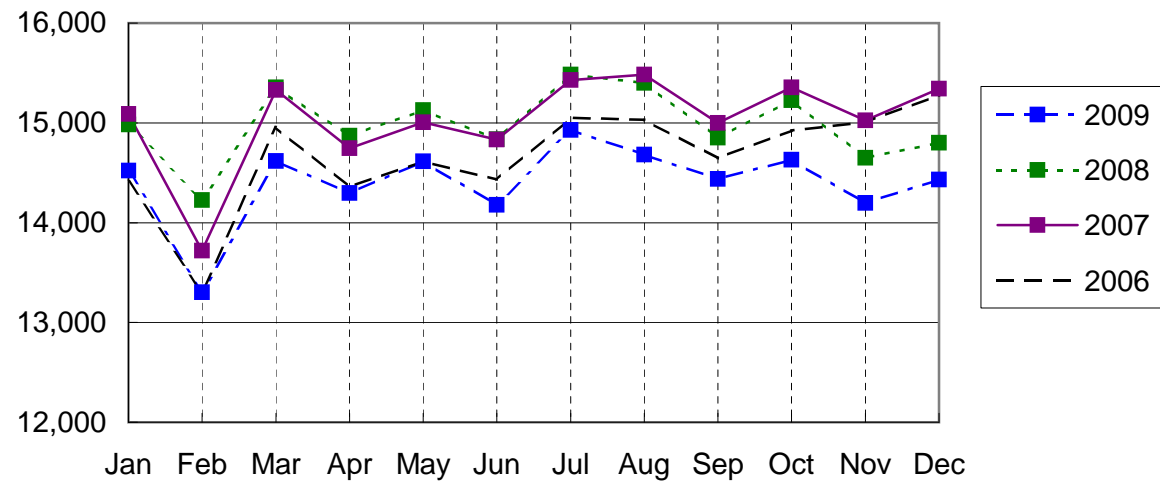
NARITA AIRPORT TRAFFIC STATISTICS -2009(JAN-DEC)

NARITA INTERNATIONAL AIRPORT CORPORATION

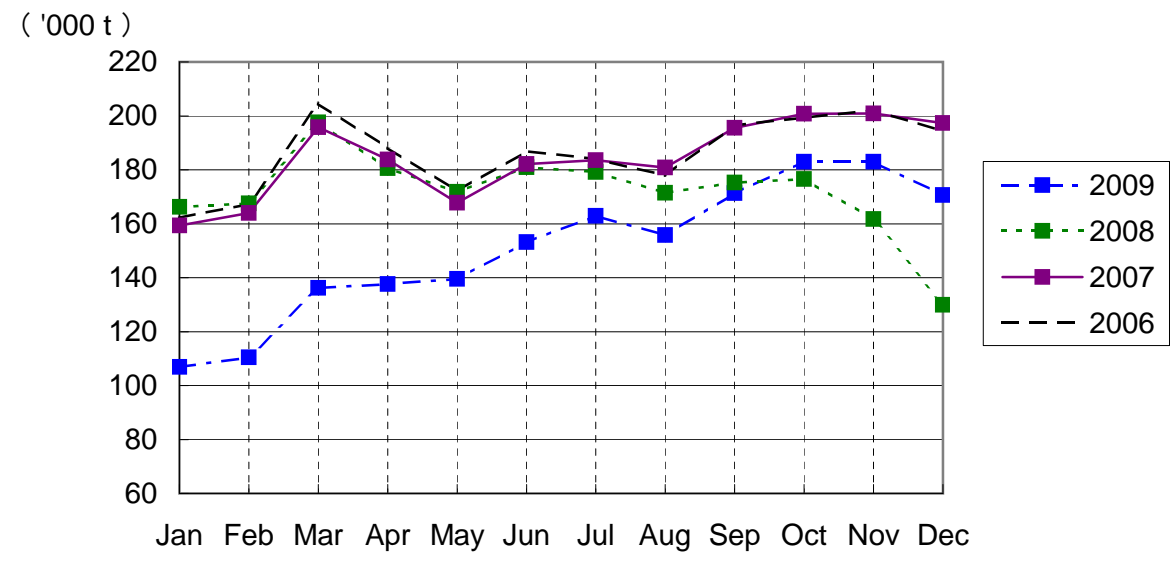
MONTH DESCRIPTION	AGGREGATE 21-May-78~ 31-Dec-08	2009												TOTAL	AVERAGE PER DAY	AGGREGATE 21-May-78 31-Dec-09
		ACTUAL										PROV.				
		JAN	FEB	MAR	APR	MAY	JUN	JUL	AUG	SEP	OCT	NOV	DEC			
<b>AIRCRAFT MOVEMENTS</b>	3,682,907	15,714	14,316	15,814	15,455	15,838	15,341	16,132	15,870	15,584	15,854	15,556	15,813	187,287	513	3,870,194
A Runway	3,318,589	(98) 10,568	(94) 9,721	(96) 10,475	(97) 10,443	(97) 10,714	(96) 10,449	(97) 10,984	(96) 10,868	(98) 10,628	(97) 10,824	(98) 10,660	(99) 10,762	(97) 127,096	348	3,445,685
B'Runway	364,318	(97) 5,146	(93) 4,595	(93) 5,339	(96) 5,012	(97) 5,124	(96) 4,892	(97) 5,148	(96) 5,002	(97) 4,956	(97) 5,030	(100) 4,896	(100) 5,051	(97) 60,191	165	424,509
International	3,482,978	(99) 14,520	(95) 13,302	(102) 14,616	(99) 14,298	(99) 14,614	(97) 14,177	(96) 14,930	(95) 14,681	(97) 14,438	(96) 14,630	(97) 14,196	(98) 14,431	(96) 172,833	474	3,655,811
PAX Flight	2,873,834	(97) 12,732	(93) 11,340	(95) 12,462	(96) 12,272	(97) 12,690	(96) 12,168	(96) 12,804	(95) 12,825	(97) 12,388	(96) 12,493	(97) 12,133	(98) 12,361	(96) 148,668	407	3,022,502
Cargo Flight	547,793	(99) 1,638	(95) 1,821	(97) 1,909	(99) 1,872	(99) 1,749	(98) 1,900	(98) 1,979	(98) 1,736	(97) 1,884	(97) 1,922	(99) 1,911	(98) 1,888	(98) 22,209	61	570,002
Others	61,351	(79) 150	(89) 141	(80) 245	(83) 154	(84) 175	(85) 109	(87) 147	(84) 120	(91) 166	(90) 215	(88) 152	(94) 182	(86) 1,956	5	63,307
Domestic	199,929	(88) 1,194	(71) 1,014	(148) 1,198	(73) 1,157	(78) 1,224	(62) 1,164	(91) 1,202	(60) 1,189	(92) 1,146	(104) 1,224	(90) 1,360	(114) 1,382	(88) 14,454	40	214,383
PAX Flight	185,003	(105) 1,168	(99) 994	(108) 1,170	(107) 1,140	(108) 1,177	(104) 1,138	(105) 1,175	(104) 1,166	(104) 1,127	(106) 1,183	(118) 1,321	(115) 1,354	(107) 14,113	39	199,116
Others	14,926	(108) 26	(100) 20	(108) 28	(107) 17	(107) 47	(106) 26	(106) 27	(104) 23	(104) 19	(106) 41	(116) 39	(116) 28	(108) 341	1	15,267
TERMINAL PASSENGERS	702,727,564	(46) 2,614,589	(59) 2,412,112	(104) 2,737,330	(68) 2,560,726	(121) 2,360,115	(63) 2,351,690	(84) 2,878,640	(96) 3,110,137	(79) 2,916,168	(100) 2,833,831	(325) 2,657,743	(82) 2,775,100	(88) 32,208,181	88,242	734,935,745
International	678,317,616	(90) 2,521,451	(88) 2,325,227	(91) 2,637,783	(96) 2,464,788	(87) 2,268,741	(85) 2,262,286	(97) 2,769,614	(102) 2,994,284	(106) 2,803,131	(101) 2,719,106	(104) 2,543,106	(107) 2,658,004	(96) 30,967,521	84,843	709,285,137
Japanese	393,056,712	(90) 1,287,081	(88) 1,369,477	(91) 1,522,865	(96) 1,237,869	(86) 1,145,033	(84) 1,064,023	(97) 1,359,567	(101) 1,631,720	(105) 1,741,128	(101) 1,464,384	(104) 1,363,014	(107) 1,341,603	(96) 16,527,764	45,282	409,584,476
Non-Japanese	150,540,012	(87) 668,696	(94) 525,728	(93) 662,766	(97) 753,089	(83) 578,570	(76) 542,941	(93) 726,735	(98) 778,002	(111) 626,395	(102) 742,996	(101) 667,838	(103) 722,591	(95) 7,996,347	21,908	158,536,359
Transit	134,720,892	(90) 565,674	(71) 430,022	(83) 452,152	(90) 473,830	(79) 545,138	(75) 655,322	(84) 683,312	(98) 584,562	(94) 435,608	(97) 511,726	(103) 512,254	(109) 593,810	(89) 6,443,410	17,653	141,164,302
Domestic	24,409,948	(99) 93,138	(98) 86,885	(93) 99,547	(101) 95,938	(104) 91,374	(119) 89,404	(125) 109,026	(117) 115,853	(103) 113,037	(102) 114,725	(112) 114,637	(114) 117,096	(107) 1,240,660	3,399	25,650,608
CARGO ( t )	42,338,751	(95) 106,907	(97) 110,445	(99) 136,229	(107) 137,604	(96) 139,566	(93) 153,141	(109) 162,885	(114) 155,841	(126) 171,370	(122) 182,917	(122) 182,920	(125) 170,623	(109) 1,810,448	4,960	44,149,199
Loaded	19,787,894	(64) 44,171	(66) 45,234	(69) 56,777	(76) 61,622	(81) 64,123	(85) 71,811	(91) 76,314	(91) 72,445	(98) 81,901	(104) 88,963	(113) 86,164	(131) 79,919	(88) 829,444	2,272	20,617,338
Export	14,440,848	(53) 30,563	(54) 32,223	(60) 36,996	(70) 43,100	(74) 43,955	(79) 48,577	(85) 52,008	(86) 50,699	(95) 59,731	(105) 66,286	(120) 61,499	(146) 61,556	(83) 587,193	1,609	15,028,041
Transit	5,347,046	(47) 13,608	(48) 13,011	(52) 19,781	(64) 18,522	(67) 20,168	(71) 23,234	(79) 24,306	(83) 21,746	(94) 22,170	(105) 22,677	(119) 24,665	(152) 18,363	(78) 242,251	664	5,589,297
Unloaded	22,550,857	(74) 62,736	(76) 65,211	(83) 79,452	(86) 75,982	(99) 75,443	(101) 81,330	(103) 86,571	(94) 83,396	(97) 89,469	(106) 93,954	(123) 96,756	(129) 90,704	(97) 981,004	2,688	23,531,861
Import	17,328,275	(76) 50,102	(78) 52,505	(76) 60,687	(81) 58,139	(84) 55,926	(86) 59,103	(93) 62,941	(95) 62,202	(100) 68,245	(99) 71,499	(104) 73,794	(117) 72,785	(91) 747,928	2,049	18,076,203
Transit	5,222,582	(73) 12,634	(78) 12,706	(83) 18,765	(90) 17,843	(101) 19,517	(104) 22,227	(107) 23,630	(97) 21,194	(103) 21,224	(114) 22,455	(122) 22,962	(135) 17,919	(100) 233,076	639	5,455,658
FUEL SUPPLIED TO AIRCRAFT ( kl )	129,139,747	(91) 424,570	(86) 380,320	(88) 410,844	(90) 396,603	(88) 393,841	(88) 393,839	(89) 412,907	(89) 412,339	(92) 401,630	(91) 405,284	(93) 394,476	(94) 405,552	(90) 4,832,205	13,239	133,971,952

NOTE : ( )% ; Changes from the same month of previous year.

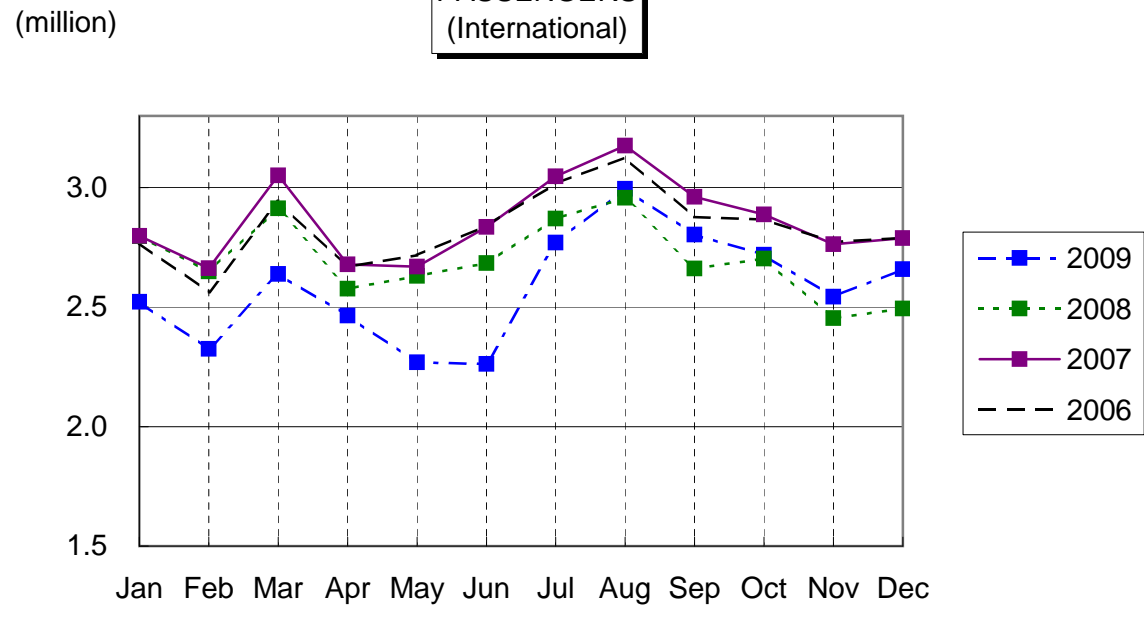
**AIRCRAFT MOVEMENTS**  
(International)



**CARGO**  
(International)



**PASSENGERS**  
(International)



**AVIATION FUEL SUPPLIED**

