

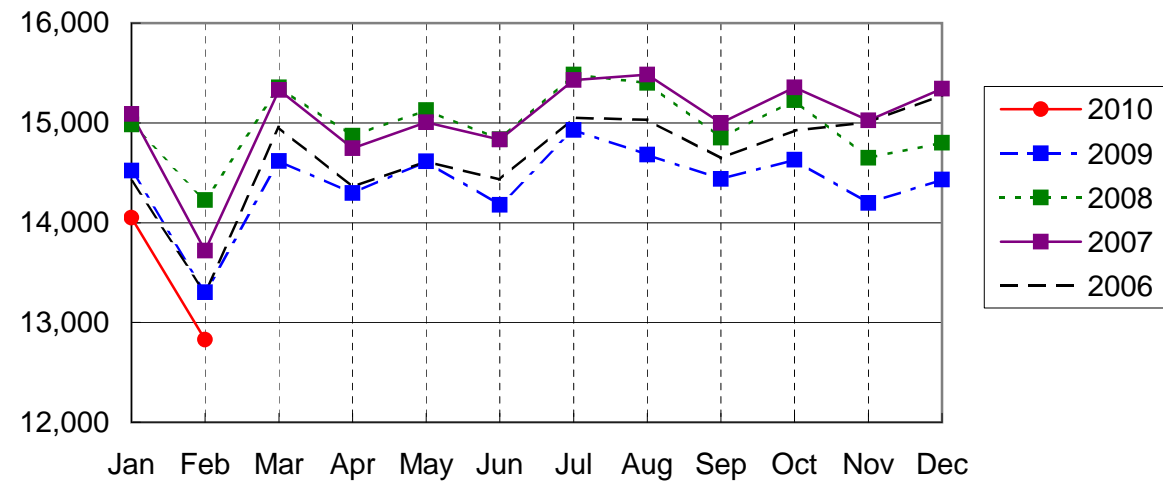
NARITA AIRPORT TRAFFIC STATISTICS -2010(JAN-DEC)

NARITA INTERNATIONAL AIRPORT CORPORATION

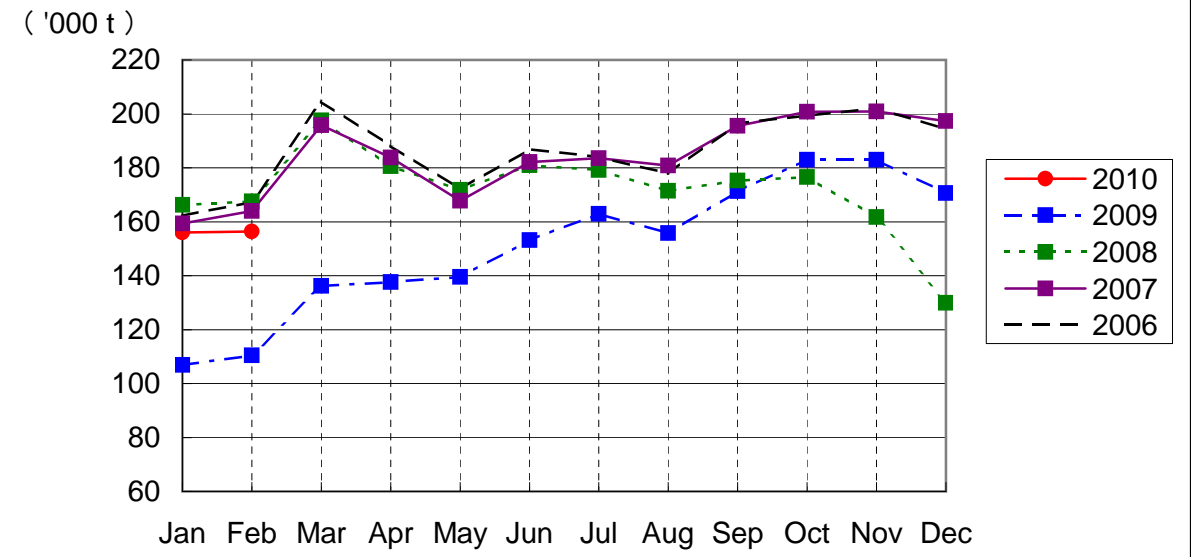
MONTH DESCRIPTION	AGGREGATE 21-May-78~ 31-Dec-09	2010												TOTAL	AVERAGE PER DAY	AGGREGATE 21-May-78 31-Dec-10
		PROV.		MAR	APR	MAY	JUN	JUL	AUG	SEP	OCT	NOV	DEC			
		JAN	FEB													
<b>AIRCRAFT MOVEMENTS</b>	3,870,194	15,499	14,153											29,652	503	3,899,846
A Runway	3,445,685	(99) 10,481	(99) 9,666											(99) 20,147	341	3,465,832
B'Runway	424,509	(99) 5,018	(99) 4,487											(99) 9,505	161	434,014
International	3,655,811	(98) 14,051	(98) 12,826											(98) 26,877	456	3,682,688
PAX Flight	3,022,502	(97) 12,327	(96) 11,117											(97) 23,444	397	3,045,946
Cargo Flight	570,002	(97) 1,561	(98) 1,508											(97) 3,069	52	573,071
Others	63,307	(83) 163	(89) 201											(89) 364	6	63,671
Domestic	214,383	(109) 1,448	(143) 1,327											(125) 2,775	47	217,158
PAX Flight	199,116	(121) 1,420	(131) 1,285											(126) 2,705	46	201,821
Others	15,267	(122) 28	(129) 42											(125) 70	1	15,337
		(108) (210)	(152) (210)											(152)		
<b>TERMINAL PASSENGERS</b>	734,935,745	2,738,930	2,605,018											5,343,948	90,575	740,279,693
International	709,285,137	(105) 2,618,871	(108) 2,490,827											(106) 5,109,698	86,605	714,394,835
Japanese	409,584,476	(104) 1,342,737	(107) 1,329,667											(105) 2,672,404	45,295	412,256,880
Non-Japanese	158,536,359	(101) 668,568	(97) 684,082											(101) 1,352,650	22,926	159,889,009
Transit	141,164,302	(113) 607,566	(113) 477,078											(113) 1,084,644	18,384	142,248,946
Domestic	25,650,608	(109) 120,059	(111) 114,191											(109) 234,250	3,970	25,884,858
		(129) (131)	(130) (131)											(130)		
<b>CARGO ( t )</b>	44,149,199	156,057	156,392											312,449	5,296	44,461,648
Loaded	20,617,338	(146) 73,940	(142) 73,896											(144) 147,836	2,506	20,765,174
Export	15,028,041	(167) 55,570	(163) 56,311											(165) 111,881	1,896	15,139,922
Transit	5,589,297	(182) 18,370	(175) 17,585											(178) 35,955	609	5,625,252
Unloaded	23,531,861	(135) 82,117	(135) 82,496											(135) 164,613	2,790	23,696,474
Import	18,076,203	(131) 63,926	(127) 65,692											(129) 129,618	2,197	18,205,821
Transit	5,455,658	(128) 18,191	(125) 16,804											(126) 34,995	593	5,490,653
		(144) (132)	(138) (132)											(138)		
<b>FUEL SUPPLIED TO AIRCRAFT ( kl )</b>	133,971,952	398,466	363,028											761,494	12,907	134,733,446
		(94) (94)	(95) (95)											(95)		

NOTE : ( )% ; Changes from the same month of previous year.

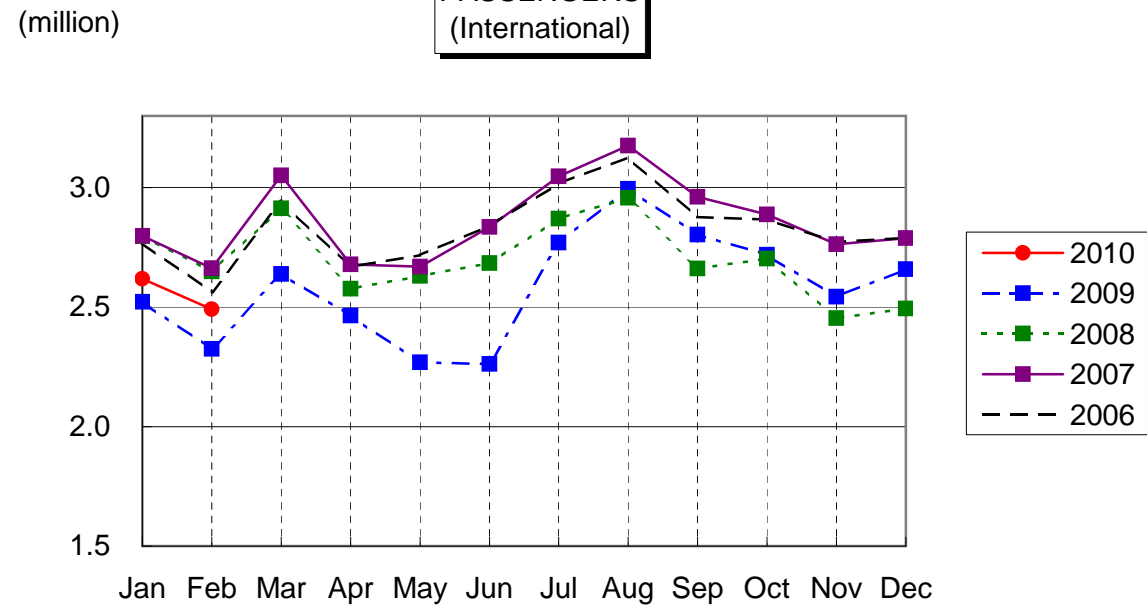
**AIRCRAFT MOVEMENTS**  
(International)



**CARGO**  
(International)



**PASSENGERS**  
(International)



**AVIATION FUEL SUPPLIED**

