

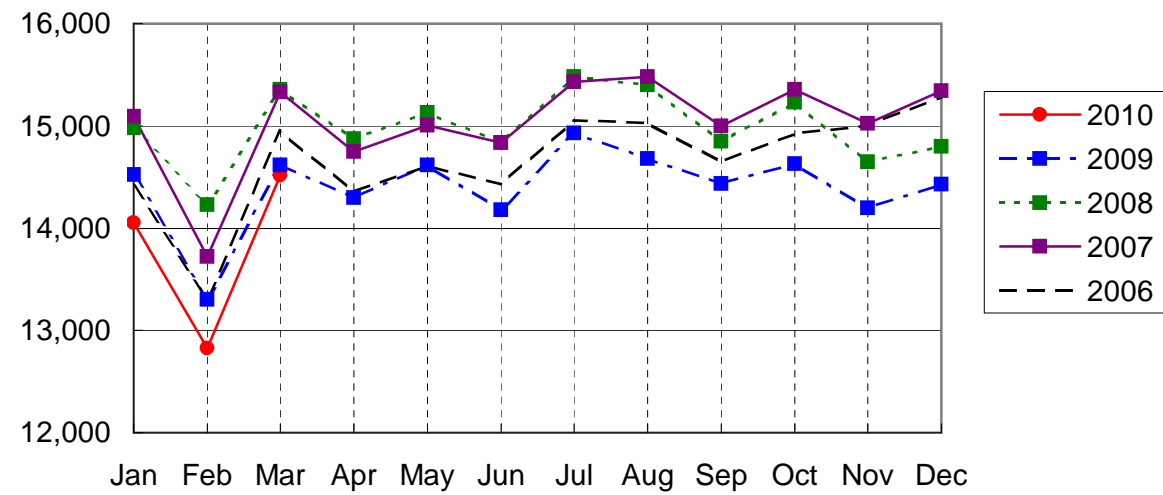
NARITA AIRPORT TRAFFIC STATISTICS -2010(JAN-DEC)

NARITA INTERNATIONAL AIRPORT CORPORATION

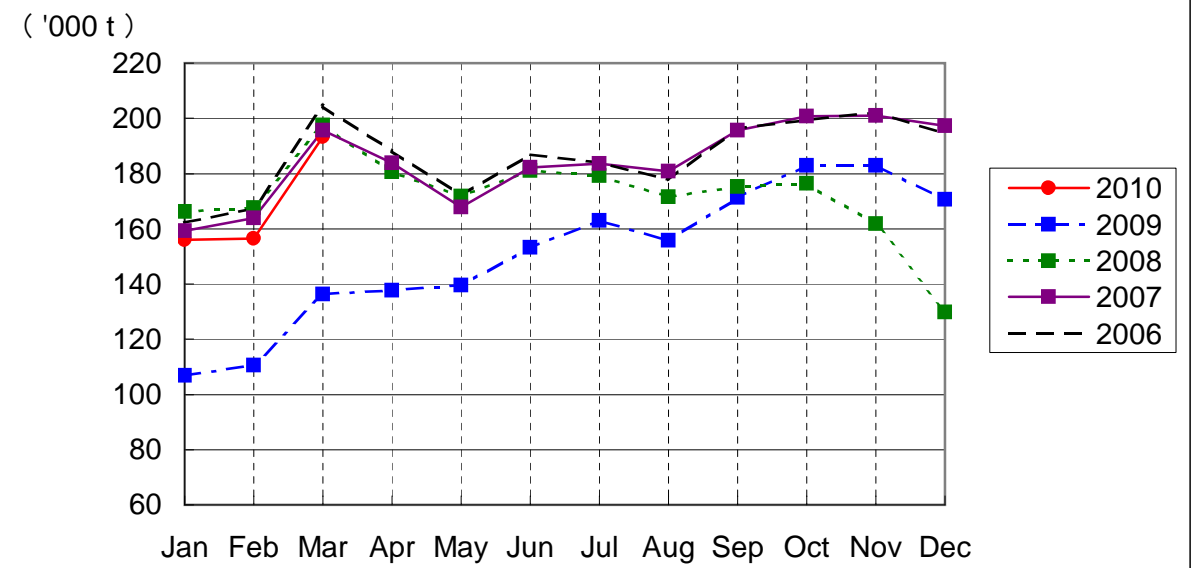
MONTH DESCRIPTION	AGGREGATE 21-May-78~ 31-Dec-09	2010												TOTAL	AVERAGE PER DAY	AGGREGATE 21-May-78 31-Dec-10
		ACTUAL		PROV.	APR	MAY	JUN	JUL	AUG	SEP	OCT	NOV	DEC			
		JAN	FEB	MAR												
AIRCRAFT MOVEMENTS	3,870,194	15,499	14,153	15,956										45,608	507	3,915,802
		(99)	(99)	(101)										(99)		
A Runway	3,445,685	10,481	9,665	10,819										30,965	344	3,476,650
		(99)	(99)	(103)										(101)		
B'Runway	424,509	5,018	4,488	5,137										14,643	163	439,152
		(98)	(98)	(96)										(97)		
International	3,655,811	14,051	12,826	14,516										41,393	460	3,697,204
		(97)	(96)	(99)										(98)		
PAX Flight	3,022,502	12,327	11,117	12,413										35,857	398	3,058,359
		(97)	(98)	(100)										(98)		
Cargo Flight	570,002	1,561	1,508	1,906										4,975	55	574,977
		(95)	(83)	(100)										(93)		
Others	63,307	163	201	197										561	6	63,868
		(109)	(143)	(80)										(105)		
Domestic	214,383	1,448	1,327	1,440										4,215	47	218,598
		(121)	(131)	(120)										(124)		
PAX Flight	199,116	1,420	1,285	1,419										4,124	46	203,240
		(122)	(129)	(121)										(124)		
Others	15,267	28	42	21										91	1	15,358
		(108)	(210)	(75)										(123)		
TERMINAL PASSENGERS	734,935,745	2,738,930	2,605,018	3,059,355										8,403,303	93,370	743,339,048
		(105)	(108)	(112)										(108)		
International	709,285,137	2,618,871	2,490,827	2,925,748										8,035,446	89,283	717,320,583
		(104)	(107)	(111)										(107)		
Japanese	409,584,476	1,342,737	1,329,667	1,674,844										4,347,248	48,303	413,931,724
		(104)	(97)	(110)										(104)		
Non-Japanese	158,536,359	668,568	684,082	751,922										2,104,572	23,384	160,640,931
		(100)	(130)	(113)										(113)		
Transit	141,164,302	607,566	477,078	498,982										1,583,626	17,596	142,747,928
		(107)	(111)	(110)										(109)		
Domestic	25,650,608	120,059	114,191	133,607										367,857	4,087	26,018,465
		(129)	(131)	(134)										(132)		
CARGO (t)	44,149,199	156,057	156,392	193,284										505,733	5,619	44,654,932
		(146)	(142)	(142)										(143)		
Loaded	20,617,338	73,940	73,896	88,296										236,132	2,624	20,853,470
		(167)	(163)	(156)										(162)		
Export	15,028,041	55,570	56,311	66,682										178,563	1,984	15,206,604
		(182)	(175)	(180)										(179)		
Transit	5,589,297	18,370	17,585	21,614										57,569	640	5,646,866
		(135)	(135)	(109)										(124)		
Unloaded	23,531,861	82,117	82,496	104,988										269,601	2,996	23,801,462
		(131)	(127)	(132)										(130)		
Import	18,076,203	63,926	65,692	84,219										213,837	2,376	18,290,040
		(128)	(125)	(139)										(131)		
Transit	5,455,658	18,191	16,804	20,769										55,764	620	5,511,422
		(144)	(132)	(111)										(126)		
FUEL SUPPLIED TO AIRCRAFT (kl)	133,971,952	398,466	363,028	405,495										1,166,989	12,967	135,138,941
		(94)	(95)	(99)										(96)		

NOTE : ()% ; Changes from the same month of previous year.

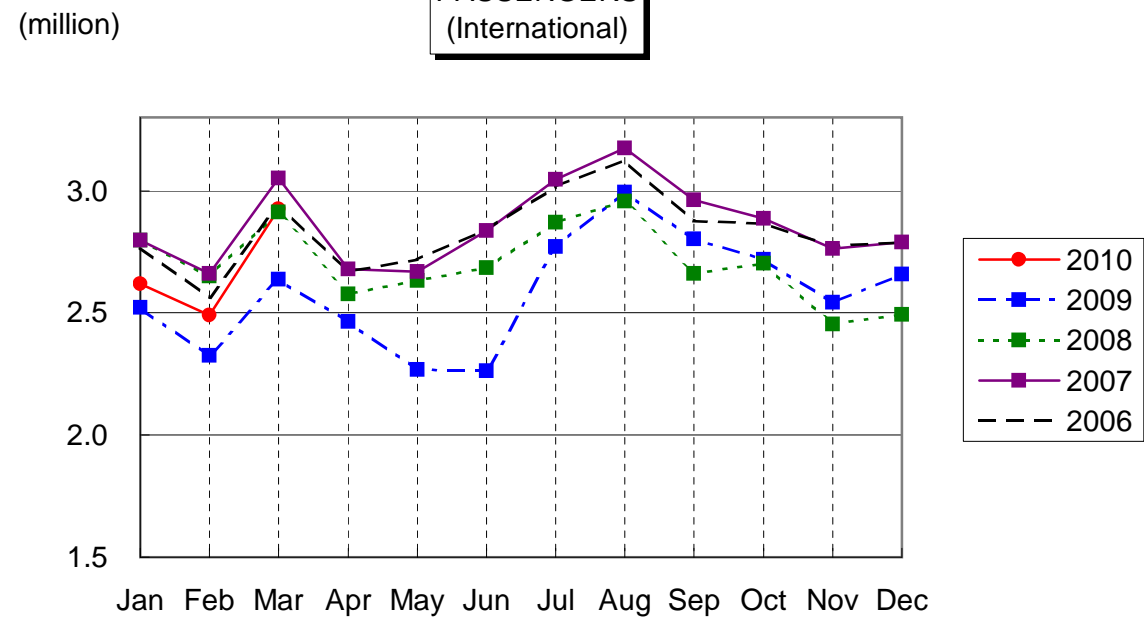
AIRCRAFT MOVEMENTS
(International)



CARGO
(International)



PASSENGERS
(International)



AVIATION FUEL SUPPLIED

