

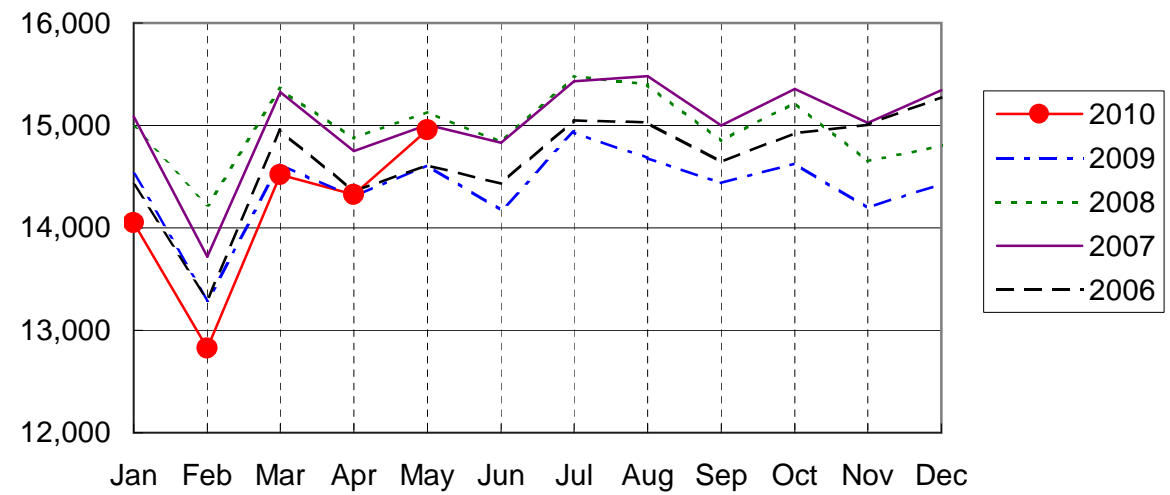
NARITA AIRPORT TRAFFIC STATISTICS -2010(JAN-DEC)

NARITA INTERNATIONAL AIRPORT CORPORATION

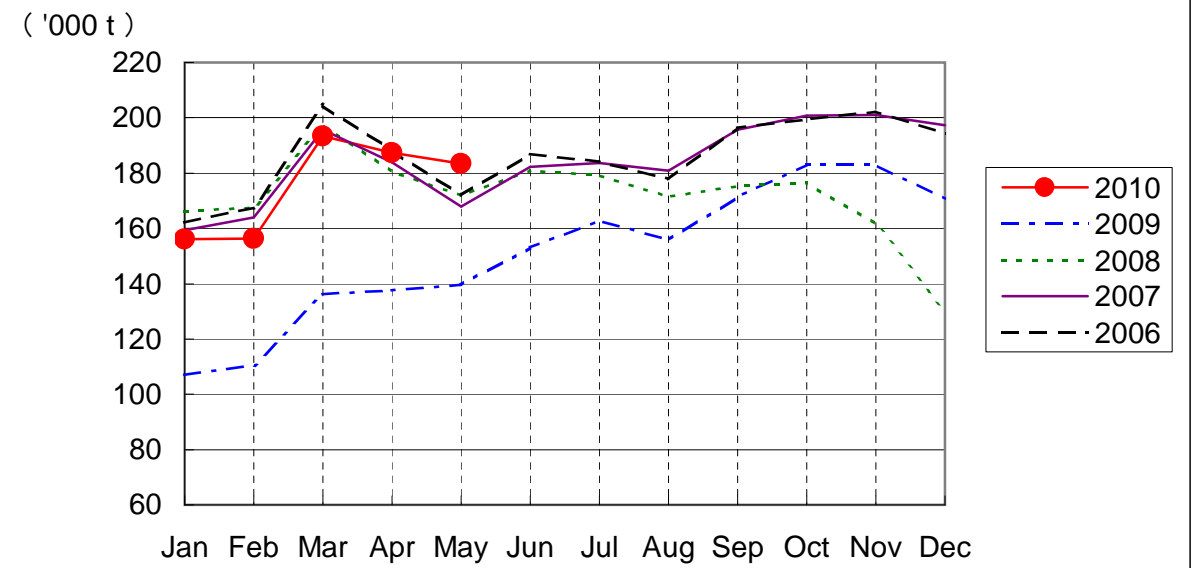
MONTH DESCRIPTION	AGGREGATE 21-May-78~ 31-Dec-09	2010												AGGREGATE 21-May-78 31-Dec-10		
		ACTUAL			PROV.		JUN	JUL	AUG	SEP	OCT	NOV	DEC		TOTAL	AVERAGE PER DAY
		JAN	FEB	MAR	APR	MAY										
<b>AIRCRAFT MOVEMENTS</b>	3,870,194	15,499	14,153	15,956	15,775	16,478								77,861	516	3,948,055
		(99)	(99)	(101)	(102)	(104)								(101)		
International	3,655,811	14,051	12,826	14,516	14,327	14,957								70,677	468	3,726,488
		(97)	(96)	(99)	(100)	(102)								(99)		
PAX Flight	3,022,502	12,327	11,117	12,413	12,173	12,899								60,929	404	3,083,431
		(97)	(98)	(100)	(99)	(102)								(99)		
Cargo Flight	570,002	1,561	1,508	1,906	1,939	1,866								8,780	58	578,782
		(95)	(83)	(100)	(104)	(107)								(98)		
Others	63,307	163	201	197	215	192								968	6	64,275
		(109)	(143)	(80)	(140)	(110)								(112)		
Domestic	214,383	1,448	1,327	1,440	1,448	1,521								7,184	48	221,567
		(121)	(131)	(120)	(125)	(124)								(124)		
PAX Flight	199,116	1,420	1,285	1,419	1,432	1,485								7,041	47	206,157
		(122)	(129)	(121)	(126)	(126)								(125)		
Others	15,267	28	42	21	16	36								143	1	15,410
		(108)	(210)	(75)	(94)	(77)								(104)		
<b>TERMINAL PASSENGERS</b>	734,935,745	2,738,930	2,605,018	3,059,355	2,684,465	2,803,518								13,891,286	91,995	748,827,031
		(105)	(108)	(112)	(105)	(119)								(110)		
International	709,285,137	2,618,871	2,490,827	2,925,748	2,564,933	2,667,468								13,267,847	87,867	722,552,984
		(104)	(107)	(111)	(104)	(118)								(109)		
Japanese	409,584,476	1,342,737	1,329,667	1,674,844	1,218,687	1,366,657								6,932,592	45,911	416,517,068
		(104)	(97)	(110)	(98)	(119)								(106)		
Non-Japanese	158,536,359	668,568	684,082	751,922	858,618	719,887								3,683,077	24,391	162,219,436
		(100)	(130)	(113)	(114)	(124)								(115)		
Transit	141,164,302	607,566	477,078	498,982	487,628	580,924								2,652,178	17,564	143,816,480
		(107)	(111)	(110)	(103)	(107)								(108)		
Domestic	25,650,608	120,059	114,191	133,607	119,532	136,050								623,439	4,129	26,274,047
		(129)	(131)	(134)	(125)	(149)								(134)		
<b>CARGO ( t )</b>	44,149,199	156,057	156,392	193,284	187,364	183,356								876,453	5,831	45,029,660
		(146)	(142)	(142)	(136)	(131)								(139)		
Loaded	20,617,338	73,940	73,896	88,296	87,458	88,623								412,213	2,730	21,029,551
		(167)	(163)	(156)	(142)	(138)								(152)		
Export	15,028,041	55,570	56,311	66,682	66,110	66,665								311,338	2,062	15,339,379
		(182)	(175)	(180)	(153)	(152)								(167)		
Transit	5,589,297	18,370	17,585	21,614	21,348	21,958								100,875	668	5,690,172
		(135)	(135)	(109)	(115)	(109)								(119)		
Unloaded	23,531,861	82,117	82,496	104,988	99,906	94,733								464,240	3,074	23,996,101
		(131)	(127)	(132)	(131)	(126)								(129)		
Import	18,076,203	63,926	65,692	84,219	79,386	74,177								367,400	2,433	18,443,603
		(128)	(125)	(139)	(137)	(133)								(132)		
Transit	5,455,658	18,191	16,804	20,769	20,520	20,556								96,840	641	5,552,498
		(144)	(132)	(111)	(115)	(105)								(119)		
<b>FUEL SUPPLIED TO AIRCRAFT ( kl )</b>	133,971,952	398,466	363,028	405,495	392,119	411,839								1,970,947	13,053	135,942,899
		(94)	(95)	(99)	(99)	(105)								(98)		

NOTE : ( )% ; Changes from the same month of previous year.

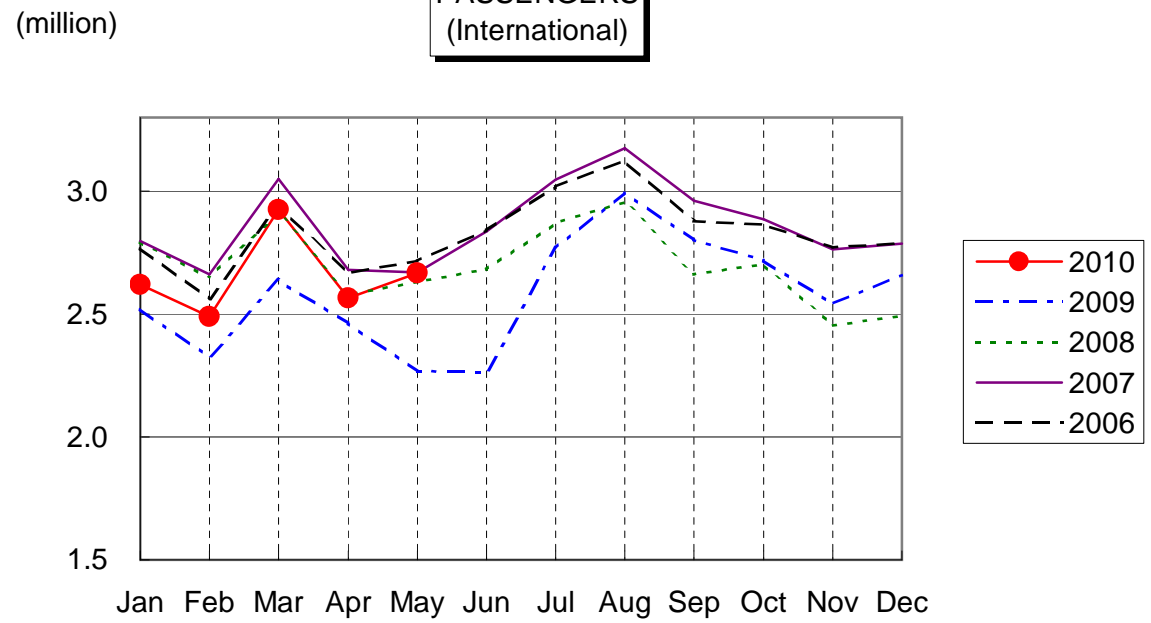
**AIRCRAFT MOVEMENTS**  
(International)



**CARGO**  
(International)



**PASSENGERS**  
(International)



**AVIATION FUEL SUPPLIED**

