

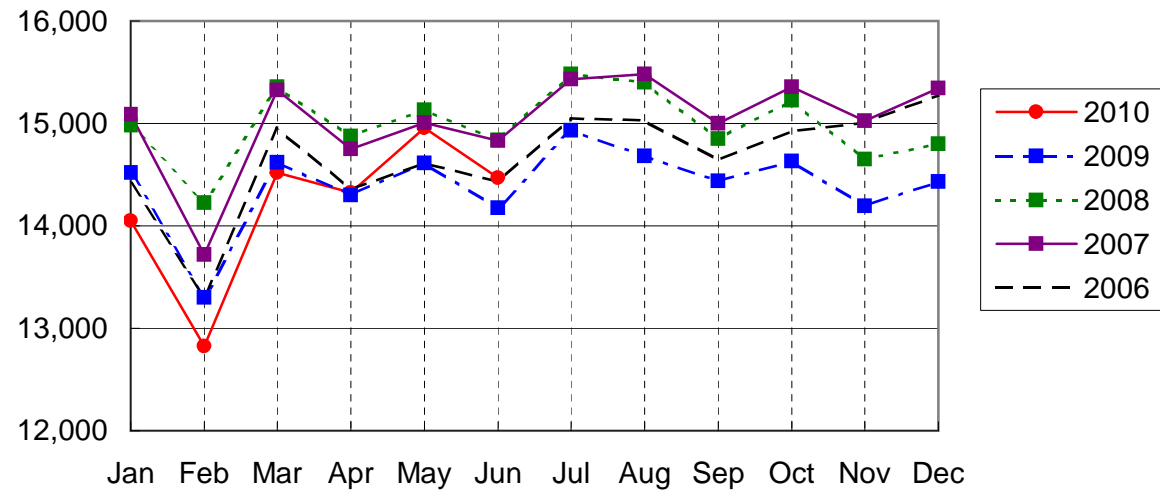
NARITA AIRPORT TRAFFIC STATISTICS -2010(JAN-DEC)

NARITA INTERNATIONAL AIRPORT CORPORATION

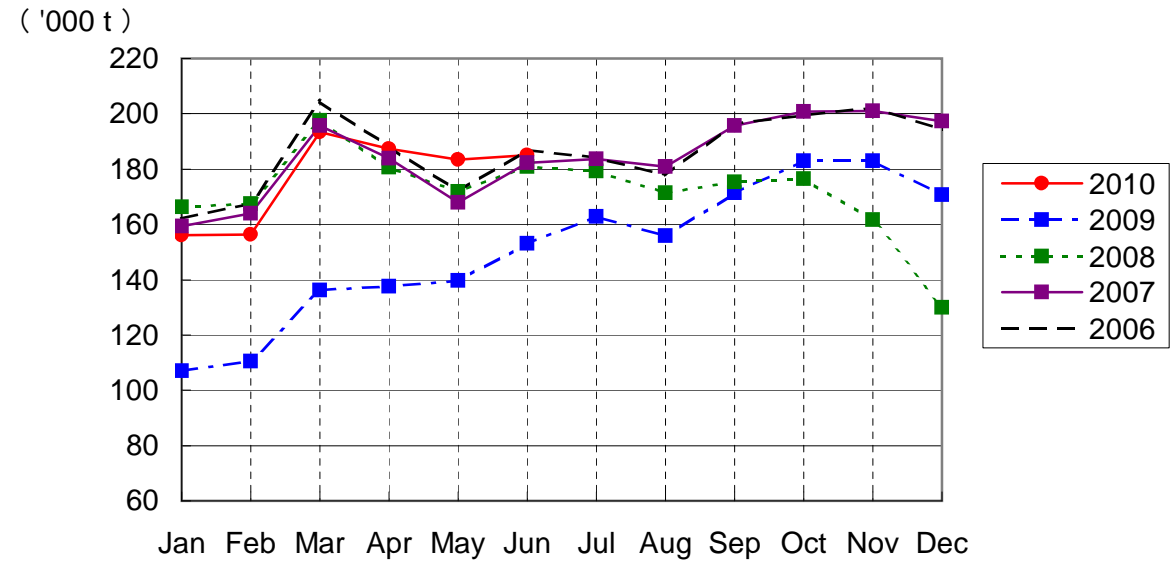
MONTH DESCRIPTION	AGGREGATE 21-May-78~ 31-Dec-09	2010												TOTAL	AVERAGE PER DAY	AGGREGATE 21-May-78 31-Dec-10	
		ACTUAL				PROV.											
		JAN	FEB	MAR	APR	MAY	JUN	JUL	AUG	SEP	OCT	NOV	DEC				
AIRCRAFT MOVEMENTS	3,870,194	15,499	14,153	15,956	15,775	16,478	15,960								93,821	518	3,964,015
		(99)	(99)	(101)	(102)	(104)	(104)								(101)		
International	3,655,811	14,051	12,826	14,516	14,327	14,957	14,466								85,143	470	3,740,954
		(97)	(96)	(99)	(100)	(102)	(102)								(100)		
PAX Flight	3,022,502	12,327	11,117	12,413	12,173	12,899	12,339								73,268	405	3,095,770
		(97)	(98)	(100)	(99)	(102)	(101)								(99)		
Cargo Flight	570,002	1,561	1,508	1,906	1,939	1,866	1,944								10,724	59	580,726
		(95)	(83)	(100)	(104)	(107)	(102)								(98)		
Others	63,307	163	201	197	215	192	183								1,151	6	64,458
		(109)	(143)	(80)	(140)	(110)	(168)								(118)		
Domestic	214,383	1,448	1,327	1,440	1,448	1,521	1,494								8,678	48	223,061
		(121)	(131)	(120)	(125)	(124)	(128)								(125)		
PAX Flight	199,116	1,420	1,285	1,419	1,432	1,485	1,438								8,479	47	207,595
		(122)	(129)	(121)	(126)	(126)	(126)								(125)		
Others	15,267	28	42	21	16	36	56								199	1	15,466
		(108)	(210)	(75)	(94)	(77)	(215)								(121)		
TERMINAL PASSENGERS	734,935,745	2,738,930	2,605,018	3,059,355	2,684,465	2,803,518	2,847,994								16,739,280	92,482	751,675,025
		(105)	(108)	(112)	(105)	(119)	(121)								(111)		
International	709,285,137	2,618,871	2,490,827	2,925,748	2,564,933	2,667,468	2,708,253								15,976,100	88,266	725,261,237
		(104)	(107)	(111)	(104)	(118)	(120)								(110)		
Japanese	409,584,476	1,342,737	1,329,667	1,674,844	1,218,687	1,366,657	1,407,315								8,339,907	46,077	417,924,383
		(104)	(97)	(110)	(98)	(119)	(132)								(109)		
Non-Japanese	158,536,359	668,568	684,082	751,922	858,618	719,887	710,048								4,393,125	24,271	162,929,484
		(100)	(130)	(113)	(114)	(124)	(131)								(118)		
Transit	141,164,302	607,566	477,078	498,982	487,628	580,924	590,890								3,243,068	17,918	144,407,370
		(107)	(111)	(110)	(103)	(107)	(90)								(104)		
Domestic	25,650,608	120,059	114,191	133,607	119,532	136,050	139,741								763,180	4,216	26,413,788
		(129)	(131)	(134)	(125)	(149)	(156)								(137)		
CARGO (t)	44,149,199	156,057	156,392	193,284	187,364	183,356	185,110								1,061,563	5,865	45,210,762
		(146)	(142)	(142)	(136)	(131)	(121)								(135)		
Loaded	20,617,338	73,940	73,896	88,296	87,458	88,623	91,085								503,298	2,781	21,120,636
		(167)	(163)	(156)	(142)	(138)	(127)								(146)		
Export	15,028,041	55,570	56,311	66,682	66,110	66,665	70,717								382,055	2,111	15,410,096
		(182)	(175)	(180)	(153)	(152)	(146)								(162)		
Transit	5,589,297	18,370	17,585	21,614	21,348	21,958	20,368								121,243	670	5,710,540
		(135)	(135)	(109)	(115)	(109)	(88)								(112)		
Unloaded	23,531,861	82,117	82,496	104,988	99,906	94,733	94,025								558,265	3,084	24,090,126
		(131)	(127)	(132)	(131)	(126)	(116)								(127)		
Import	18,076,203	63,926	65,692	84,219	79,386	74,177	75,343								442,743	2,446	18,518,946
		(128)	(125)	(139)	(137)	(133)	(127)								(132)		
Transit	5,455,658	18,191	16,804	20,769	20,520	20,556	18,682								115,522	638	5,571,180
		(144)	(132)	(111)	(115)	(105)	(84)								(111)		
FUEL SUPPLIED TO AIRCRAFT (kl)	133,971,952	398,466	363,028	405,495	392,119	411,839	402,081								2,373,028	13,111	136,344,980
		(94)	(95)	(99)	(99)	(105)	(102)								(99)		

NOTE : ()% ; Changes from the same month of previous year.

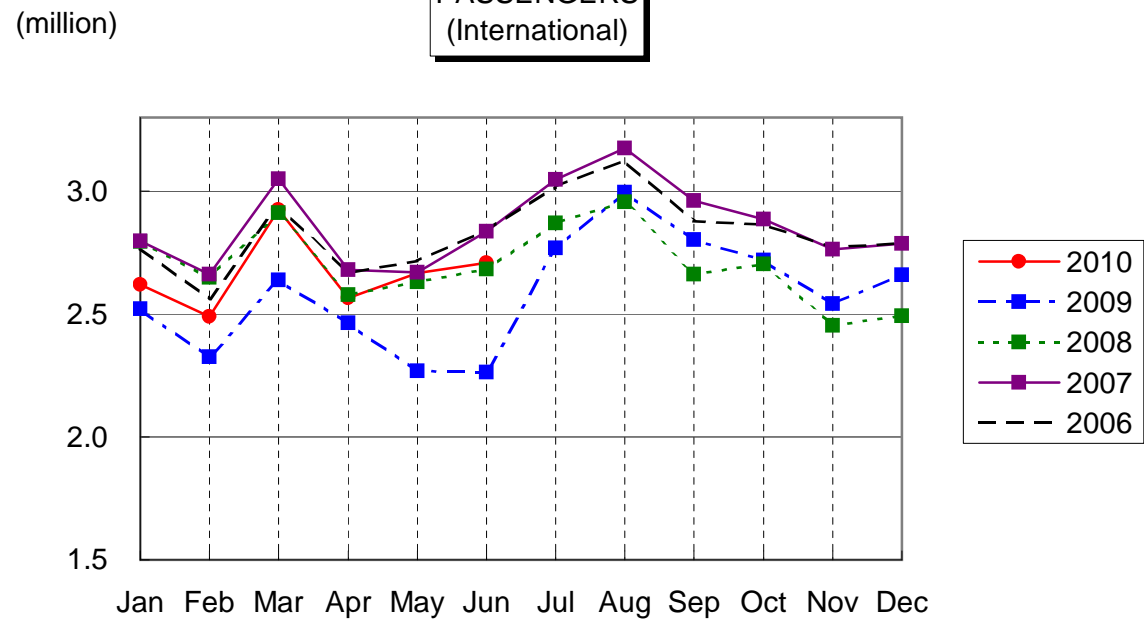
AIRCRAFT MOVEMENTS
(International)



CARGO
(International)



PASSENGERS
(International)



AVIATION FUEL SUPPLIED

