

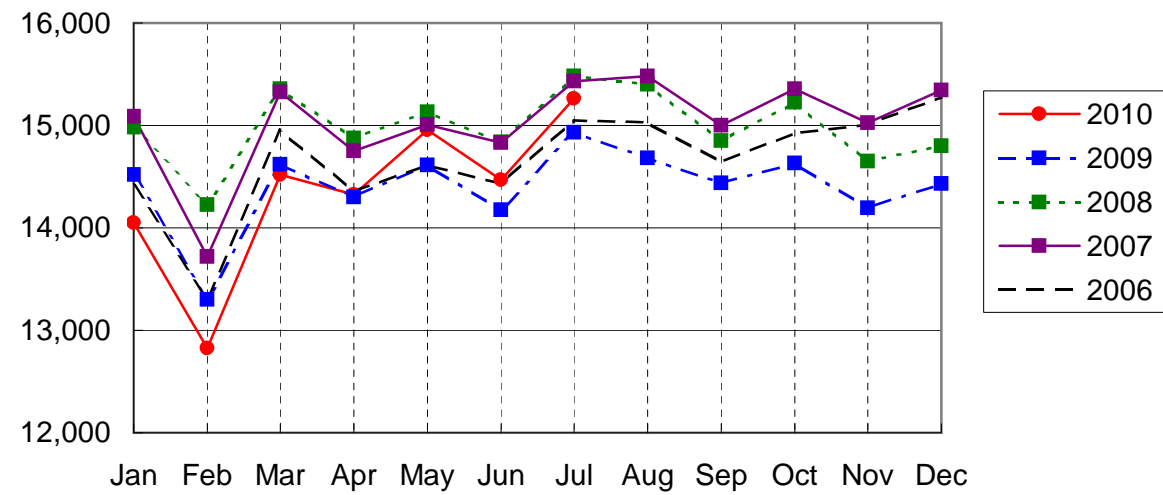
NARITA AIRPORT TRAFFIC STATISTICS -2010(JAN-DEC)

NARITA INTERNATIONAL AIRPORT CORPORATION

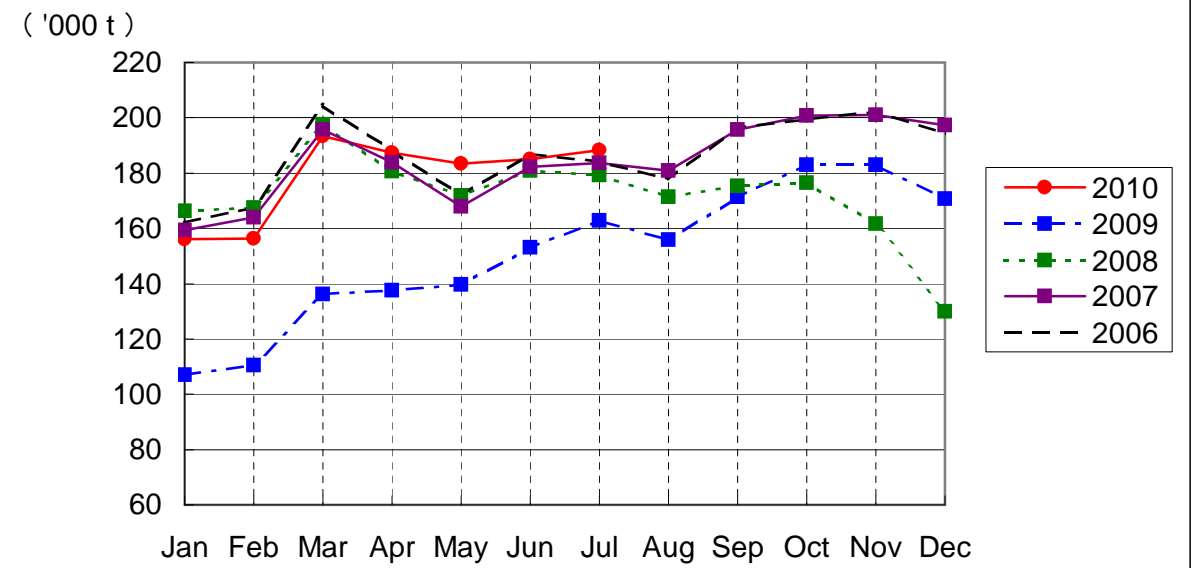
MONTH DESCRIPTION	AGGREGATE 21-May-78~ 31-Dec-09	2010												TOTAL	AVERAGE PER DAY	AGGREGATE 21-May-78 31-Dec-10
		ACTUAL					PROV.									
		JAN	FEB	MAR	APR	MAY	JUN	JUL	AUG	SEP	OCT	NOV	DEC			
AIRCRAFT MOVEMENTS	3,870,194	15,499	14,153	15,956	15,775	16,478	15,960	16,899						110,720	522	3,980,914
		(99)	(99)	(101)	(102)	(104)	(104)	(105)						(102)		
International	3,655,811	14,051	12,826	14,516	14,327	14,957	14,466	15,260						100,403	474	3,756,214
		(97)	(96)	(99)	(100)	(102)	(102)	(102)						(100)		
PAX Flight	3,022,502	12,327	11,117	12,413	12,173	12,899	12,339	13,073						86,341	407	3,108,843
		(97)	(98)	(100)	(99)	(102)	(101)	(102)						(100)		
Cargo Flight	570,002	1,561	1,508	1,906	1,939	1,866	1,944	2,030						12,754	60	582,756
		(95)	(83)	(100)	(104)	(107)	(102)	(103)						(99)		
Others	63,307	163	201	197	215	192	183	157						1,308	6	64,615
		(109)	(143)	(80)	(140)	(110)	(168)	(107)						(117)		
Domestic	214,383	1,448	1,327	1,440	1,448	1,521	1,494	1,639						10,317	49	224,700
		(121)	(131)	(120)	(125)	(124)	(128)	(136)						(127)		
PAX Flight	199,116	1,420	1,285	1,419	1,432	1,485	1,438	1,610						10,089	48	209,205
		(122)	(129)	(121)	(126)	(126)	(126)	(137)						(127)		
Others	15,267	28	42	21	16	36	56	29						228	1	15,495
		(108)	(210)	(75)	(94)	(77)	(215)	(107)						(119)		
TERMINAL PASSENGERS	734,935,745	2,738,930	2,605,018	3,059,355	2,684,465	2,803,518	2,847,994	3,069,222						19,808,502	93,436	754,744,247
		(105)	(108)	(112)	(105)	(119)	(121)	(107)						(111)		
International	709,285,137	2,618,871	2,490,827	2,925,748	2,564,933	2,667,468	2,708,253	2,920,213						18,896,313	89,134	728,181,450
		(104)	(107)	(111)	(104)	(118)	(120)	(105)						(110)		
Japanese	409,584,476	1,342,737	1,329,667	1,674,844	1,218,687	1,366,657	1,407,315	1,525,089						9,864,996	46,533	419,449,472
		(104)	(97)	(110)	(98)	(119)	(132)	(112)						(110)		
Non-Japanese	158,536,359	668,568	684,082	751,922	858,618	719,887	710,048	873,242						5,266,367	24,841	163,802,726
		(100)	(130)	(113)	(114)	(124)	(131)	(120)						(118)		
Transit	141,164,302	607,566	477,078	498,982	487,628	580,924	590,890	521,882						3,764,950	17,759	144,929,252
		(107)	(111)	(110)	(103)	(107)	(90)	(76)						(99)		
Domestic	25,650,608	120,059	114,191	133,607	119,532	136,050	139,741	149,009						912,189	4,303	26,562,797
		(129)	(131)	(134)	(125)	(149)	(156)	(137)						(137)		
CARGO (t)	44,149,199	156,057	156,392	193,284	187,364	183,356	185,110	188,191						1,249,754	5,895	45,398,953
		(146)	(142)	(142)	(136)	(131)	(121)	(116)						(132)		
Loaded	20,617,338	73,940	73,896	88,296	87,458	88,623	91,085	89,842						593,140	2,798	21,210,478
		(167)	(163)	(156)	(142)	(138)	(127)	(118)						(141)		
Export	15,028,041	55,570	56,311	66,682	66,110	66,665	70,717	68,006						450,061	2,123	15,478,102
		(182)	(175)	(180)	(153)	(152)	(146)	(131)						(157)		
Transit	5,589,297	18,370	17,585	21,614	21,348	21,958	20,368	21,836						143,079	675	5,732,376
		(135)	(135)	(109)	(115)	(109)	(88)	(90)						(108)		
Unloaded	23,531,861	82,117	82,496	104,988	99,906	94,733	94,025	98,349						656,614	3,097	24,188,475
		(131)	(127)	(132)	(131)	(126)	(116)	(114)						(125)		
Import	18,076,203	63,926	65,692	84,219	79,386	74,177	75,343	77,447						520,190	2,454	18,596,393
		(128)	(125)	(139)	(137)	(133)	(127)	(123)						(130)		
Transit	5,455,658	18,191	16,804	20,769	20,520	20,556	18,682	20,902						136,424	644	5,592,082
		(144)	(132)	(111)	(115)	(105)	(84)	(88)						(107)		
FUEL SUPPLIED TO AIRCRAFT (kl)	133,971,952	398,466	363,028	405,495	392,119	411,839	402,081	423,352						2,796,380	13,190	136,768,332
		(94)	(95)	(99)	(99)	(105)	(102)	(103)						(99)		

NOTE : ()% ; Changes from the same month of previous year.

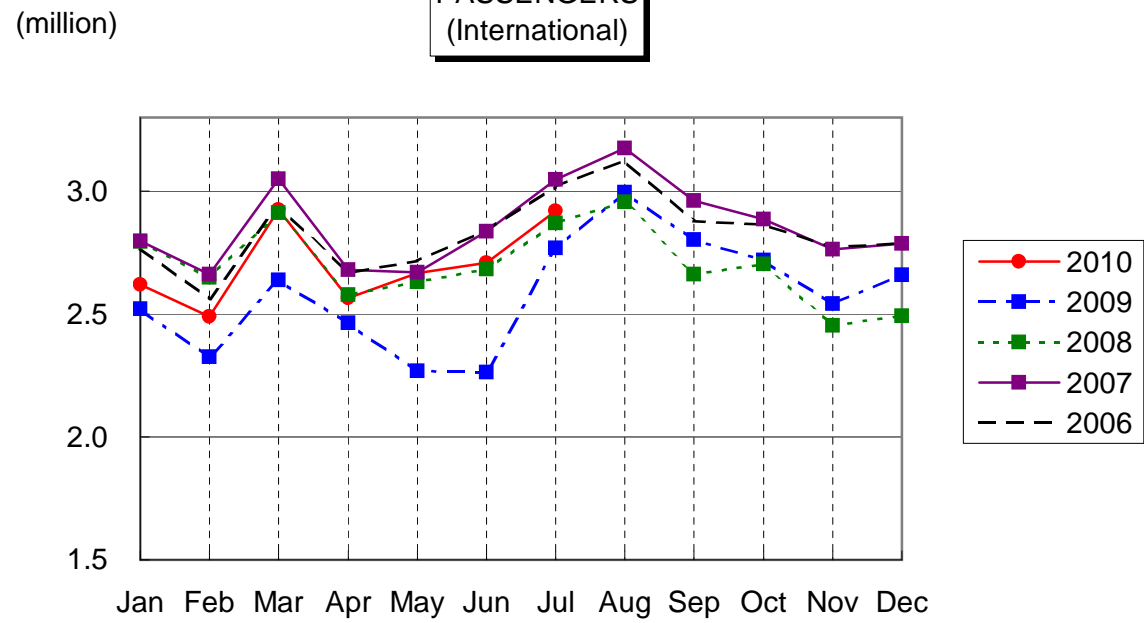
AIRCRAFT MOVEMENTS
(International)



CARGO
(International)



PASSENGERS
(International)



AVIATION FUEL SUPPLIED

