

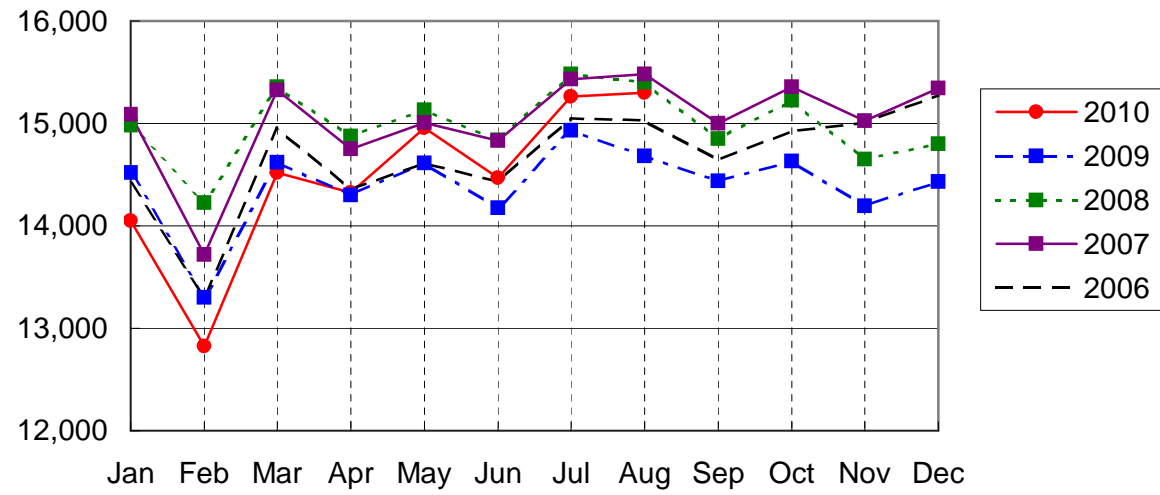
NARITA AIRPORT TRAFFIC STATISTICS -FY2010(APR.10-MAR.11)

NARITA INTERNATIONAL AIRPORT CORPORATION

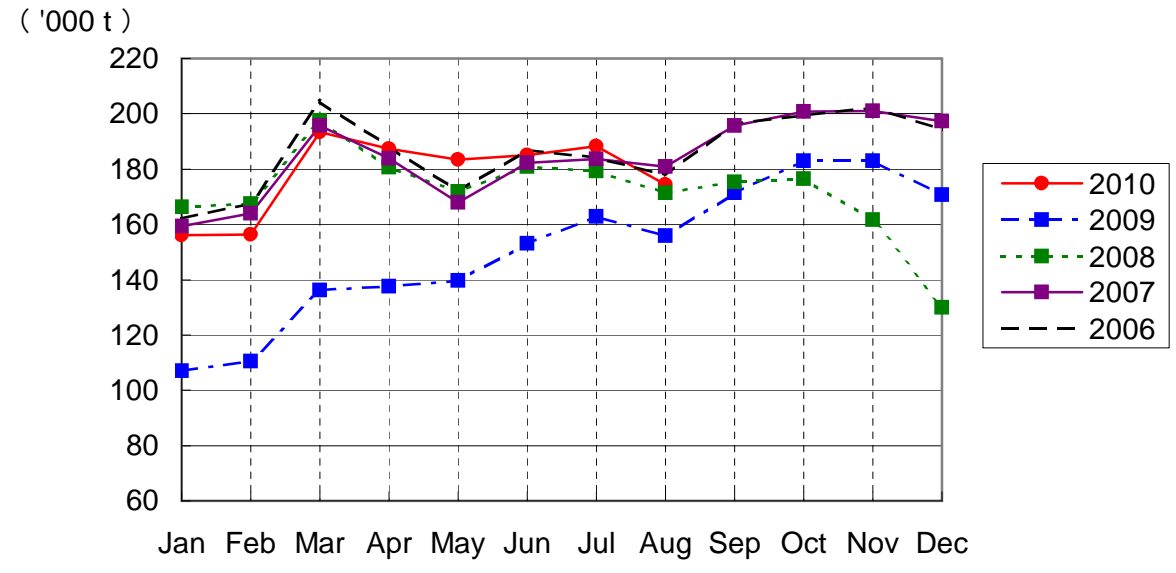
MONTH DESCRIPTION	AGGREGATE 21-May-78 ~31-Mar-10	2010						2011			TOTAL	AVERAGE PER DAY	AGGREGATE 21-May-78 ~31-MAR-10		
		ACTUAL			PROV.			JAN	FEB	MAR					
		APR	MAY	JUN	JUL	AUG	SEP							OCT	NOV
AIRCRAFT MOVEMENTS	3,915,802	15,775	16,478	15,960	16,899	16,997							82,109	537	3,997,911
		(102)	(104)	(104)	(105)	(107)							(104)		
A Runway	3,476,650	9,734	9,918	9,767	10,419	10,467							50,305	329	3,526,955
		(93)	(93)	(93)	(95)	(96)							(94)		
B Runway	439,152	6,041	6,560	6,193	6,480	6,530							31,804	208	470,956
		(121)	(128)	(127)	(126)	(131)							(126)		
International	3,697,204	14,327	14,957	14,466	15,260	15,299							74,309	486	3,771,513
		(100)	(102)	(102)	(102)	(104)							(102)		
PAX Flight	3,058,359	12,173	12,899	12,339	13,073	13,254							63,738	417	3,122,097
		(99)	(102)	(101)	(102)	(103)							(102)		
Cargo Flight	574,977	1,939	1,866	1,944	2,030	1,864							9,643	63	584,620
		(104)	(107)	(102)	(103)	(107)							(104)		
Others	63,868	215	192	183	157	181							928	6	64,796
		(140)	(110)	(168)	(107)	(151)							(132)		
Domestic	218,598	1,448	1,521	1,494	1,639	1,698							7,800	51	226,398
		(125)	(124)	(128)	(136)	(143)							(131)		
PAX Flight	203,240	1,432	1,485	1,438	1,610	1,676							7,641	50	210,881
		(126)	(126)	(126)	(137)	(144)							(132)		
Others	15,358	16	36	56	29	22							159	1	15,517
		(94)	(77)	(215)	(107)	(96)							(114)		
TERMINAL PASSENGERS	743,339,048	2,684,465	2,803,518	2,847,994	3,069,222	3,210,223							14,615,422	95,526	757,954,470
		(105)	(119)	(121)	(107)	(103)							(110)		
International	717,320,583	2,564,933	2,667,468	2,708,253	2,920,213	3,054,055							13,914,922	90,947	731,235,505
		(104)	(118)	(120)	(105)	(102)							(109)		
Japanese	413,931,724	1,218,687	1,366,657	1,407,315	1,525,089	1,779,906							7,297,654	47,697	421,229,378
		(98)	(119)	(132)	(112)	(109)							(113)		
Non-Japanese	160,640,931	858,618	719,887	710,048	873,242	807,401							3,969,196	25,942	164,610,127
		(114)	(124)	(131)	(120)	(104)							(117)		
Transit	142,747,928	487,628	580,924	590,890	521,882	466,748							2,648,072	17,308	145,396,000
		(103)	(107)	(90)	(76)	(80)							(90)		
Domestic	26,018,465	119,532	136,050	139,741	149,009	156,168							700,500	4,578	26,718,965
		(125)	(149)	(156)	(137)	(135)							(140)		
CARGO (t)	44,654,932	187,364	183,356	185,110	188,191	174,483							918,504	6,003	45,573,436
		(136)	(131)	(121)	(116)	(112)							(123)		
Loaded	20,853,470	87,458	88,623	91,085	89,842	81,107							438,115	2,863	21,291,585
		(142)	(138)	(127)	(118)	(112)							(127)		
Export	15,206,604	66,110	66,665	70,717	68,006	60,790							332,288	2,172	15,538,892
		(153)	(152)	(146)	(131)	(120)							(139)		
Transit	5,646,866	21,348	21,958	20,368	21,836	20,317							105,827	692	5,752,693
		(115)	(109)	(88)	(90)	(93)							(98)		
Unloaded	23,801,462	99,906	94,733	94,025	98,349	93,376							480,389	3,140	24,281,851
		(131)	(126)	(116)	(114)	(112)							(119)		
Import	18,290,040	79,386	74,177	75,343	77,447	74,440							380,793	2,489	18,670,833
		(137)	(133)	(127)	(123)	(120)							(128)		
Transit	5,511,422	20,520	20,556	18,682	20,902	18,936							99,596	651	5,611,018
		(115)	(105)	(84)	(88)	(89)							(95)		
FUEL SUPPLIED	135,138,941	392,119	411,839	402,081	423,352	423,257							2,052,648	13,416	137,191,589
		(99)	(105)	(102)	(103)	(103)							(102)		

NOTE : () % ; Changes from the same month of previous year.

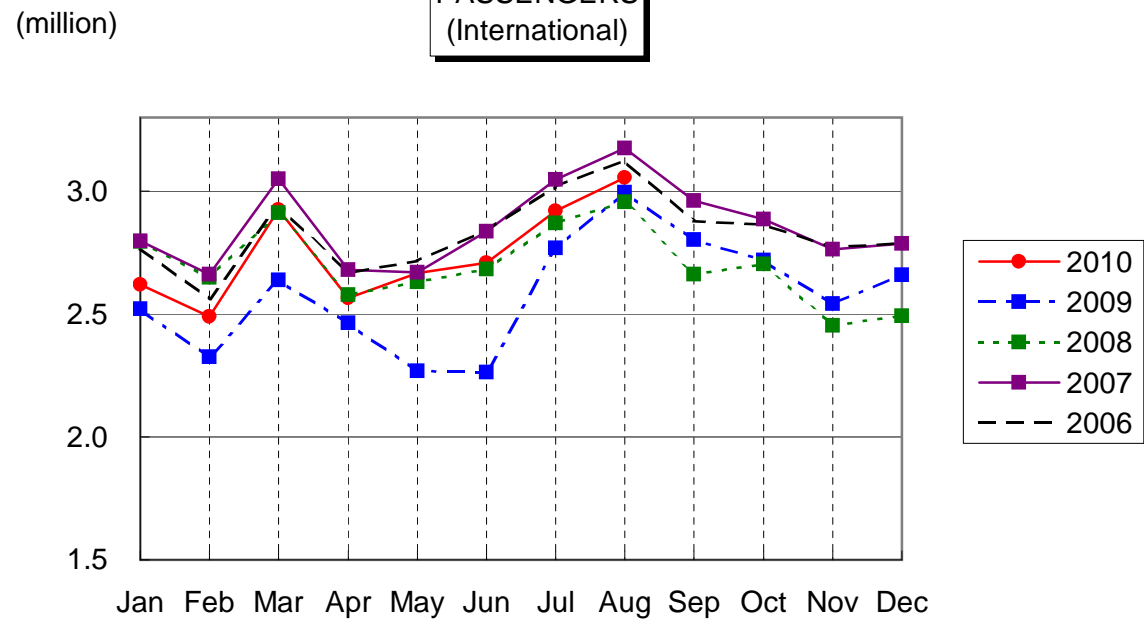
AIRCRAFT MOVEMENTS
(International)



CARGO
(International)



PASSENGERS
(International)



AVIATION FUEL SUPPLIED

