

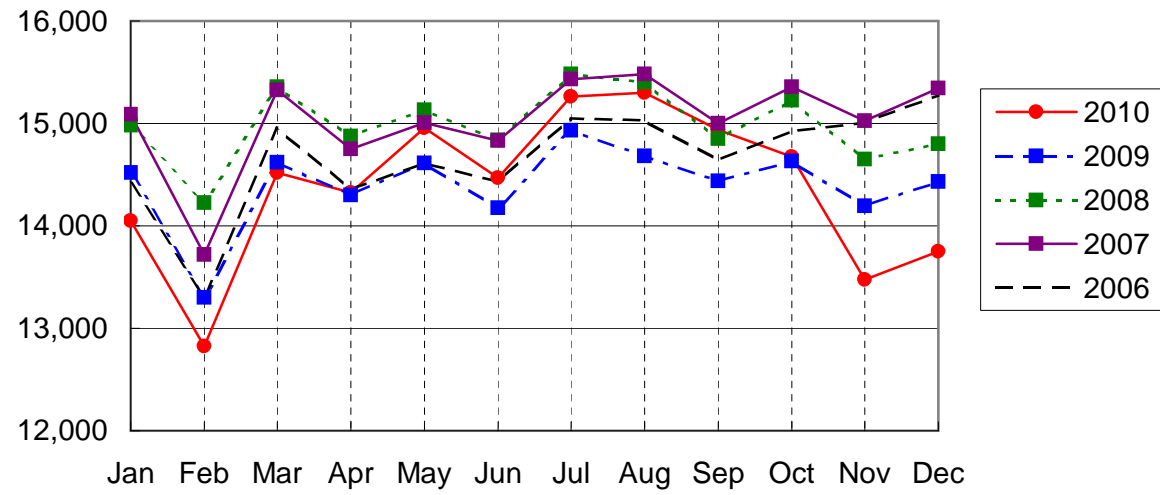
NARITA AIRPORT TRAFFIC STATISTICS -2010(JAN-DEC)

NARITA INTERNATIONAL AIRPORT CORPORATION

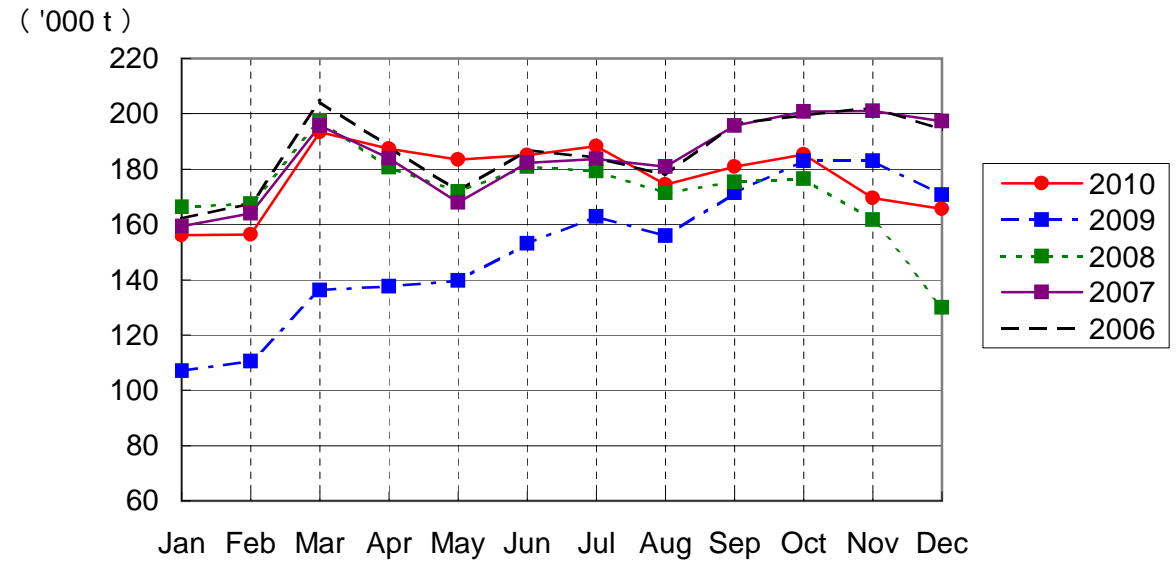
MONTH DESCRIPTION	AGGREGATE 21-May-78~ 31-Dec-09	2010												TOTAL	AVERAGE PER DAY	AGGREGATE 21-May-78 31-Dec-10
		ACTUAL										PROV.				
		JAN	FEB	MAR	APR	MAY	JUN	JUL	AUG	SEP	OCT	NOV	DEC			
AIRCRAFT MOVEMENTS	3,870,194	15,499	14,153	15,956	15,775	16,478	15,960	16,899	16,997	16,575	16,378	15,233	15,556	191,459	525	4,061,653
		(99)	(99)	(101)	(102)	(104)	(104)	(105)	(107)	(106)	(103)	(98)	(98)	(102)		
International	3,655,811	14,051	12,826	14,516	14,327	14,957	14,466	15,260	15,299	14,936	14,678	13,472	13,753	172,541	473	3,828,352
		(97)	(96)	(99)	(100)	(102)	(102)	(102)	(104)	(103)	(100)	(95)	(95)	(100)		
PAX Flight	3,022,502	12,327	11,117	12,413	12,173	12,899	12,339	13,073	13,254	12,825	12,590	11,539	11,841	148,390	407	3,170,892
		(97)	(98)	(100)	(99)	(102)	(101)	(102)	(103)	(104)	(101)	(95)	(96)	(100)		
Cargo Flight	570,002	1,561	1,508	1,906	1,939	1,866	1,944	2,030	1,864	1,874	1,854	1,749	1,762	21,857	60	591,859
		(95)	(83)	(100)	(104)	(107)	(102)	(103)	(107)	(99)	(96)	(92)	(93)	(98)		
Others	63,307	163	201	197	215	192	183	157	181	237	234	184	150	2,294	6	65,601
		(109)	(143)	(80)	(140)	(110)	(168)	(107)	(151)	(143)	(109)	(121)	(82)	(117)		
Domestic	214,383	1,448	1,327	1,440	1,448	1,521	1,494	1,639	1,698	1,639	1,700	1,761	1,803	18,918	52	233,301
		(121)	(131)	(120)	(125)	(124)	(128)	(136)	(143)	(143)	(139)	(129)	(130)	(131)		
PAX Flight	199,116	1,420	1,285	1,419	1,432	1,485	1,438	1,610	1,676	1,617	1,674	1,741	1,782	18,579	51	217,695
		(122)	(129)	(121)	(126)	(126)	(126)	(137)	(144)	(143)	(142)	(132)	(132)	(132)		
Others	15,267	28	42	21	16	36	56	29	22	22	26	20	21	339	1	15,606
		(108)	(210)	(75)	(94)	(77)	(215)	(107)	(96)	(116)	(63)	(51)	(75)	(99)		
TERMINAL PASSENGERS	734,935,745	2,738,930	2,605,018	3,059,355	2,684,465	2,803,518	2,847,994	3,069,222	3,210,223	2,998,662	2,879,173	2,493,698	2,478,424	33,868,682	92,791	768,804,427
		(105)	(108)	(112)	(105)	(119)	(121)	(107)	(103)	(103)	(102)	(94)	(89)	(105)		
International	709,285,137	2,618,871	2,490,827	2,925,748	2,564,933	2,667,468	2,708,253	2,920,213	3,054,055	2,852,917	2,729,865	2,348,986	2,334,162	32,216,298	88,264	741,501,435
		(104)	(107)	(111)	(104)	(118)	(120)	(105)	(102)	(102)	(100)	(92)	(88)	(104)		
Japanese	409,584,476	1,342,737	1,329,667	1,674,844	1,218,687	1,366,657	1,407,315	1,525,089	1,779,906	1,713,039	1,520,160	1,312,935	1,220,837	17,411,873	47,704	426,996,349
		(104)	(97)	(110)	(98)	(119)	(132)	(112)	(109)	(98)	(104)	(96)	(91)	(105)		
Non-Japanese	158,536,359	668,568	684,082	751,922	858,618	719,887	710,048	873,242	807,401	711,576	745,025	617,265	630,395	8,778,029	24,049	167,314,388
		(100)	(130)	(113)	(114)	(124)	(131)	(120)	(104)	(114)	(100)	(92)	(87)	(110)		
Transit	141,164,302	607,566	477,078	498,982	487,628	580,924	590,890	521,882	466,748	428,302	464,680	418,786	482,930	6,026,396	16,511	147,190,698
		(107)	(111)	(110)	(103)	(107)	(90)	(76)	(80)	(98)	(91)	(82)	(81)	(94)		
Domestic	25,650,608	120,059	114,191	133,607	119,532	136,050	139,741	149,009	156,168	145,745	149,308	144,712	144,262	1,652,384	4,527	27,302,992
		(129)	(131)	(134)	(125)	(149)	(156)	(137)	(135)	(129)	(130)	(126)	(123)	(133)		
CARGO (t)	44,149,199	156,057	156,392	193,284	187,364	183,356	185,110	188,191	174,482	180,868	185,364	169,579	165,683	2,125,730	5,824	46,274,929
		(146)	(142)	(142)	(136)	(131)	(121)	(116)	(112)	(106)	(101)	(93)	(97)	(117)		
Loaded	20,617,338	73,940	73,896	88,296	87,458	88,623	91,085	89,842	81,107	85,880	86,224	77,677	77,714	1,001,742	2,744	21,619,080
		(167)	(163)	(156)	(142)	(138)	(127)	(118)	(112)	(105)	(97)	(90)	(97)	(121)		
Export	15,028,041	55,570	56,311	66,682	66,110	66,665	70,717	68,006	60,790	68,085	68,353	61,956	64,564	773,809	2,120	15,801,850
		(182)	(175)	(180)	(153)	(152)	(146)	(131)	(120)	(114)	(103)	(101)	(105)	(132)		
Transit	5,589,297	18,370	17,585	21,614	21,348	21,958	20,368	21,836	20,317	17,795	17,871	15,721	13,150	227,933	624	5,817,230
		(135)	(135)	(109)	(115)	(109)	(88)	(90)	(93)	(80)	(79)	(64)	(72)	(94)		
Unloaded	23,531,861	82,117	82,496	104,988	99,906	94,733	94,025	98,349	93,375	94,988	99,140	91,902	87,969	1,123,988	3,079	24,655,849
		(131)	(127)	(132)	(131)	(126)	(116)	(114)	(112)	(106)	(106)	(95)	(97)	(115)		
Import	18,076,203	63,926	65,692	84,219	79,386	74,177	75,343	77,447	74,440	77,945	81,610	77,494	75,092	906,771	2,484	18,982,974
		(128)	(125)	(139)	(137)	(133)	(127)	(123)	(120)	(114)	(114)	(105)	(103)	(121)		
Transit	5,455,658	18,191	16,804	20,769	20,520	20,556	18,682	20,902	18,935	17,043	17,530	14,408	12,877	217,217	595	5,672,875
		(144)	(132)	(111)	(115)	(105)	(84)	(88)	(89)	(80)	(78)	(63)	(72)	(93)		
FUEL SUPPLIED TO AIRCRAFT (kl)	133,971,952	398,466	363,028	405,495	392,119	411,839	402,081	423,352	423,257	406,070	398,170	378,661	387,240	4,789,778	13,123	138,761,730
		(94)	(95)	(99)	(99)	(105)	(102)	(103)	(103)	(101)	(98)	(96)	(95)	(99)		

NOTE : ()% ; Changes from the same month of previous year.

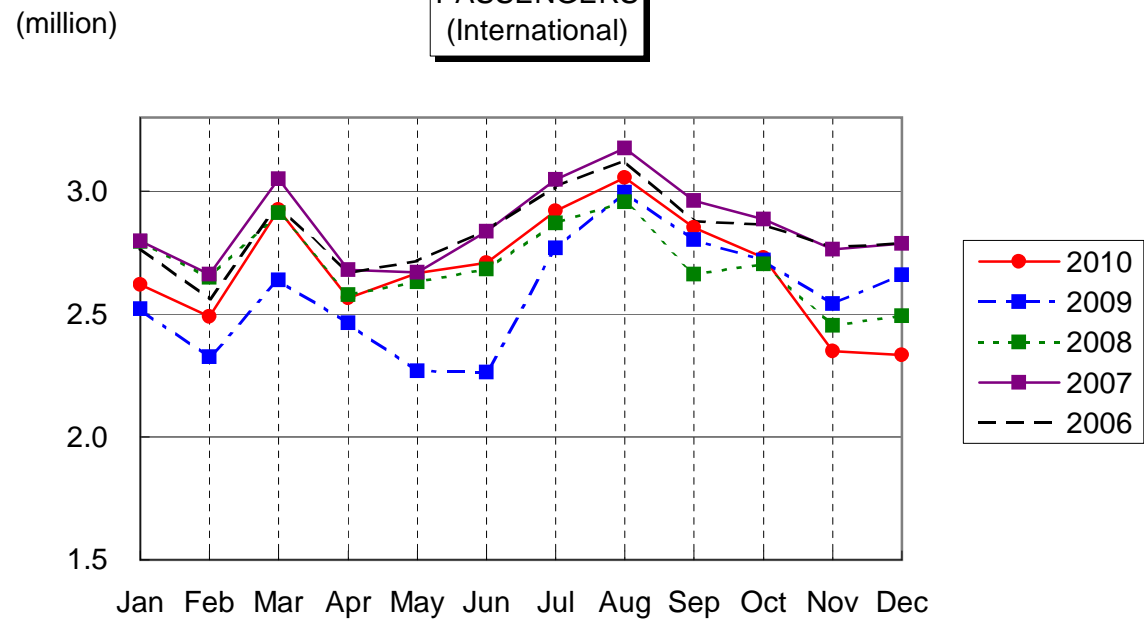
AIRCRAFT MOVEMENTS
(International)



CARGO
(International)



PASSENGERS
(International)



AVIATION FUEL SUPPLIED

