

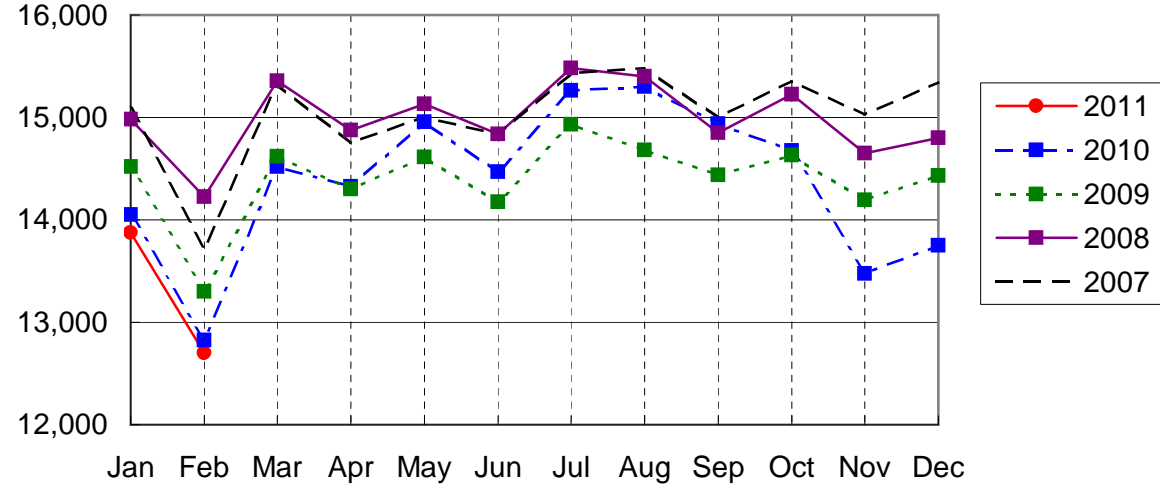
NARITA AIRPORT TRAFFIC STATISTICS -2011(JAN-DEC)

NARITA INTERNATIONAL AIRPORT CORPORATION

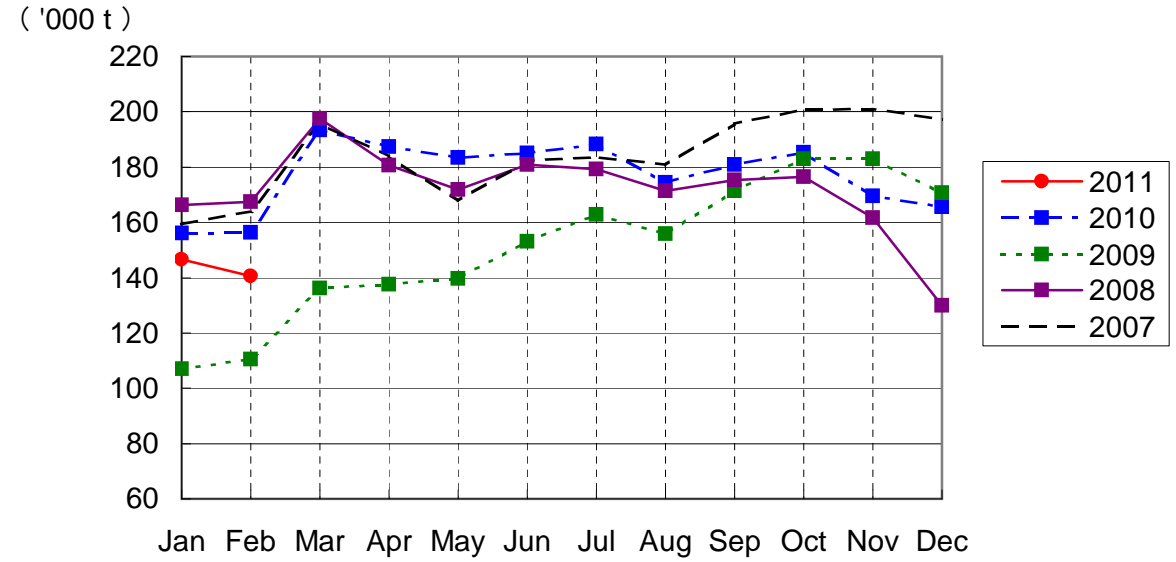
MONTH DESCRIPTION	AGGREGATE 21-May-78~ 31-Dec-10	2011												AGGREGATE 21-May-78 31-Dec-11		
		PROV.		MAR	APR	MAY	JUN	JUL	AUG	SEP	OCT	NOV	DEC		TOTAL	AVERAGE PER DAY
		JAN	FEB													
AIRCRAFT MOVEMENTS	4,061,653	15,690 (101)	14,340 (101)											30,030 (101)	509	4,091,683
International	3,828,352	13,873 (99)	12,703 (99)											26,576 (99)	450	3,854,928
PAX Flight	3,170,892	12,155 (99)	11,037 (99)											23,192 (99)	393	3,194,084
Cargo Flight	591,859	1,609 (103)	1,509 (100)											3,118 (102)	53	594,977
Others	65,601	109 (67)	157 (78)											266 (73)	5	65,867
Domestic	233,301	1,817 (125)	1,637 (123)											3,454 (124)	59	236,755
PAX Flight	217,695	1,785 (126)	1,624 (126)											3,409 (126)	58	221,104
Others	15,606	32 (114)	13 (31)											45 (64)	1	15,651
TERMINAL PASSENGERS	768,804,427	2,513,862 (92)	2,365,919 (91)											4,879,781 (91)	82,708	773,684,208
International	741,501,435	2,370,536 (91)	2,233,800 (90)											4,604,336 (90)	78,040	746,105,771
Japanese	426,996,349	1,216,128 (91)	1,232,871 (93)											2,448,999 (92)	41,508	429,445,348
Non-Japanese	167,314,388	641,908 (96)	610,381 (89)											1,252,289 (93)	21,225	168,566,677
Transit	147,190,698	512,500 (84)	390,548 (82)											903,048 (83)	15,306	148,093,746
Domestic	27,302,992	143,326 (119)	132,119 (116)											275,445 (118)	4,669	27,578,437
CARGO (t)	46,274,929	146,658 (94)	140,608 (90)											287,266 (92)	4,869	46,562,195
Loaded	21,619,080	67,943 (92)	65,786 (89)											133,729 (90)	2,267	21,752,809
Export	15,801,850	54,079 (97)	54,722 (97)											108,801 (97)	1,844	15,910,651
Transit	5,817,230	13,864 (75)	11,064 (63)											24,928 (69)	423	5,842,158
Unloaded	24,655,849	78,715 (96)	74,822 (91)											153,537 (93)	2,602	24,809,386
Import	18,982,974	65,310 (102)	64,336 (98)											129,646 (100)	2,197	19,112,620
Transit	5,672,875	13,405 (74)	10,486 (62)											23,891 (68)	405	5,696,766
FUEL SUPPLIED TO AIRCRAFT (kl)	138,761,730	392,111 (98)	345,238 (95)											737,349 (97)	12,497	139,499,079

NOTE : ()% ; Changes from the same month of previous year.

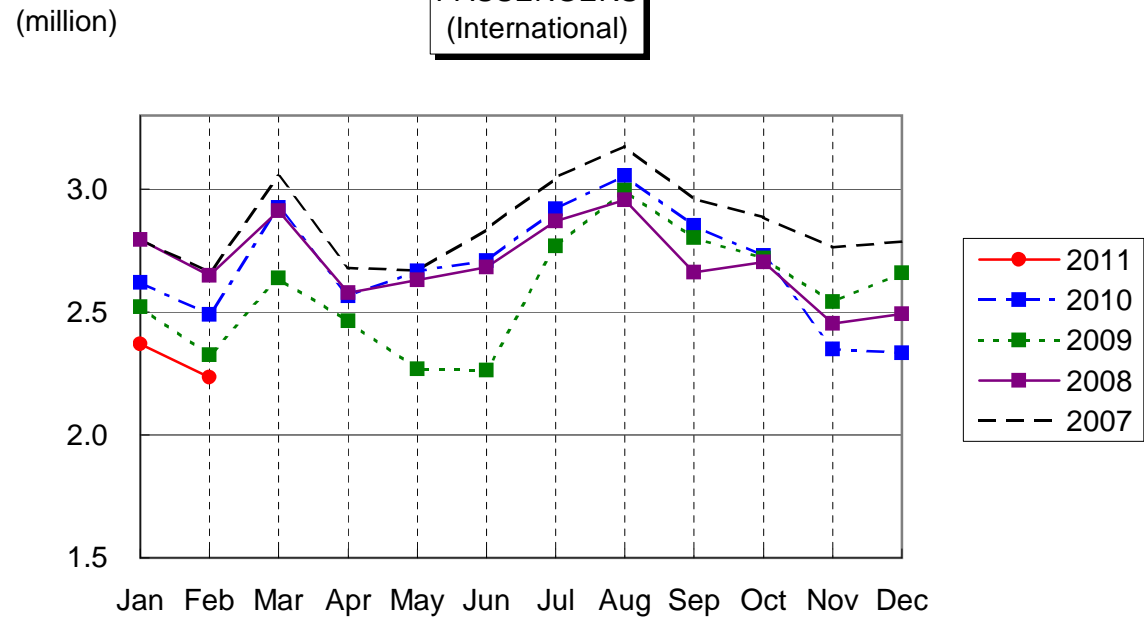
AIRCRAFT MOVEMENTS
(International)



CARGO
(International)



PASSENGERS
(International)



AVIATION FUEL SUPPLIED

