

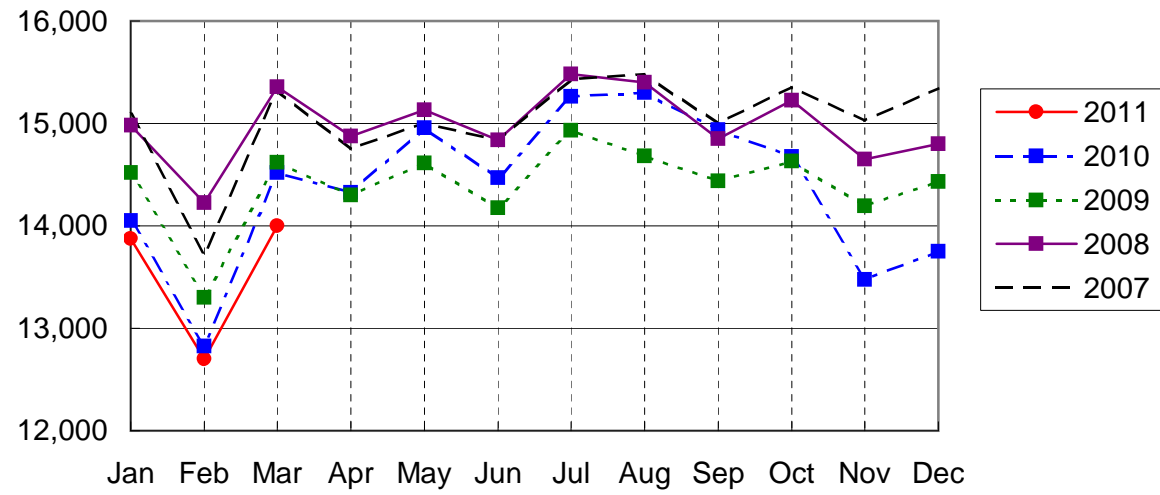
NARITA AIRPORT TRAFFIC STATISTICS -2011(JAN-DEC)

NARITA INTERNATIONAL AIRPORT CORPORATION

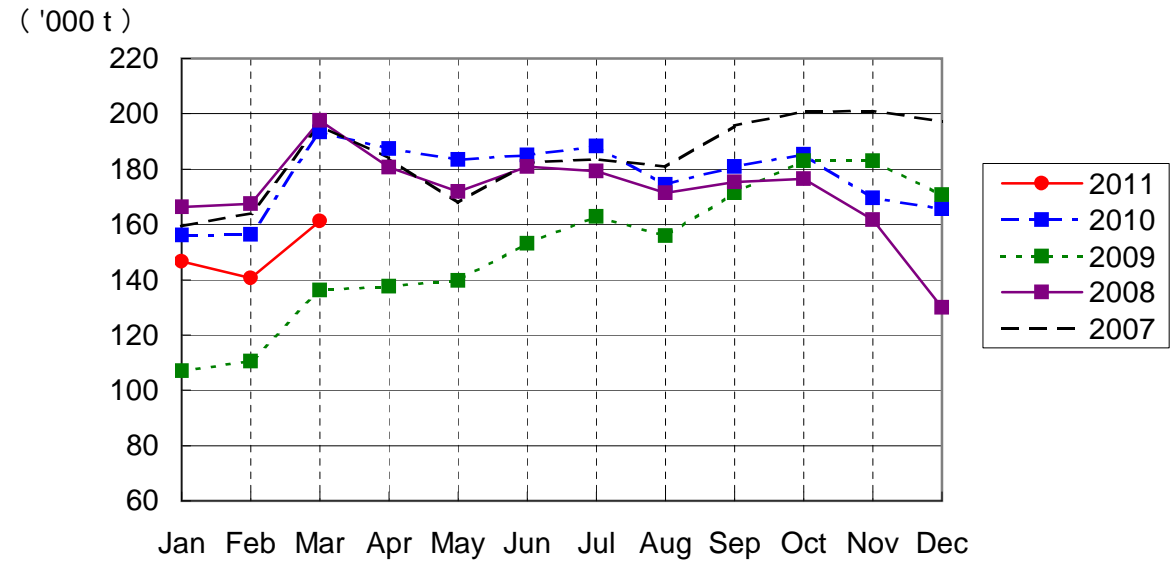
MONTH DESCRIPTION	AGGREGATE 21-May-78~ 31-Dec-10	2011												TOTAL	AVERAGE PER DAY	AGGREGATE 21-May-78 31-Dec-11	
		ACTUAL JAN	PROV. FEB MAR		APR	MAY	JUN	JUL	AUG	SEP	OCT	NOV	DEC				
AIRCRAFT MOVEMENTS	4,061,653	15,690	14,340	15,545											45,575	506	4,107,228
		(101)	(101)	(97)											(100)		
International	3,828,352	13,873	12,703	14,000											40,576	451	3,868,928
		(99)	(99)	(96)											(98)		
PAX Flight	3,170,892	12,155	11,037	11,892											35,084	390	3,205,976
		(99)	(99)	(96)											(98)		
Cargo Flight	591,859	1,609	1,509	1,840											4,958	55	596,817
		(103)	(100)	(97)											(100)		
Others	65,601	109	157	268											534	6	66,135
		(67)	(78)	(136)											(95)		
Domestic	233,301	1,817	1,637	1,545											5,091	57	238,392
		(125)	(123)	(107)											(121)		
PAX Flight	217,695	1,785	1,624	1,516											5,033	56	222,728
		(126)	(126)	(107)											(122)		
Others	15,606	32	13	29											58	1	15,664
		(114)	(31)	(138)											(64)		
TERMINAL PASSENGERS	768,804,427	2,513,862	2,365,919	2,175,406											7,055,187	78,391	775,859,614
		(92)	(91)	(71)											(84)		
International	741,501,435	2,370,536	2,233,800	2,043,888											6,648,224	73,869	748,149,659
		(91)	(90)	(70)											(83)		
Japanese	426,996,349	1,216,128	1,232,871	1,185,056											3,634,055	40,378	430,630,404
		(91)	(93)	(71)											(84)		
Non-Japanese	167,314,388	641,908	610,381	494,326											1,746,615	19,407	169,061,003
		(96)	(89)	(66)											(83)		
Transit	147,190,698	512,500	390,548	364,506											1,267,554	14,084	148,458,252
		(84)	(82)	(73)											(80)		
Domestic	27,302,992	143,326	132,119	131,518											406,963	4,522	27,709,955
		(119)	(116)	(98)											(111)		
CARGO (t)	46,274,929	146,658	140,608	161,119											448,385	4,982	46,723,314
		(94)	(90)	(83)											(89)		
Loaded	21,619,080	67,943	65,786	72,815											206,544	2,295	21,825,624
		(92)	(89)	(82)											(87)		
Export	15,801,850	54,079	54,722	57,196											165,997	1,844	15,967,847
		(97)	(97)	(86)											(93)		
Transit	5,817,230	13,864	11,064	15,619											40,547	451	5,857,777
		(75)	(63)	(72)											(70)		
Unloaded	24,655,849	78,715	74,822	88,304											241,841	2,687	24,897,690
		(96)	(91)	(84)											(90)		
Import	18,982,974	65,310	64,336	72,942											202,588	2,251	19,185,562
		(102)	(98)	(87)											(95)		
Transit	5,672,875	13,405	10,486	15,362											39,253	436	5,712,128
		(74)	(62)	(74)											(70)		
FUEL SUPPLIED TO AIRCRAFT (kl)	138,761,730	392,111	345,238	317,266											1,054,615	11,718	139,816,345
		(98)	(95)	(78)											(90)		

NOTE : ()% ; Changes from the same month of previous year.

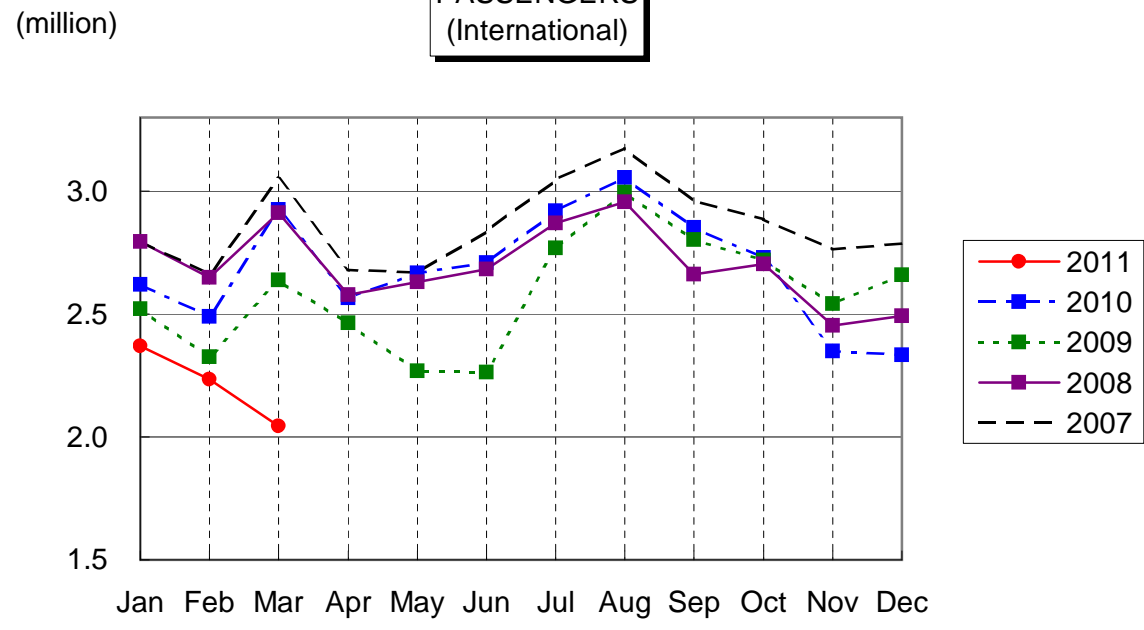
AIRCRAFT MOVEMENTS
(International)



CARGO
(International)



PASSENGERS
(International)



AVIATION FUEL SUPPLIED

