

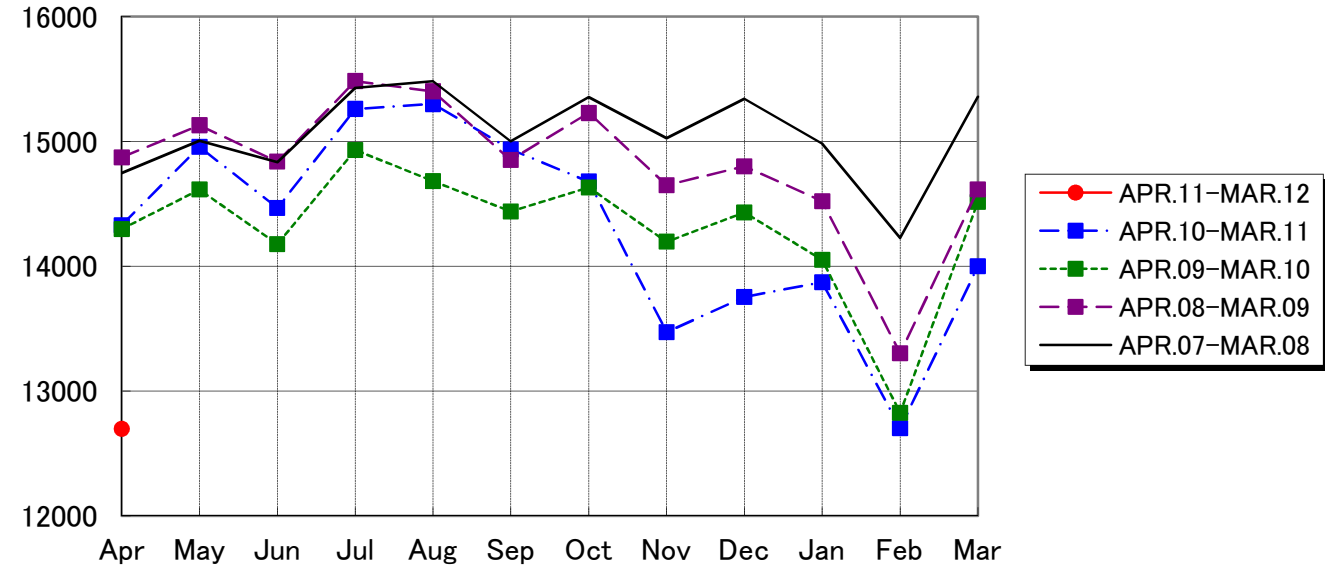
NARITA AIRPORT TRAFFIC STATISTICS -2011(JAN-DEC)

NARITA INTERNATIONAL AIRPORT CORPORATION

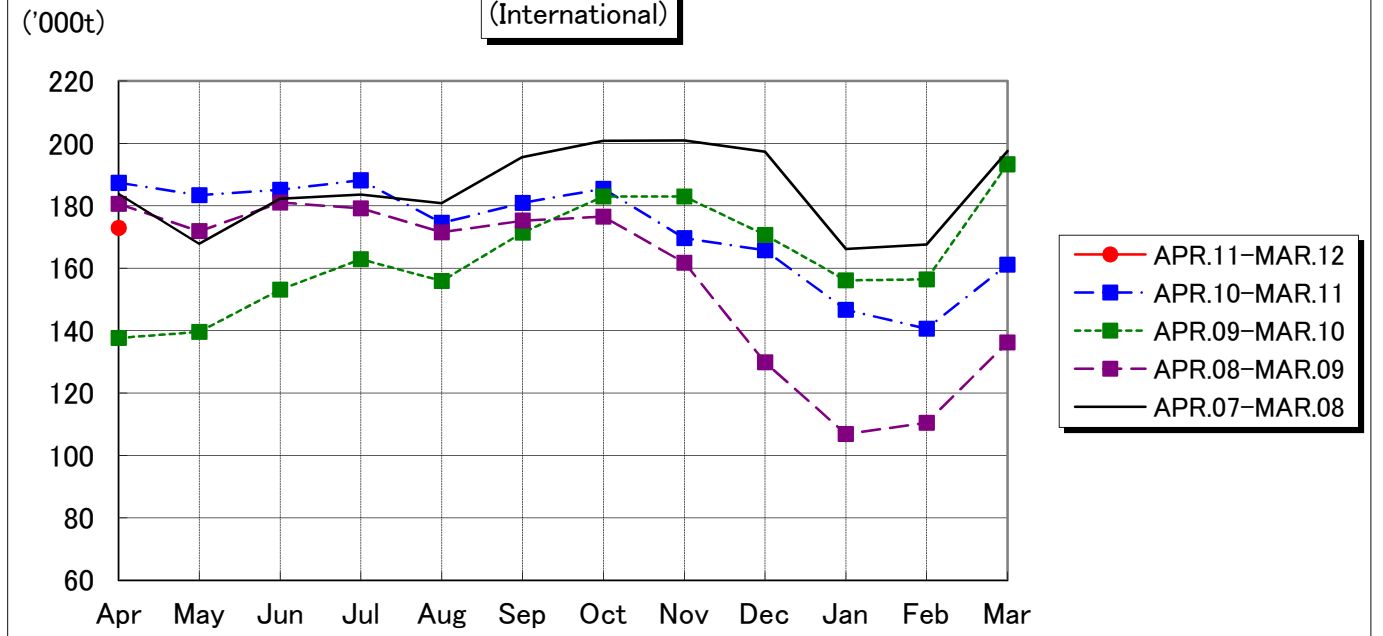
MONTH DESCRIPTION	AGGREGATE 21-May-78~ 31-Dec-10	2011												TOTAL	AVERAGE PER DAY	AGGREGATE 21-May-78 31-Dec-11
		ACTUAL		PROV.		MAY	JUN	JUL	AUG	SEP	OCT	NOV	DEC			
		JAN	FEB	MAR	APR											
AIRCRAFT MOVEMENTS	4,061,653	15,690	14,340	15,545	14,277									59,852	499	4,121,505
International	3,828,352	13,873	12,703	14,000	12,697									53,273	444	3,881,625
PAX Flight	3,170,892	12,155	11,037	11,892	10,531									45,615	380	3,216,507
Cargo Flight	591,859	1,609	1,509	1,840	2,031									6,989	58	598,848
Others	65,601	109	157	268	135									669	6	66,270
Domestic	233,301	1,817	1,637	1,545	1,580									6,579	55	239,880
PAX Flight	217,695	1,785	1,624	1,516	1,556									6,481	54	224,176
Others	15,606	32	13	29	24									98	1	15,704
TERMINAL PASSENGERS	768,804,427	2,513,862	2,365,919	2,175,406	1,672,833									8,728,020	72,734	777,532,447
International	741,501,435	2,370,536	2,233,800	2,043,888	1,569,720									8,217,944	68,483	749,719,379
Japanese	426,996,349	1,216,128	1,232,871	1,185,056	896,253									4,530,308	37,753	431,526,657
Non-Japanese	167,314,388	641,908	610,381	494,326	321,625									2,068,240	17,235	169,382,628
Transit	147,190,698	512,500	390,548	364,506	351,842									1,619,396	13,495	148,810,094
Domestic	27,302,992	143,326	132,119	131,518	103,113									510,076	4,251	27,813,068
CARGO (t)	46,274,929	146,658	140,608	161,119	172,905									448,385	4,982	46,723,314
Loaded	21,619,080	67,943	65,786	72,815	78,610									206,544	2,295	21,825,624
Export	15,801,850	54,079	54,722	57,196	62,749									165,997	1,844	15,967,847
Transit	5,817,230	13,864	11,064	15,619	15,861									40,547	451	5,857,777
Unloaded	24,655,849	78,715	74,822	88,304	94,295									241,841	2,687	24,897,690
Import	18,982,974	65,310	64,336	72,942	78,800									202,588	2,251	19,185,562
Transit	5,672,875	13,405	10,486	15,362	15,495									39,253	436	5,712,128
FUEL SUPPLIED TO AIRCRAFT (kl)	138,761,730	392,111	345,238	317,266	307,450									1,362,065	11,351	140,123,795

NOTE : ()% ; Changes from the same month of previous year.

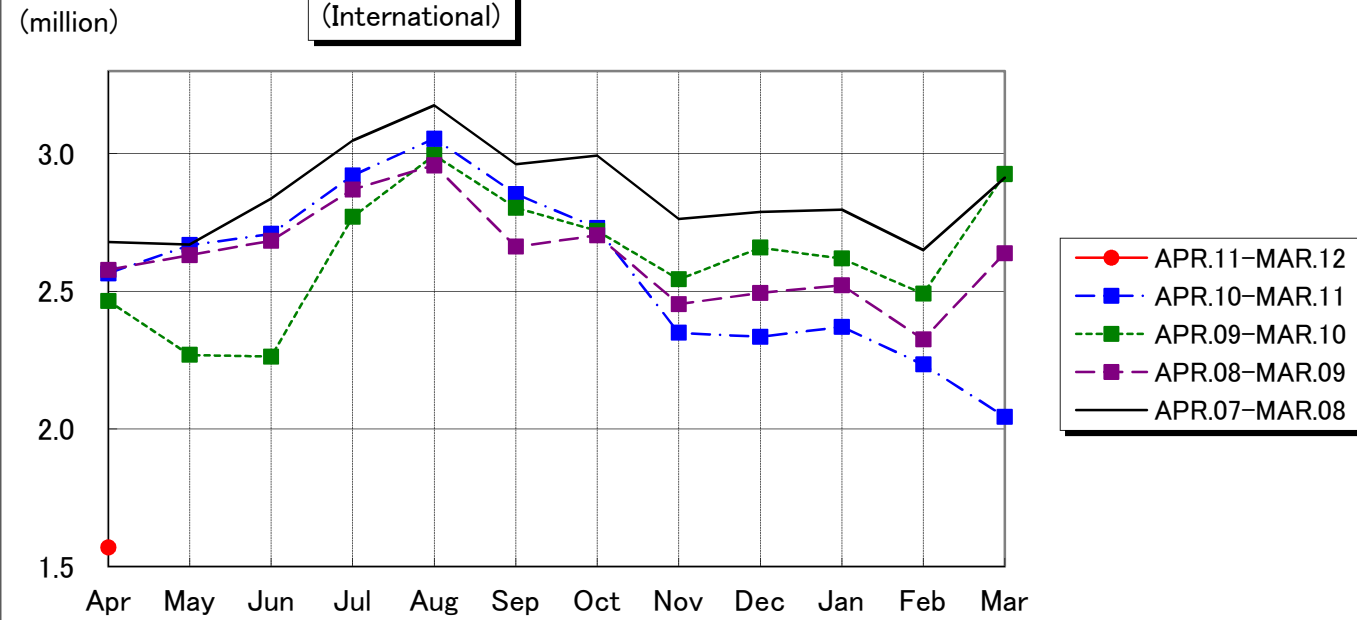
AIRCRAFT MOVEMENTS
(International)



CARGO
(International)



PASSENGERS
(International)



AVIATION FUEL SUPPLIED

