

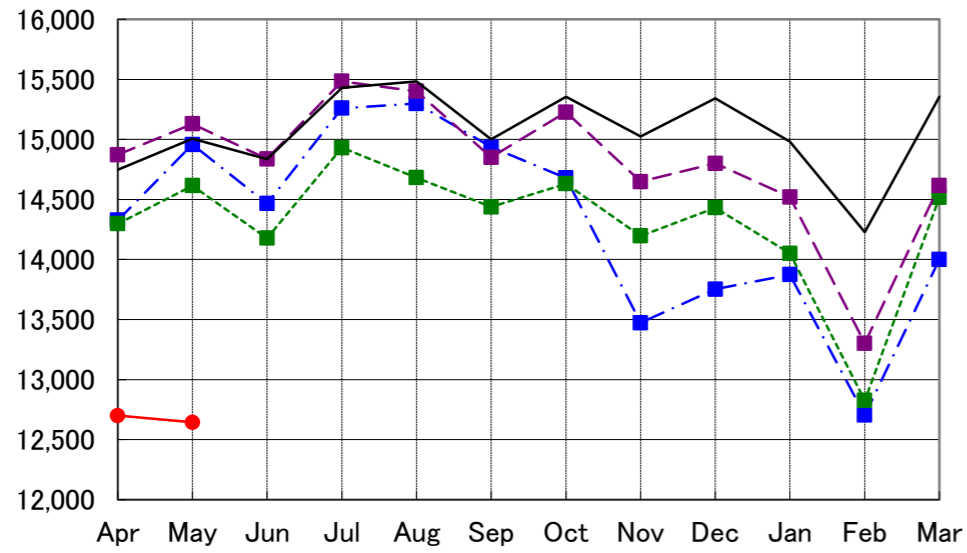
NARITA AIRPORT TRAFFIC STATISTICS -2011(JAN-DEC)

NARITA INTERNATIONAL AIRPORT CORPORATION

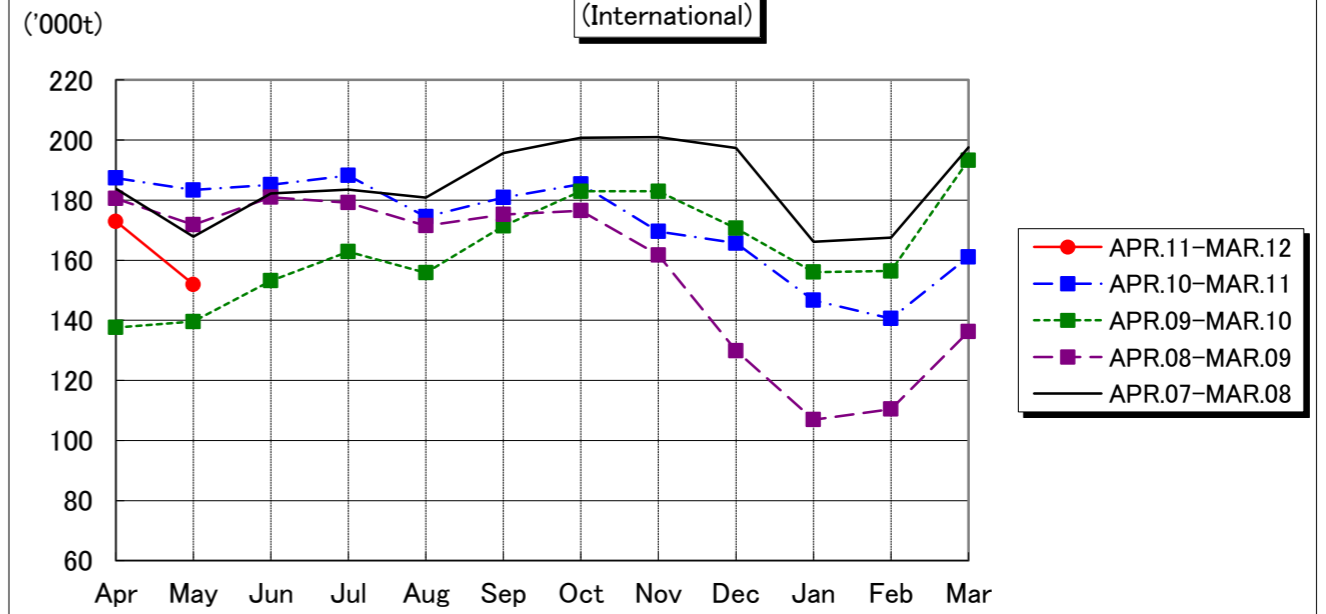
MONTH DESCRIPTION	AGGREGATE 21-May-78~ 31-Dec-10	2011												TOTAL	AVERAGE PER DAY	AGGREGATE 21-May-78 31-Dec-11	
		ACTUAL			PROV.		JUN	JUL	AUG	SEP	OCT	NOV	DEC				
		JAN	FEB	MAR	APR	MAY											
AIRCRAFT MOVEMENTS	4,061,653	15,690	14,340	15,545	14,279	14,232									74,086	617	4,135,739
		(101)	(101)	(97)	(91)	(86)									(95)		
International	3,828,352	13,873	12,703	14,000	12,699	12,644									65,919	549	3,894,271
		(99)	(99)	(96)	(89)	(85)									(93)		
PAX Flight	3,170,892	12,155	11,037	11,892	10,533	10,818									56,435	470	3,227,327
		(99)	(99)	(96)	(87)	(84)									(93)		
Cargo Flight	591,859	1,609	1,509	1,840	2,031	1,716									8,705	73	600,564
		(103)	(100)	(97)	(105)	(92)									(99)		
Others	65,601	109	157	268	135	110									779	6	66,380
		(67)	(78)	(136)	(63)	(57)									(80)		
Domestic	233,301	1,817	1,637	1,545	1,580	1,588									8,167	68	241,468
		(125)	(123)	(107)	(109)	(104)									(114)		
PAX Flight	217,695	1,785	1,624	1,516	1,556	1,550									8,031	67	225,726
		(126)	(126)	(107)	(109)	(104)									(114)		
Others	15,606	32	13	29	24	38									136	1	15,742
		(114)	(31)	(138)	(150)	(106)									(95)		
TERMINAL PASSENGERS	768,804,427	2,513,862	2,365,919	2,175,406	1,672,833	2,008,203									10,736,223	89,469	779,540,650
		(92)	(91)	(71)	(62)	(72)									(77)		
International	741,501,435	2,370,536	2,233,800	2,043,888	1,569,720	1,888,050									10,105,994	84,217	751,607,429
		(91)	(90)	(70)	(61)	(71)									(76)		
Japanese	426,996,349	1,216,128	1,232,871	1,185,056	896,253	1,054,065									5,584,373	46,536	432,580,722
		(91)	(93)	(71)	(74)	(77)									(81)		
Non-Japanese	167,314,388	641,908	610,381	494,326	321,625	344,791									2,413,031	20,109	169,727,419
		(96)	(89)	(66)	(37)	(48)									(66)		
Transit	147,190,698	512,500	390,548	364,506	351,842	489,194									2,108,590	17,572	149,299,288
		(84)	(82)	(73)	(72)	(84)									(80)		
Domestic	27,302,992	143,326	132,119	131,518	103,113	120,153									630,229	5,252	27,933,221
		(119)	(116)	(98)	(86)	(88)									(101)		
CARGO (t)	46,274,929	146,658	140,608	161,119	172,905	151,969									773,259	5,121	46,896,219
		(94)	(90)	(83)	(92)	(83)									(88)		
Loaded	21,619,080	67,943	65,786	72,815	78,610	71,783									356,937	2,364	21,904,234
		(92)	(89)	(82)	(90)	(81)									(87)		
Export	15,801,850	54,079	54,722	57,196	62,749	57,211									285,957	1,894	16,030,596
		(97)	(97)	(86)	(95)	(86)									(92)		
Transit	5,817,230	13,864	11,064	15,619	15,861	14,572									70,980	470	5,873,638
		(75)	(63)	(72)	(74)	(66)									(70)		
Unloaded	24,655,849	78,715	74,822	88,304	94,295	80,186									416,322	2,757	24,991,985
		(96)	(91)	(84)	(94)	(85)									(90)		
Import	18,982,974	65,310	64,336	72,942	78,800	66,991									348,379	2,307	19,264,362
		(102)	(98)	(87)	(99)	(90)									(95)		
Transit	5,672,875	13,405	10,486	15,362	15,495	13,195									67,943	450	5,727,623
		(74)	(62)	(74)	(76)	(64)									(70)		
FUEL SUPPLIED TO AIRCRAFT (kl)	138,761,730	392,111	345,238	317,266	307,450	332,064									1,694,129	14,118	140,455,859
		(98)	(95)	(78)	(78)	(81)									(86)		

NOTE : ()% ; Changes from the same month of previous year.

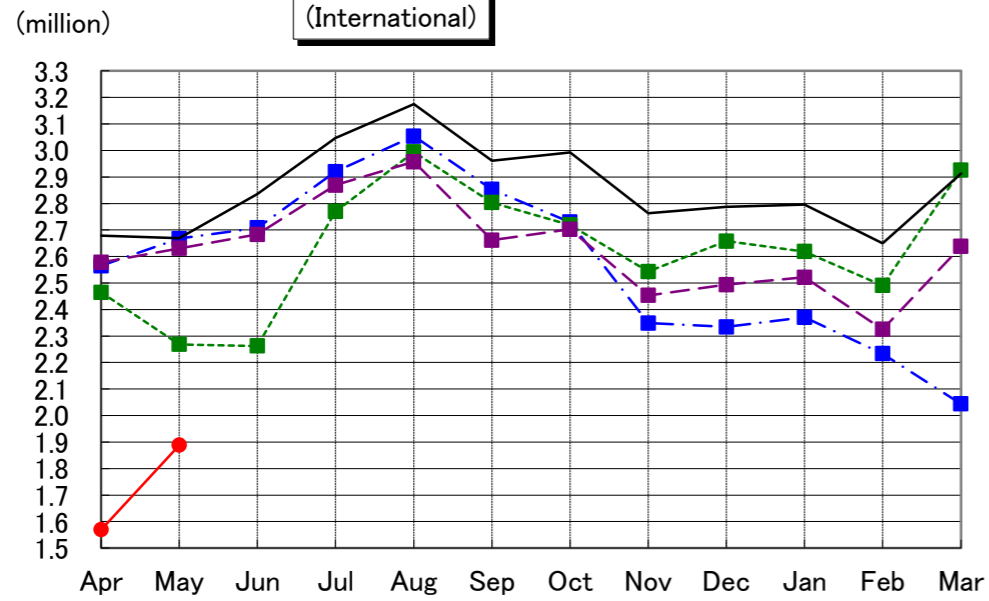
AIRCRAFT MOVEMENTS
(International)



CARGO
(International)



PASSENGERS
(International)



AVIATION FUEL SUPPLIED

