

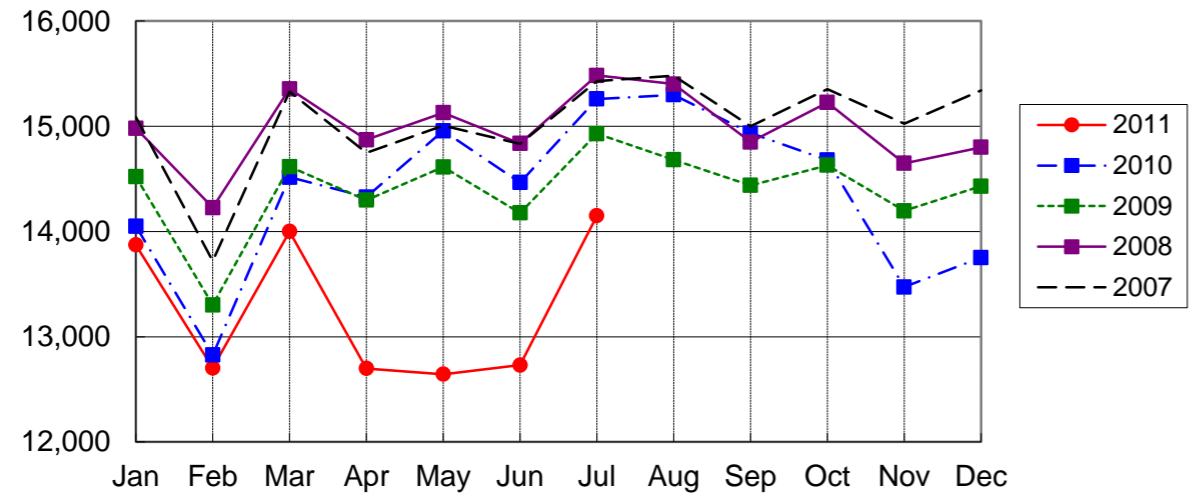
NARITA AIRPORT TRAFFIC STATISTICS -2011(JAN-DEC)

NARITA INTERNATIONAL AIRPORT CORPORATION

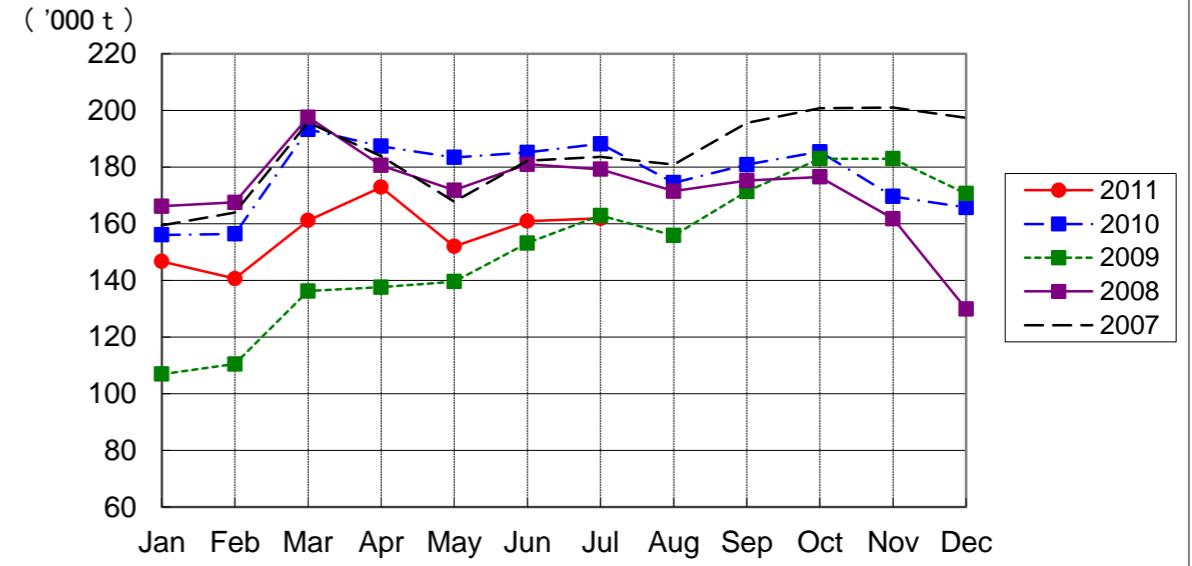
MONTH DESCRIPTION	AGGREGATE 21-May-78~ 31-Dec-10	2011												TOTAL	AVERAGE PER DAY	AGGREGATE 21-May-78 31-Dec-11	
		ACTUAL					PROV.		AUG	SEP	OCT	NOV	DEC				
		JAN	FEB	MAR	APR	MAY	JUN	JUL									
<b>AIRCRAFT MOVEMENTS</b>	4,061,653	15,690	14,340	15,545	14,279	14,232	14,265	15,817							88,351	488	4,150,004
		(101)	(101)	(97)	(91)	(86)	(89)	(94)							(94)		
International	3,828,352	13,873	12,703	14,000	12,699	12,644	12,730	14,150							78,649	435	3,907,001
		(99)	(99)	(96)	(89)	(85)	(88)	(93)							(92)		
PAX Flight	3,170,892	12,155	11,037	11,892	10,533	10,818	10,678	12,068							67,113	371	3,238,005
		(99)	(99)	(96)	(87)	(84)	(87)	(92)							(92)		
Cargo Flight	591,859	1,609	1,509	1,840	2,031	1,716	1,952	1,970							10,657	59	602,516
		(103)	(100)	(97)	(105)	(92)	(100)	(97)							(99)		
Others	65,601	109	157	268	135	110	100	112							879	5	66,480
		(67)	(78)	(136)	(63)	(57)	(55)	(71)							(76)		
Domestic	233,301	1,817	1,637	1,545	1,580	1,588	1,535	1,667							9,702	54	243,003
		(125)	(123)	(107)	(109)	(104)	(103)	(102)							(112)		
PAX Flight	217,695	1,785	1,624	1,516	1,556	1,550	1,500	1,637							9,531	53	227,226
		(126)	(126)	(107)	(109)	(104)	(104)	(102)							(112)		
Others	15,606	32	13	29	24	38	35	30							171	1	15,777
		(114)	(31)	(138)	(150)	(106)	(63)	(103)							(86)		
<b>TERMINAL PASSENGERS</b>	768,804,427	2,513,862	2,365,919	2,175,406	1,672,833	2,008,203	2,155,387	2,503,424							12,891,610	71,224	781,696,037
		(92)	(91)	(71)	(62)	(72)	(76)	(82)							(77)		
International	741,501,435	2,370,536	2,233,800	2,043,888	1,569,720	1,888,050	2,028,093	2,361,141							12,134,087	67,039	753,635,522
		(91)	(90)	(70)	(61)	(71)	(75)	(81)							(76)		
Japanese	426,996,349	1,216,128	1,232,871	1,185,056	896,253	1,054,065	1,097,614	1,306,013							6,681,987	36,917	433,678,336
		(91)	(93)	(71)	(74)	(77)	(78)	(86)							(80)		
Non-Japanese	167,314,388	641,908	610,381	494,326	321,625	344,791	393,523	507,654							2,806,554	15,506	170,120,942
		(96)	(89)	(66)	(37)	(48)	(55)	(58)							(64)		
Transit	147,190,698	512,500	390,548	364,506	351,842	489,194	536,956	547,474							2,645,546	14,616	149,836,244
		(84)	(82)	(73)	(72)	(84)	(91)	(105)							(82)		
Domestic	27,302,992	143,326	132,119	131,518	103,113	120,153	127,294	142,283							757,523	4,185	28,060,515
		(119)	(116)	(98)	(86)	(88)	(91)	(95)							(99)		
<b>CARGO ( t )</b>	46,274,929	146,658	140,608	161,119	172,905	151,969	160,920	161,880							934,179	5,161	47,209,108
		(94)	(90)	(83)	(92)	(83)	(87)	(86)							(88)		
Loaded	21,619,080	67,943	65,786	72,815	78,610	71,783	77,479	72,485							434,416	2,400	22,053,496
		(92)	(89)	(82)	(90)	(81)	(85)	(81)							(86)		
Export	15,801,850	54,079	54,722	57,196	62,749	57,211	62,972	58,713							348,929	1,928	16,150,779
		(97)	(97)	(86)	(95)	(86)	(89)	(86)							(91)		
Transit	5,817,230	13,864	11,064	15,619	15,861	14,572	14,507	13,772							85,487	472	5,902,717
		(75)	(63)	(72)	(74)	(66)	(71)	(63)							(71)		
Unloaded	24,655,849	78,715	74,822	88,304	94,295	80,186	83,441	89,395							499,763	2,761	25,155,612
		(96)	(91)	(84)	(94)	(85)	(89)	(91)							(90)		
Import	18,982,974	65,310	64,336	72,942	78,800	66,991	69,378	75,419							417,757	2,308	19,400,731
		(102)	(98)	(87)	(99)	(90)	(92)	(97)							(94)		
Transit	5,672,875	13,405	10,486	15,362	15,495	13,195	14,063	13,976							82,006	453	5,754,881
		(74)	(62)	(74)	(76)	(64)	(75)	(67)							(71)		
<b>FUEL SUPPLIED TO AIRCRAFT ( kl )</b>	138,761,730	392,111	345,238	317,266	307,450	332,064	338,187	360,231							2,032,316	11,228	140,794,046
		(98)	(95)	(78)	(78)	(81)	(84)	(85)							(86)		

NOTE : ( )% ; Changes from the same month of previous year.

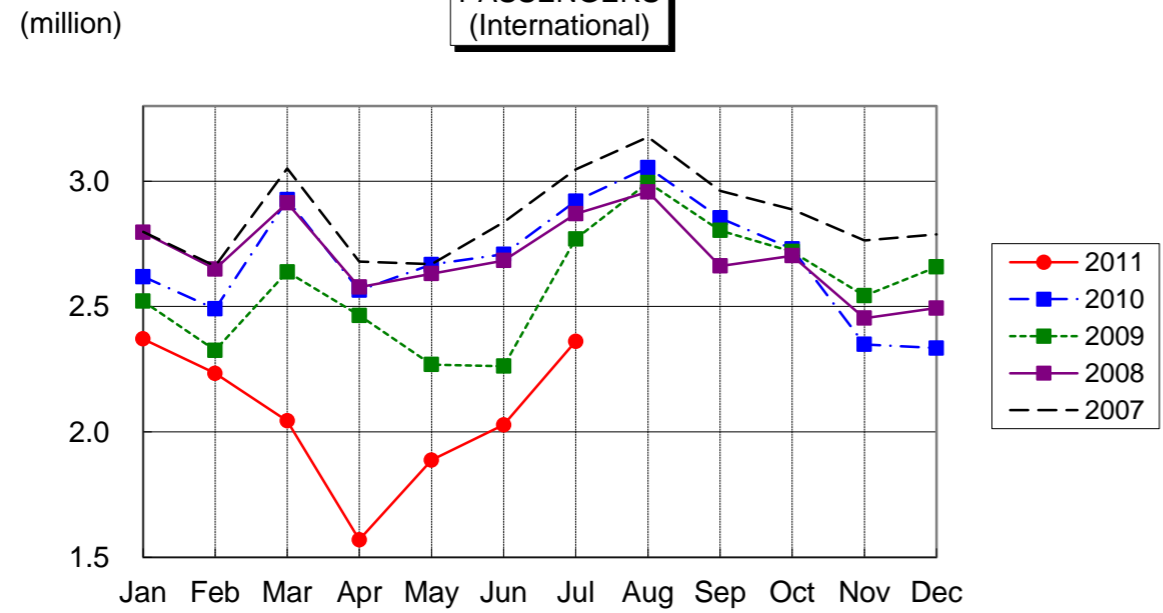
**AIRCRAFT MOVEMENTS**  
(International)



**CARGO**  
(International)



**PASSENGERS**  
(International)



**AVIATION FUEL SUPPLIED**

