

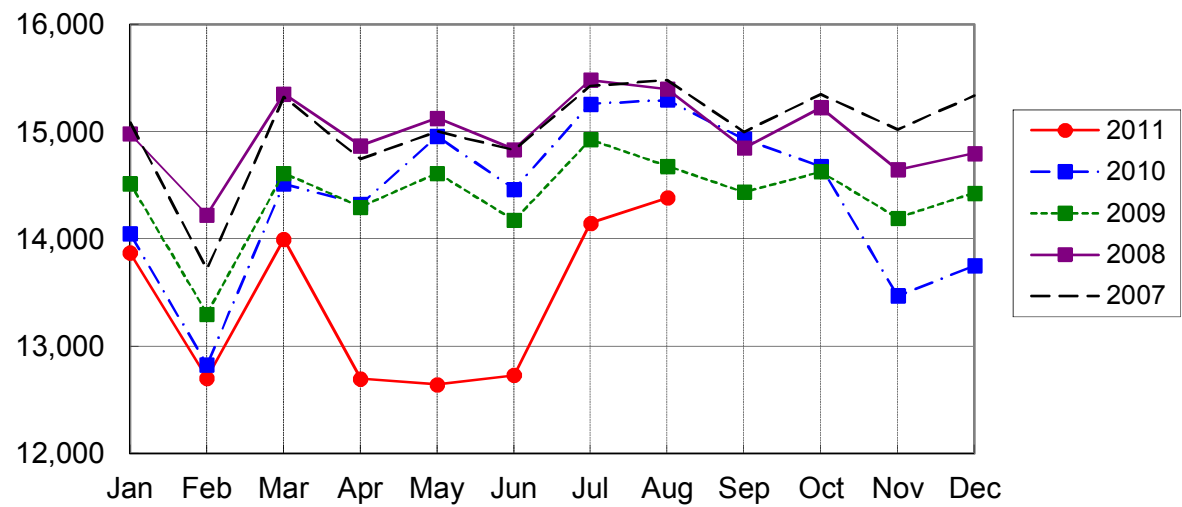
NARITA AIRPORT TRAFFIC STATISTICS -2011(JAN-DEC)

NARITA INTERNATIONAL AIRPORT CORPORATION

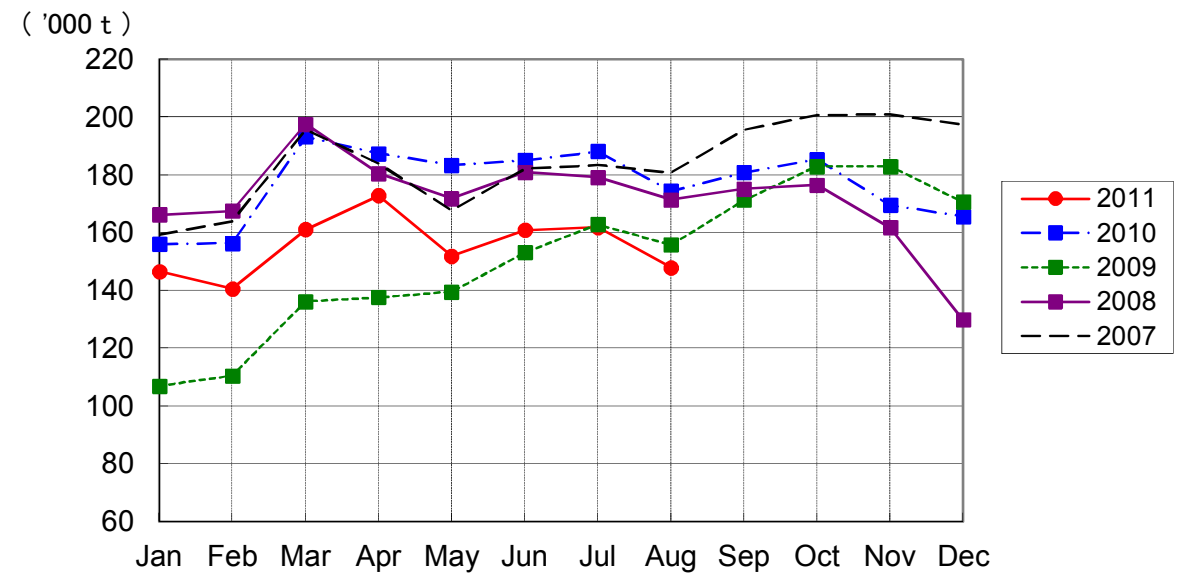
MONTH DESCRIPTION	AGGREGATE 21-May-78~ 31-Dec-10	2011												TOTAL	AVERAGE PER DAY	AGGREGATE 21-May-78 31-Dec-11
		ACTUAL						PROV.								
		JAN	FEB	MAR	APR	MAY	JUN	JUL	AUG	SEP	OCT	NOV	DEC			
AIRCRAFT MOVEMENTS	4,061,653	15,690	14,340	15,545	14,279	14,232	14,265	15,817	16,191					120,359	495	4,182,012
		(101)	(101)	(97)	(91)	(86)	(89)	(94)	(95)					(94)		
International	3,828,352	13,873	12,703	14,000	12,699	12,644	12,730	14,150	14,386					107,185	441	3,935,537
		(99)	(99)	(96)	(89)	(85)	(88)	(93)	(94)					(93)		
PAX Flight	3,170,892	12,155	11,037	11,892	10,533	10,818	10,678	12,068	12,431					91,612	377	3,262,504
		(99)	(99)	(96)	(87)	(84)	(87)	(92)	(94)					(92)		
Cargo Flight	591,859	1,609	1,509	1,840	2,031	1,716	1,952	1,970	1,797					14,424	59	606,283
		(103)	(100)	(97)	(105)	(92)	(100)	(97)	(96)					(99)		
Others	65,601	109	157	268	135	110	100	112	158					1,149	5	66,750
		(67)	(78)	(136)	(63)	(57)	(55)	(71)	(87)					(77)		
Domestic	233,301	1,817	1,637	1,545	1,580	1,588	1,535	1,667	1,805					13,174	54	246,475
		(125)	(123)	(107)	(109)	(104)	(103)	(102)	(106)					(110)		
PAX Flight	217,695	1,785	1,624	1,516	1,556	1,550	1,500	1,637	1,781					12,949	53	230,644
		(126)	(126)	(107)	(109)	(104)	(104)	(102)	(106)					(110)		
Others	15,606	32	13	29	24	38	35	30	24					225	1	15,831
		(114)	(31)	(138)	(150)	(106)	(63)	(103)	(109)					(90)		
TERMINAL PASSENGERS	768,804,427	2,513,862	2,365,919	2,175,406	1,672,833	2,008,203	2,155,387	2,503,424	2,808,815					18,203,849	74,913	787,008,276
		(92)	(91)	(71)	(62)	(72)	(76)	(82)	(87)					(79)		
International	741,501,435	2,370,536	2,233,800	2,043,888	1,569,720	1,888,050	2,028,093	2,361,141	2,639,635					17,134,863	70,514	758,636,298
		(91)	(90)	(70)	(61)	(71)	(75)	(81)	(86)					(78)		
Japanese	426,996,349	1,216,128	1,232,871	1,185,056	896,253	1,054,065	1,097,614	1,306,013	1,645,825					9,633,825	39,645	436,630,174
		(91)	(93)	(71)	(74)	(77)	(78)	(86)	(92)					(83)		
Non-Japanese	167,314,388	641,908	610,381	494,326	321,625	344,791	393,523	507,654	516,230					3,830,438	15,763	171,144,826
		(96)	(89)	(66)	(37)	(48)	(55)	(58)	(64)					(63)		
Transit	147,190,698	512,500	390,548	364,506	351,842	489,194	536,956	547,474	477,580					3,670,600	15,105	150,861,298
		(84)	(82)	(73)	(72)	(84)	(91)	(105)	(102)					(87)		
Domestic	27,302,992	143,326	132,119	131,518	103,113	120,153	127,294	142,283	169,180					1,068,986	4,399	28,371,978
		(119)	(116)	(98)	(86)	(88)	(91)	(95)	(108)					(100)		
CARGO (t)	46,274,929	146,658	140,608	161,119	172,905	151,969	160,920	161,880	147,939					1,243,998	5,119	47,518,927
		(94)	(90)	(83)	(92)	(83)	(87)	(86)	(85)					(87)		
Loaded	21,619,080	67,943	65,786	72,815	78,610	71,783	77,479	72,485	64,577					571,478	2,352	22,190,558
		(92)	(89)	(82)	(90)	(81)	(85)	(81)	(80)					(85)		
Export	15,801,850	54,079	54,722	57,196	62,749	57,211	62,972	58,713	50,258					457,900	1,884	16,259,750
		(97)	(97)	(86)	(95)	(86)	(89)	(86)	(83)					(90)		
Transit	5,817,230	13,864	11,064	15,619	15,861	14,572	14,507	13,772	14,319					113,578	467	5,930,808
		(75)	(63)	(72)	(74)	(66)	(71)	(63)	(70)					(70)		
Unloaded	24,655,849	78,715	74,822	88,304	94,295	80,186	83,441	89,395	83,362					672,520	2,768	25,328,369
		(96)	(91)	(84)	(94)	(85)	(89)	(91)	(89)					(90)		
Import	18,982,974	65,310	64,336	72,942	78,800	66,991	69,378	75,419	69,619					562,795	2,316	19,545,769
		(102)	(98)	(87)	(99)	(90)	(92)	(97)	(94)					(95)		
Transit	5,672,875	13,405	10,486	15,362	15,495	13,195	14,063	13,976	13,743					109,725	452	5,782,600
		(74)	(62)	(74)	(76)	(64)	(75)	(67)	(73)					(71)		
FUEL SUPPLIED TO AIRCRAFT (kl)	138,761,730	392,111	345,238	317,266	307,450	332,064	338,187	360,231	365,478					2,758,025	11,350	141,519,755
		(98)	(95)	(78)	(78)	(81)	(84)	(85)	(86)					(86)		

NOTE : ()% ; Changes from the same month of previous year.

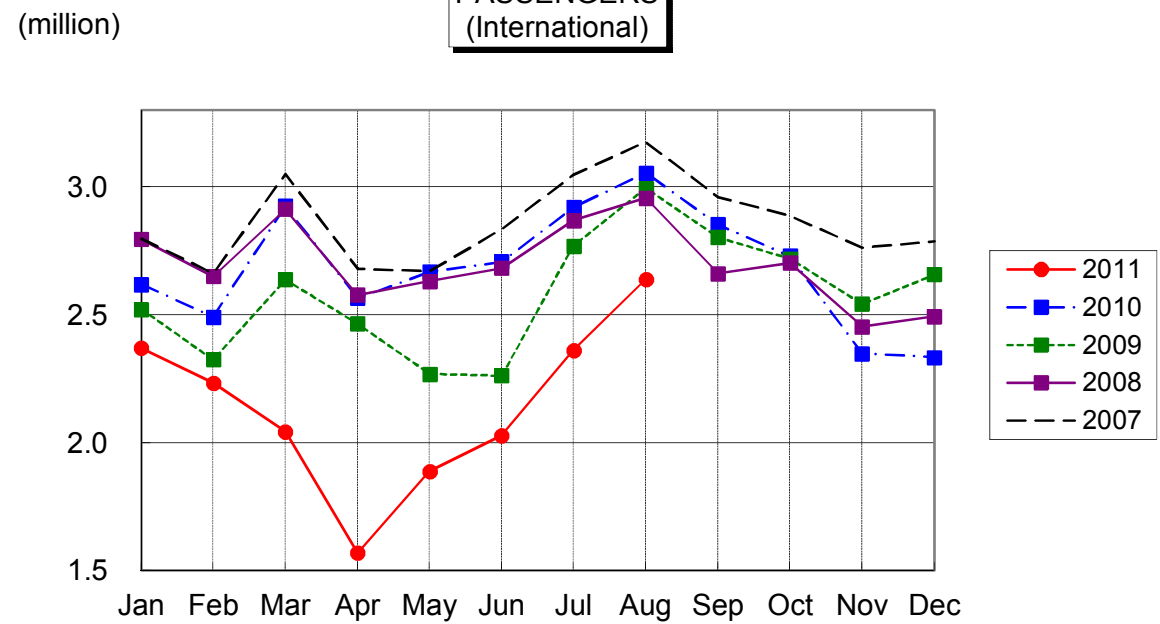
AIRCRAFT MOVEMENTS
(International)



CARGO
(International)



PASSENGERS
(International)



AVIATION FUEL SUPPLIED

