

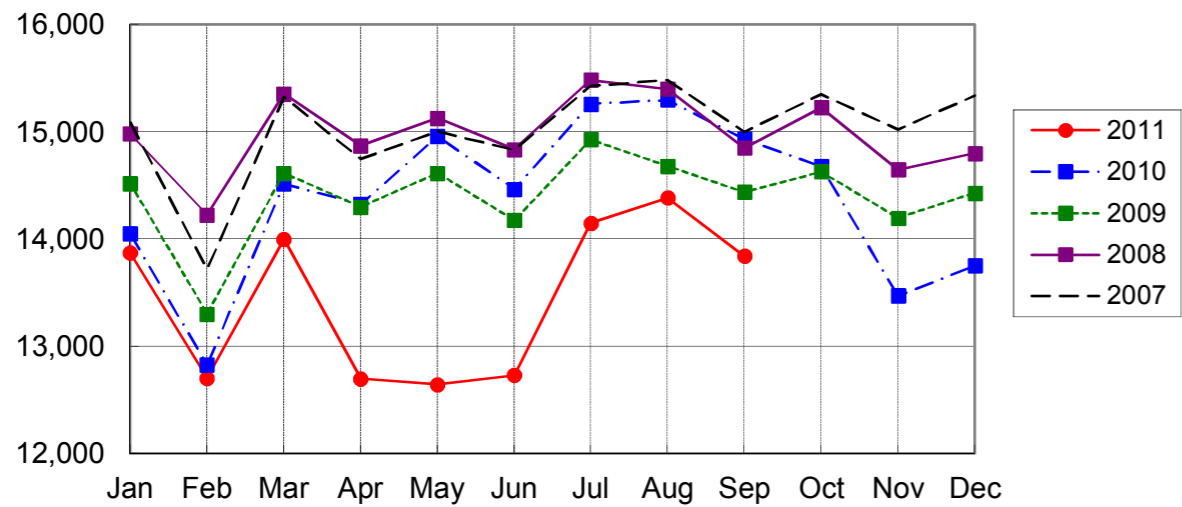
**NARITA AIRPORT TRAFFIC STATISTICS -2011(JAN-DEC)**

NARITA INTERNATIONAL AIRPORT CORPORATION

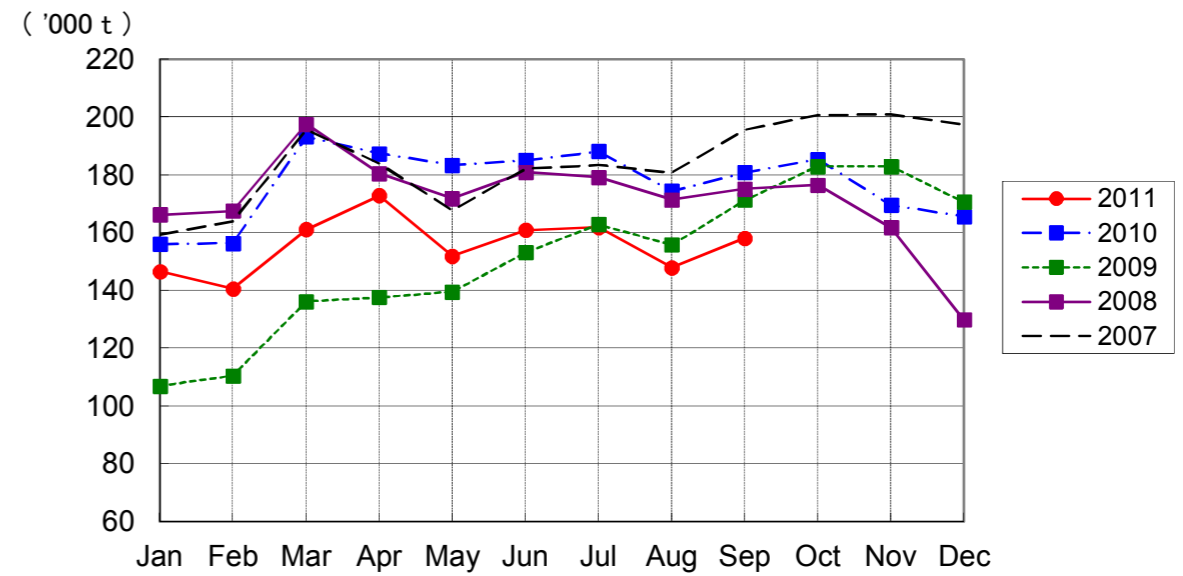
MONTH DESCRIPTION	AGGREGATE 21-May-78~ 31-Dec-10	2011												TOTAL	AVERAGE PER DAY	AGGREGATE 21-May-78 31-Dec-11
		ACTUAL						PROV.								
		JAN	FEB	MAR	APR	MAY	JUN	JUL	AUG	SEP	OCT	NOV	DEC			
<b>AIRCRAFT MOVEMENTS</b>	4,061,653	15,690	14,340	15,545	14,279	14,232	14,265	15,817	16,191	15,561				135,920	498	4,197,573
		(101)	(101)	(97)	(91)	(86)	(89)	(94)	(95)	(94)				(94)		
International	3,828,352	13,873	12,703	14,000	12,699	12,644	12,730	14,150	14,386	13,843				121,028	443	3,949,380
		(99)	(99)	(96)	(89)	(85)	(88)	(93)	(94)	(93)				(93)		
PAX Flight	3,170,892	12,155	11,037	11,892	10,533	10,818	10,678	12,068	12,431	11,813				103,425	379	3,274,317
		(99)	(99)	(96)	(87)	(84)	(87)	(92)	(94)	(92)				(92)		
Cargo Flight	591,859	1,609	1,509	1,840	2,031	1,716	1,952	1,970	1,797	1,879				16,303	60	608,162
		(103)	(100)	(97)	(105)	(92)	(100)	(97)	(96)	(100)				(99)		
Others	65,601	109	157	268	135	110	100	112	158	151				1,300	5	66,901
		(67)	(78)	(136)	(63)	(57)	(55)	(71)	(87)	(64)				(75)		
Domestic	233,301	1,817	1,637	1,545	1,580	1,588	1,535	1,667	1,805	1,718				14,892	55	248,193
		(125)	(123)	(107)	(109)	(104)	(103)	(102)	(106)	(105)				(109)		
PAX Flight	217,695	1,785	1,624	1,516	1,556	1,550	1,500	1,637	1,781	1,691				14,640	54	232,335
		(126)	(126)	(107)	(109)	(104)	(104)	(102)	(106)	(105)				(109)		
Others	15,606	32	13	29	24	38	35	30	24	27				252	1	15,858
		(114)	(31)	(138)	(150)	(106)	(63)	(103)	(109)	(123)				(93)		
<b>TERMINAL PASSENGERS</b>	768,804,427	2,513,862	2,365,919	2,175,406	1,672,833	2,008,203	2,155,387	2,503,424	2,808,815	2,548,859				20,752,708	76,017	789,557,135
		(92)	(91)	(71)	(62)	(72)	(76)	(82)	(87)	(85)				(80)		
International	741,501,435	2,370,536	2,233,800	2,043,888	1,569,720	1,888,050	2,028,093	2,361,141	2,639,635	2,400,240				19,535,103	71,557	761,036,538
		(91)	(90)	(70)	(61)	(71)	(75)	(81)	(86)	(84)				(79)		
Japanese	426,996,349	1,216,128	1,232,871	1,185,056	896,253	1,054,065	1,097,614	1,306,013	1,645,825	1,552,309				11,186,134	40,975	438,182,483
		(91)	(93)	(71)	(74)	(77)	(78)	(86)	(92)	(91)				(84)		
Non-Japanese	167,314,388	641,908	610,381	494,326	321,625	344,791	393,523	507,654	516,230	488,891				4,319,329	15,822	171,633,717
		(96)	(89)	(66)	(37)	(48)	(55)	(58)	(64)	(69)				(64)		
Transit	147,190,698	512,500	390,548	364,506	351,842	489,194	536,956	547,474	477,580	359,040				4,029,640	14,761	151,220,338
		(84)	(82)	(73)	(72)	(84)	(91)	(105)	(102)	(84)				(86)		
Domestic	27,302,992	143,326	132,119	131,518	103,113	120,153	127,294	142,283	169,180	148,619				1,217,605	4,460	28,520,597
		(119)	(116)	(98)	(86)	(88)	(91)	(95)	(108)	(102)				(100)		
<b>CARGO ( t )</b>	46,274,929	146,658	140,608	161,119	172,905	151,969	160,920	161,880	147,939	158,165				1,402,163	5,136	47,677,092
		(94)	(90)	(83)	(92)	(83)	(87)	(86)	(85)	(87)				(87)		
Loaded	21,619,080	67,943	65,786	72,815	78,610	71,783	77,479	72,485	64,577	69,979				641,457	2,350	22,260,537
		(92)	(89)	(82)	(90)	(81)	(85)	(81)	(80)	(81)				(84)		
Export	15,801,850	54,079	54,722	57,196	62,749	57,211	62,972	58,713	50,258	55,104				513,004	1,879	16,314,854
		(97)	(97)	(86)	(95)	(86)	(89)	(86)	(83)	(81)				(89)		
Transit	5,817,230	13,864	11,064	15,619	15,861	14,572	14,507	13,772	14,319	14,875				128,453	471	5,945,683
		(75)	(63)	(72)	(74)	(66)	(71)	(63)	(70)	(84)				(71)		
Unloaded	24,655,849	78,715	74,822	88,304	94,295	80,186	83,441	89,395	83,362	88,186				760,706	2,786	25,416,555
		(96)	(91)	(84)	(94)	(85)	(89)	(91)	(89)	(93)				(90)		
Import	18,982,974	65,310	64,336	72,942	78,800	66,991	69,378	75,419	69,619	73,699				636,494	2,331	19,619,468
		(102)	(98)	(87)	(99)	(90)	(92)	(97)	(94)	(95)				(95)		
Transit	5,672,875	13,405	10,486	15,362	15,495	13,195	14,063	13,976	13,743	14,487				124,212	455	5,797,087
		(74)	(62)	(74)	(76)	(64)	(75)	(67)	(73)	(85)				(72)		
<b>FUEL SUPPLIED TO AIRCRAFT ( kl )</b>	138,761,730	392,111	345,238	317,266	307,450	332,064	338,187	360,231	365,478	351,624				3,109,649	11,391	141,871,379
		(98)	(95)	(78)	(78)	(81)	(84)	(85)	(86)	(87)				(86)		

NOTE : ( )% ; Changes from the same month of previous year.

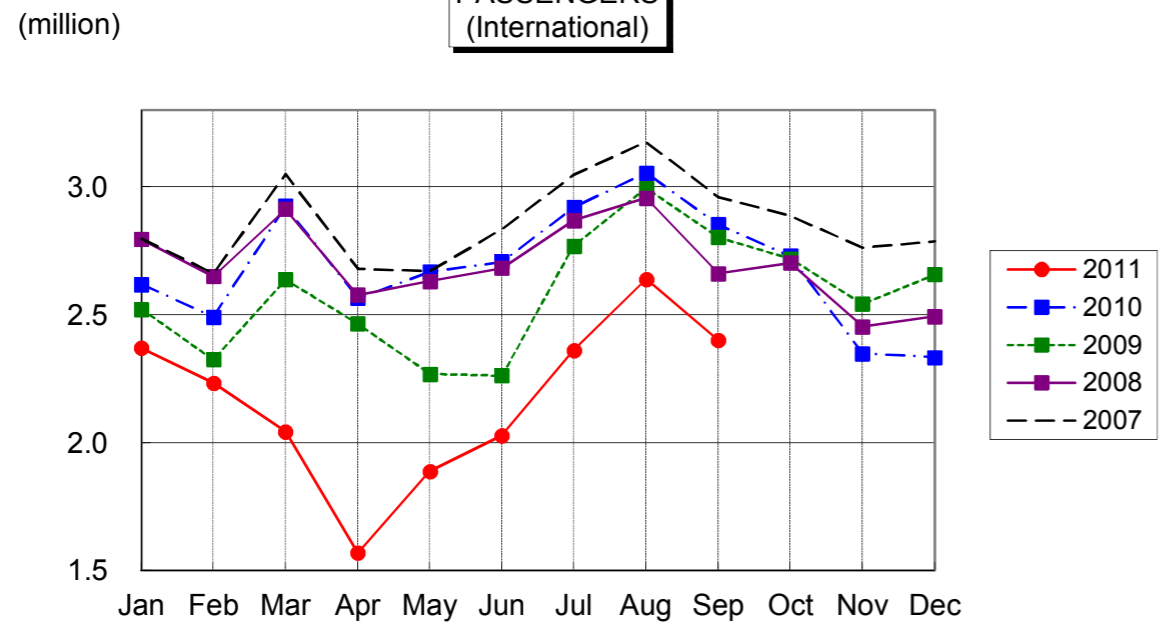
**AIRCRAFT MOVEMENTS**  
(International)



**CARGO**  
(International)



**PASSENGERS**  
(International)



**AVIATION FUEL SUPPLIED**

