

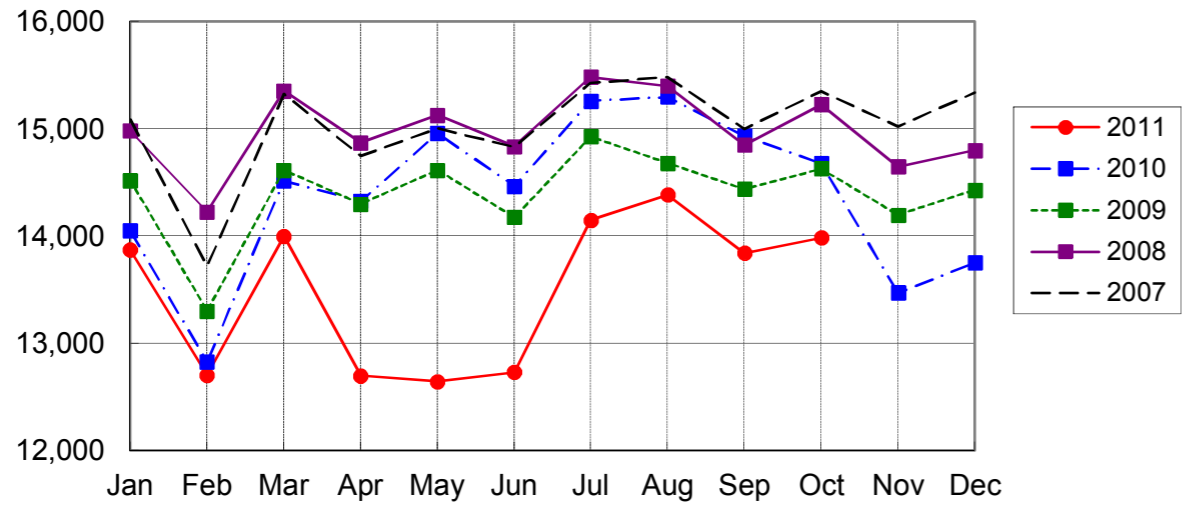
NARITA AIRPORT TRAFFIC STATISTICS -2011(JAN-DEC)

NARITA INTERNATIONAL AIRPORT CORPORATION

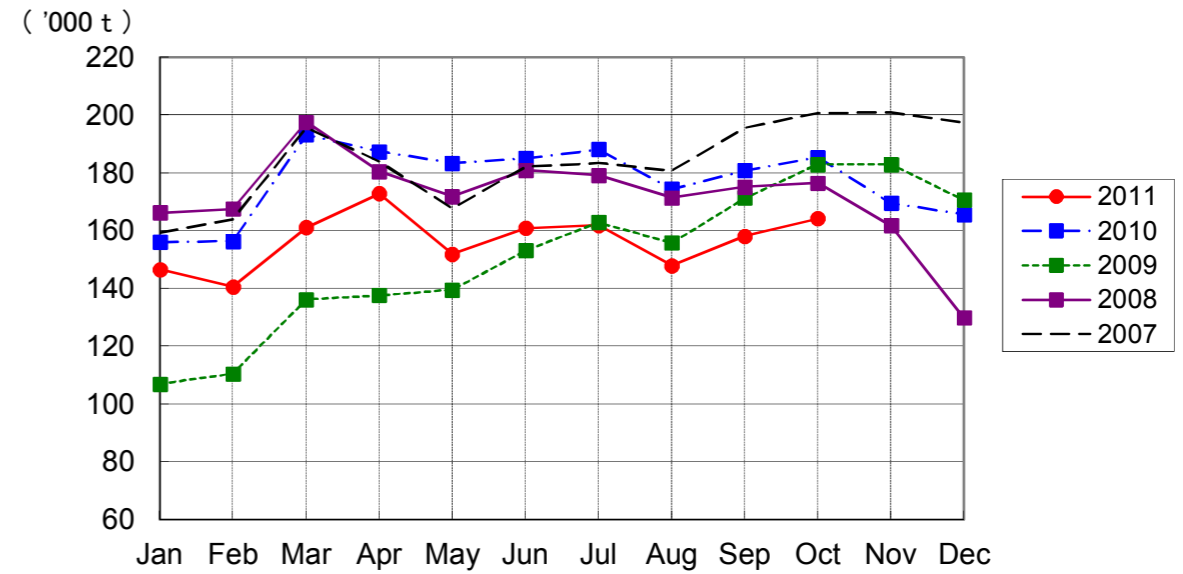
MONTH DESCRIPTION	AGGREGATE 21-May-78~ 31-Dec-10	2011												TOTAL	AVERAGE PER DAY	AGGREGATE 21-May-78 31-Dec-11
		ACTUAL						PROV.								
		JAN	FEB	MAR	APR	MAY	JUN	JUL	AUG	SEP	OCT	NOV	DEC			
AIRCRAFT MOVEMENTS	4,061,653	15,690	14,340	15,545	14,279	14,232	14,265	15,817	16,191	15,561	15,843			151,763	499	4,213,416
		(101)	(101)	(97)	(91)	(86)	(89)	(94)	(95)	(94)	(97)			(94)		
International	3,828,352	13,873	12,703	14,000	12,699	12,644	12,730	14,150	14,386	13,843	13,984			135,012	444	3,963,364
		(99)	(99)	(96)	(89)	(85)	(88)	(93)	(94)	(93)	(95)			(93)		
PAX Flight	3,170,892	12,155	11,037	11,892	10,533	10,818	10,678	12,068	12,431	11,813	11,972			115,397	380	3,286,289
		(99)	(99)	(96)	(87)	(84)	(87)	(92)	(94)	(92)	(95)			(92)		
Cargo Flight	591,859	1,609	1,509	1,840	2,031	1,716	1,952	1,970	1,797	1,879	1,858			18,161	60	610,020
		(103)	(100)	(97)	(105)	(92)	(100)	(97)	(96)	(100)	(100)			(99)		
Others	65,601	109	157	268	135	110	100	112	158	151	154			1,454	5	67,055
		(67)	(78)	(136)	(63)	(57)	(55)	(71)	(87)	(64)	(66)			(74)		
Domestic	233,301	1,817	1,637	1,545	1,580	1,588	1,535	1,667	1,805	1,718	1,859			16,751	55	250,052
		(125)	(123)	(107)	(109)	(104)	(103)	(102)	(106)	(105)	(109)			(109)		
PAX Flight	217,695	1,785	1,624	1,516	1,556	1,550	1,500	1,637	1,781	1,691	1,819			16,459	54	234,154
		(126)	(126)	(107)	(109)	(104)	(104)	(102)	(106)	(105)	(109)			(109)		
Others	15,606	32	13	29	24	38	35	30	24	27	40			292	1	15,898
		(114)	(31)	(138)	(150)	(106)	(63)	(103)	(109)	(123)	(154)			(98)		
TERMINAL PASSENGERS	768,804,427	2,513,862	2,365,919	2,175,406	1,672,833	2,008,203	2,155,387	2,503,424	2,808,815	2,548,859	2,481,836			23,234,544	76,429	792,038,971
		(92)	(91)	(71)	(62)	(72)	(76)	(82)	(87)	(85)	(86)			(80)		
International	741,501,435	2,370,536	2,233,800	2,043,888	1,569,720	1,888,050	2,028,093	2,361,141	2,639,635	2,400,240	2,321,020			21,856,123	71,895	763,357,558
		(91)	(90)	(70)	(61)	(71)	(75)	(81)	(86)	(84)	(85)			(79)		
Japanese	426,996,349	1,216,128	1,232,871	1,185,056	896,253	1,054,065	1,097,614	1,306,013	1,645,825	1,552,309	1,360,614			12,546,748	41,272	439,543,097
		(91)	(93)	(71)	(74)	(77)	(78)	(86)	(92)	(91)	(90)			(84)		
Non-Japanese	167,314,388	641,908	610,381	494,326	321,625	344,791	393,523	507,654	516,230	488,891	555,956			4,875,285	16,037	172,189,673
		(96)	(89)	(66)	(37)	(48)	(55)	(58)	(64)	(69)	(75)			(65)		
Transit	147,190,698	512,500	390,548	364,506	351,842	489,194	536,956	547,474	477,580	359,040	404,450			4,434,090	14,586	151,624,788
		(84)	(82)	(73)	(72)	(84)	(91)	(105)	(102)	(84)	(87)			(87)		
Domestic	27,302,992	143,326	132,119	131,518	103,113	120,153	127,294	142,283	169,180	148,619	160,816			1,378,421	4,534	28,681,413
		(119)	(116)	(98)	(86)	(88)	(91)	(95)	(108)	(102)	(108)			(101)		
CARGO (t)	46,274,929	146,658	140,608	161,119	172,905	151,969	160,920	161,880	147,939	158,165	164,233			1,566,396	5,153	47,841,325
		(94)	(90)	(83)	(92)	(83)	(87)	(86)	(85)	(87)	(89)			(87)		
Loaded	21,619,080	67,943	65,786	72,815	78,610	71,783	77,479	72,485	64,577	69,979	72,196			713,653	2,348	22,332,733
		(92)	(89)	(82)	(90)	(81)	(85)	(81)	(80)	(81)	(84)			(84)		
Export	15,801,850	54,079	54,722	57,196	62,749	57,211	62,972	58,713	50,258	55,104	56,014			569,018	1,872	16,370,868
		(97)	(97)	(86)	(95)	(86)	(89)	(86)	(83)	(81)	(82)			(88)		
Transit	5,817,230	13,864	11,064	15,619	15,861	14,572	14,507	13,772	14,319	14,875	16,182			144,635	476	5,961,865
		(75)	(63)	(72)	(74)	(66)	(71)	(63)	(70)	(84)	(91)			(73)		
Unloaded	24,655,849	78,715	74,822	88,304	94,295	80,186	83,441	89,395	83,362	88,186	92,037			852,743	2,805	25,508,592
		(96)	(91)	(84)	(94)	(85)	(89)	(91)	(89)	(93)	(93)			(90)		
Import	18,982,974	65,310	64,336	72,942	78,800	66,991	69,378	75,419	69,619	73,699	76,326			712,820	2,345	19,695,794
		(102)	(98)	(87)	(99)	(90)	(92)	(97)	(94)	(95)	(94)			(95)		
Transit	5,672,875	13,405	10,486	15,362	15,495	13,195	14,063	13,976	13,743	14,487	15,711			139,923	460	5,812,798
		(74)	(62)	(74)	(76)	(64)	(75)	(67)	(73)	(85)	(90)			(74)		
FUEL SUPPLIED TO AIRCRAFT (kl)	138,761,730	392,111	345,238	317,266	307,450	332,064	338,187	360,231	365,478	351,624	363,731			3,473,380	11,426	142,235,110
		(98)	(95)	(78)	(78)	(81)	(84)	(85)	(86)	(87)	(91)			(86)		

NOTE : ()% ; Changes from the same month of previous year.

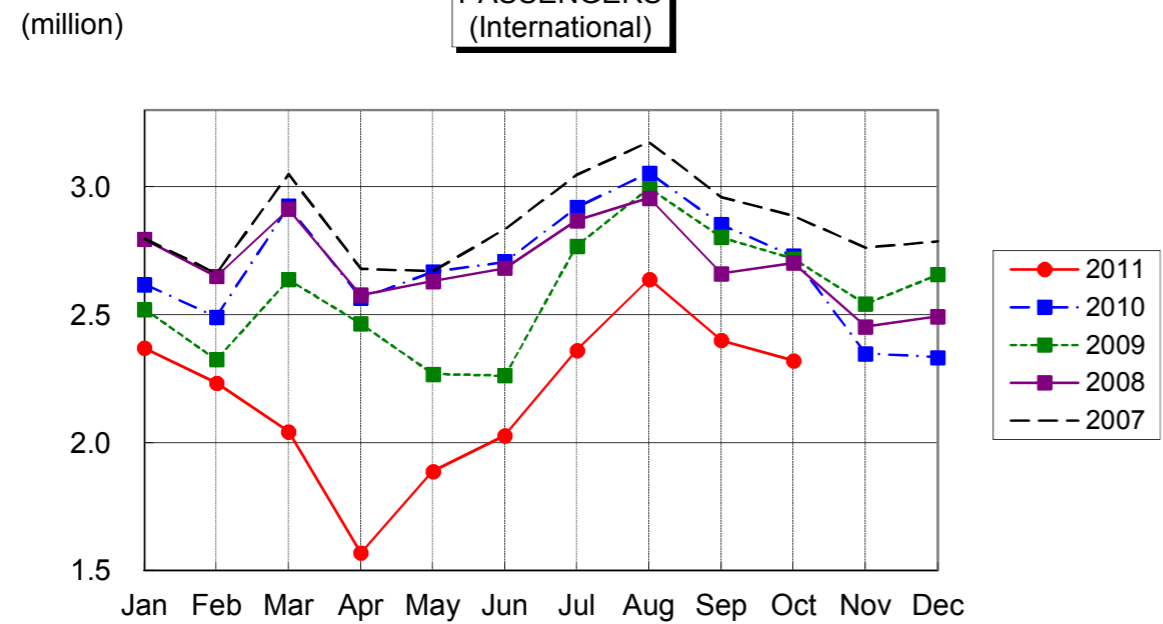
AIRCRAFT MOVEMENTS
(International)



CARGO
(International)



PASSENGERS
(International)



AVIATION FUEL SUPPLIED

