

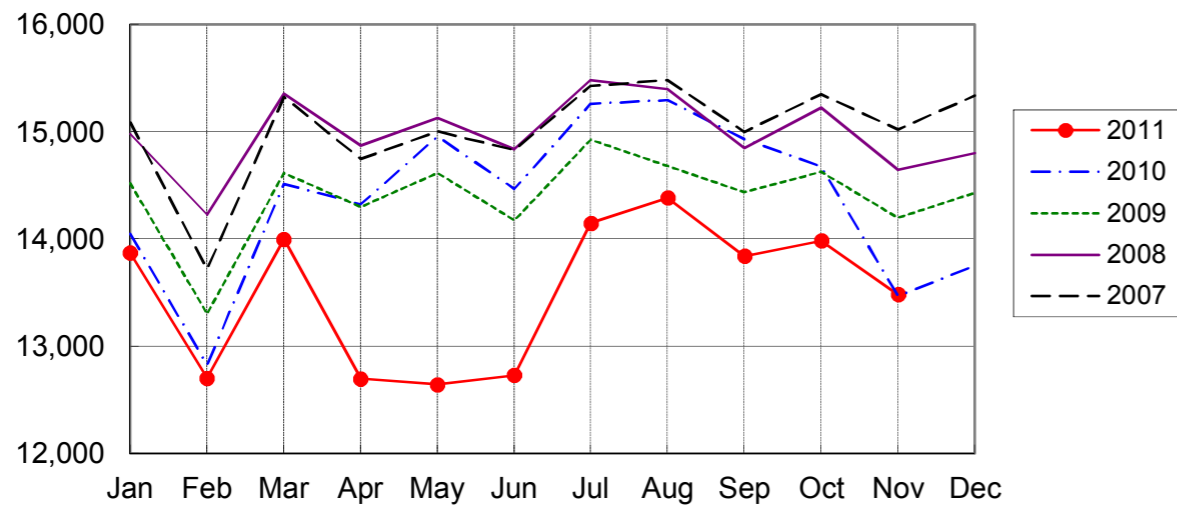
NARITA AIRPORT TRAFFIC STATISTICS -2011(JAN-DEC)

NARITA INTERNATIONAL AIRPORT CORPORATION

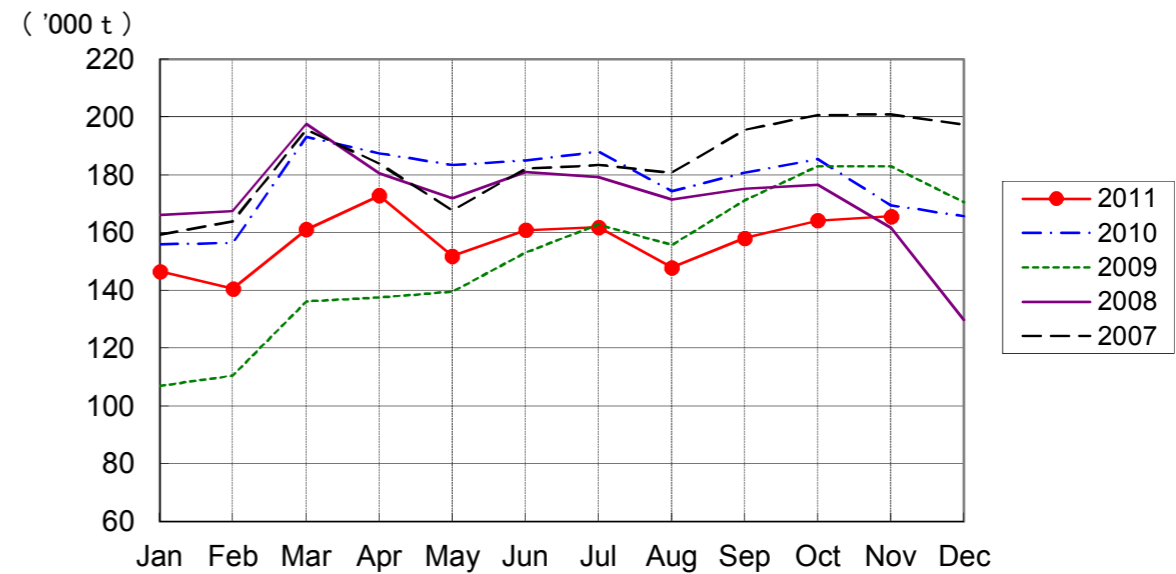
| MONTH DESCRIPTION | AGGREGATE 21-May-78~ 31-Dec-10 | 2011 | | | | | | | | | | | | TOTAL | AVERAGE PER DAY | AGGREGATE 21-May-78 31-Dec-11 |
|---|--------------------------------------|-----------|-----------|-----------|-----------|-----------|-----------|-----------|-----------|-----------|-----------|-----------|-----|------------|--------------------|-------------------------------------|
| | | ACTUAL | | | | | | | | | | PROV. | | | | |
| | | JAN | FEB | MAR | APR | MAY | JUN | JUL | AUG | SEP | OCT | NOV | DEC | | | |
| AIRCRAFT MOVEMENTS | 4,061,653 | 15,690 | 14,340 | 15,545 | 14,279 | 14,232 | 14,265 | 15,817 | 16,191 | 15,561 | 15,843 | 15,484 | | 167,247 | 501 | 4,228,900 |
| | | (101) | (101) | (97) | (91) | (86) | (89) | (94) | (95) | (94) | (97) | (102) | | (95) | | |
| International | 3,828,352 | 13,873 | 12,703 | 14,000 | 12,699 | 12,644 | 12,730 | 14,150 | 14,386 | 13,843 | 13,984 | 13,485 | | 148,497 | 445 | 3,976,849 |
| | | (99) | (99) | (96) | (89) | (85) | (88) | (93) | (94) | (93) | (95) | (100) | | (94) | | |
| PAX Flight | 3,170,892 | 12,155 | 11,037 | 11,892 | 10,533 | 10,818 | 10,678 | 12,068 | 12,431 | 11,813 | 11,972 | 11,438 | | 126,835 | 380 | 3,297,727 |
| | | (99) | (99) | (96) | (87) | (84) | (87) | (92) | (94) | (92) | (95) | (99) | | (93) | | |
| Cargo Flight | 591,859 | 1,609 | 1,509 | 1,840 | 2,031 | 1,716 | 1,952 | 1,970 | 1,797 | 1,879 | 1,858 | 1,953 | | 20,114 | 60 | 611,973 |
| | | (103) | (100) | (97) | (105) | (92) | (100) | (97) | (96) | (100) | (100) | (112) | | (100) | | |
| Others | 65,601 | 109 | 157 | 268 | 135 | 110 | 100 | 112 | 158 | 151 | 154 | 94 | | 1,548 | 5 | 67,149 |
| | | (67) | (78) | (136) | (63) | (57) | (55) | (71) | (87) | (64) | (66) | (51) | | (72) | | |
| Domestic | 233,301 | 1,817 | 1,637 | 1,545 | 1,580 | 1,588 | 1,535 | 1,667 | 1,805 | 1,718 | 1,859 | 1,999 | | 18,750 | 56 | 252,051 |
| | | (125) | (123) | (107) | (109) | (104) | (103) | (102) | (106) | (105) | (109) | (114) | | (110) | | |
| PAX Flight | 217,695 | 1,785 | 1,624 | 1,516 | 1,556 | 1,550 | 1,500 | 1,637 | 1,781 | 1,691 | 1,819 | 1,975 | | 18,434 | 55 | 236,129 |
| | | (126) | (126) | (107) | (109) | (104) | (104) | (102) | (106) | (105) | (109) | (113) | | (110) | | |
| Others | 15,606 | 32 | 13 | 29 | 24 | 38 | 35 | 30 | 24 | 27 | 40 | 24 | | 316 | 1 | 15,922 |
| | | (114) | (31) | (138) | (150) | (106) | (63) | (103) | (109) | (123) | (154) | (120) | | (99) | | |
| TERMINAL PASSENGERS | 768,804,427 | 2,513,862 | 2,365,919 | 2,175,406 | 1,672,833 | 2,008,203 | 2,155,387 | 2,503,424 | 2,808,815 | 2,548,859 | 2,481,836 | 2,345,667 | | 25,580,211 | 76,587 | 794,384,638 |
| | | (92) | (91) | (71) | (62) | (72) | (76) | (82) | (87) | (85) | (86) | (94) | | (81) | | |
| International | 741,501,435 | 2,370,536 | 2,233,800 | 2,043,888 | 1,569,720 | 1,888,050 | 2,028,093 | 2,361,141 | 2,639,635 | 2,400,240 | 2,321,020 | 2,181,514 | | 24,037,637 | 71,969 | 765,539,072 |
| | | (91) | (90) | (70) | (61) | (71) | (75) | (81) | (86) | (84) | (85) | (93) | | (80) | | |
| Japanese | 426,996,349 | 1,216,128 | 1,232,871 | 1,185,056 | 896,253 | 1,054,065 | 1,097,614 | 1,306,013 | 1,645,825 | 1,552,309 | 1,360,614 | 1,301,990 | | 13,848,738 | 41,463 | 440,845,087 |
| | | (91) | (93) | (71) | (74) | (77) | (78) | (86) | (92) | (91) | (90) | (99) | | (86) | | |
| Non-Japanese | 167,314,388 | 641,908 | 610,381 | 494,326 | 321,625 | 344,791 | 393,523 | 507,654 | 516,230 | 488,891 | 555,956 | 505,156 | | 5,380,441 | 16,109 | 172,694,829 |
| | | (96) | (89) | (66) | (37) | (48) | (55) | (58) | (64) | (69) | (75) | (82) | | (66) | | |
| Transit | 147,190,698 | 512,500 | 390,548 | 364,506 | 351,842 | 489,194 | 536,956 | 547,474 | 477,580 | 359,040 | 404,450 | 374,368 | | 4,808,458 | 14,397 | 151,999,156 |
| | | (84) | (82) | (73) | (72) | (84) | (91) | (105) | (102) | (84) | (87) | (89) | | (87) | | |
| Domestic | 27,302,992 | 143,326 | 132,119 | 131,518 | 103,113 | 120,153 | 127,294 | 142,283 | 169,180 | 148,619 | 160,816 | 164,153 | | 1,542,574 | 4,618 | 28,845,566 |
| | | (119) | (116) | (98) | (86) | (88) | (91) | (95) | (108) | (102) | (108) | (113) | | (102) | | |
| CARGO (t) | 46,274,929 | 146,658 | 140,608 | 161,119 | 172,905 | 151,969 | 160,920 | 161,880 | 147,939 | 158,165 | 164,233 | 165,661 | | 1,732,057 | 5,186 | 48,006,986 |
| | | (94) | (90) | (83) | (92) | (83) | (87) | (86) | (85) | (87) | (89) | (98) | | (88) | | |
| Loaded | 21,619,080 | 67,943 | 65,786 | 72,815 | 78,610 | 71,783 | 77,479 | 72,485 | 64,577 | 69,979 | 72,196 | 72,097 | | 785,750 | 2,353 | 22,404,830 |
| | | (92) | (89) | (82) | (90) | (81) | (85) | (81) | (80) | (81) | (84) | (93) | | (85) | | |
| Export | 15,801,850 | 54,079 | 54,722 | 57,196 | 62,749 | 57,211 | 62,972 | 58,713 | 50,258 | 55,104 | 56,014 | 55,855 | | 624,873 | 1,871 | 16,426,723 |
| | | (97) | (97) | (86) | (95) | (86) | (89) | (86) | (83) | (81) | (82) | (90) | | (88) | | |
| Transit | 5,817,230 | 13,864 | 11,064 | 15,619 | 15,861 | 14,572 | 14,507 | 13,772 | 14,319 | 14,875 | 16,182 | 16,242 | | 160,877 | 482 | 5,978,107 |
| | | (75) | (63) | (72) | (74) | (66) | (71) | (63) | (70) | (84) | (91) | (103) | | (75) | | |
| Unloaded | 24,655,849 | 78,715 | 74,822 | 88,304 | 94,295 | 80,186 | 83,441 | 89,395 | 83,362 | 88,186 | 92,037 | 93,564 | | 946,307 | 2,833 | 25,602,156 |
| | | (96) | (91) | (84) | (94) | (85) | (89) | (91) | (89) | (93) | (93) | (102) | | (91) | | |
| Import | 18,982,974 | 65,310 | 64,336 | 72,942 | 78,800 | 66,991 | 69,378 | 75,419 | 69,619 | 73,699 | 76,326 | 77,702 | | 790,522 | 2,367 | 19,773,496 |
| | | (102) | (98) | (87) | (99) | (90) | (92) | (97) | (94) | (95) | (94) | (100) | | (95) | | |
| Transit | 5,672,875 | 13,405 | 10,486 | 15,362 | 15,495 | 13,195 | 14,063 | 13,976 | 13,743 | 14,487 | 15,711 | 15,862 | | 155,785 | 466 | 5,828,660 |
| | | (74) | (62) | (74) | (76) | (64) | (75) | (67) | (73) | (85) | (90) | (110) | | (76) | | |
| FUEL SUPPLIED TO AIRCRAFT (kl) | 138,761,730 | 392,111 | 345,238 | 317,266 | 307,450 | 332,064 | 338,187 | 360,231 | 365,478 | 351,624 | 363,731 | 352,214 | | 3,825,594 | 11,454 | 142,587,324 |
| | | (98) | (95) | (78) | (78) | (81) | (84) | (85) | (86) | (87) | (91) | (93) | | (87) | | |

NOTE : ()% ; Changes from the same month of previous year.

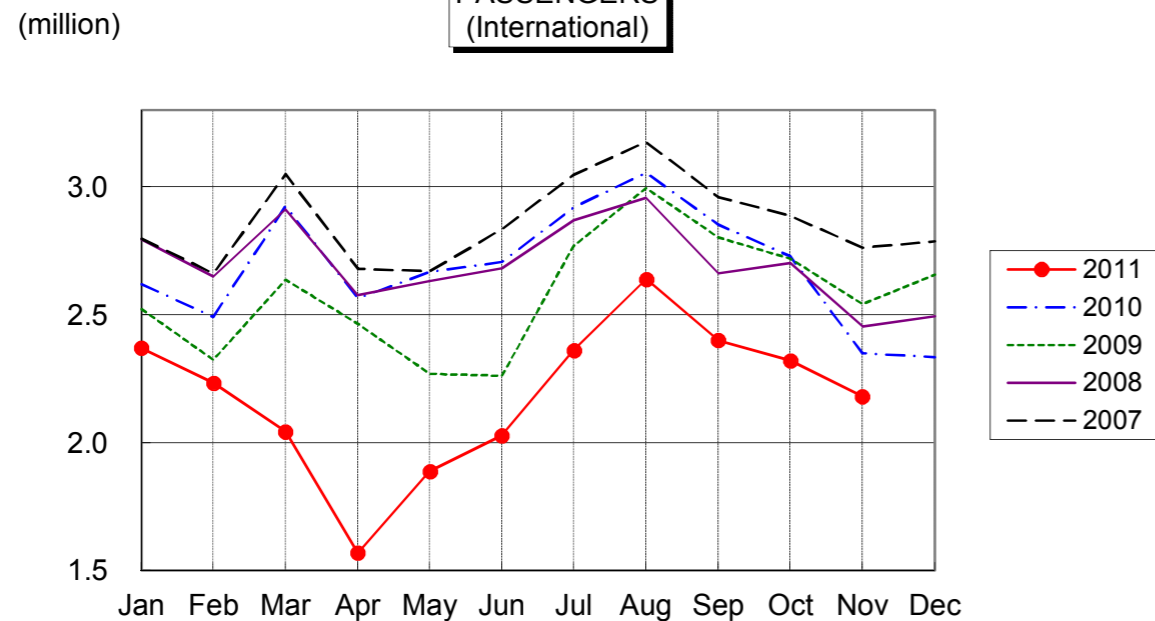
**AIRCRAFT MOVEMENTS
(International)**



**CARGO
(International)**



**PASSENGERS
(International)**



AVIATION FUEL SUPPLIED

