

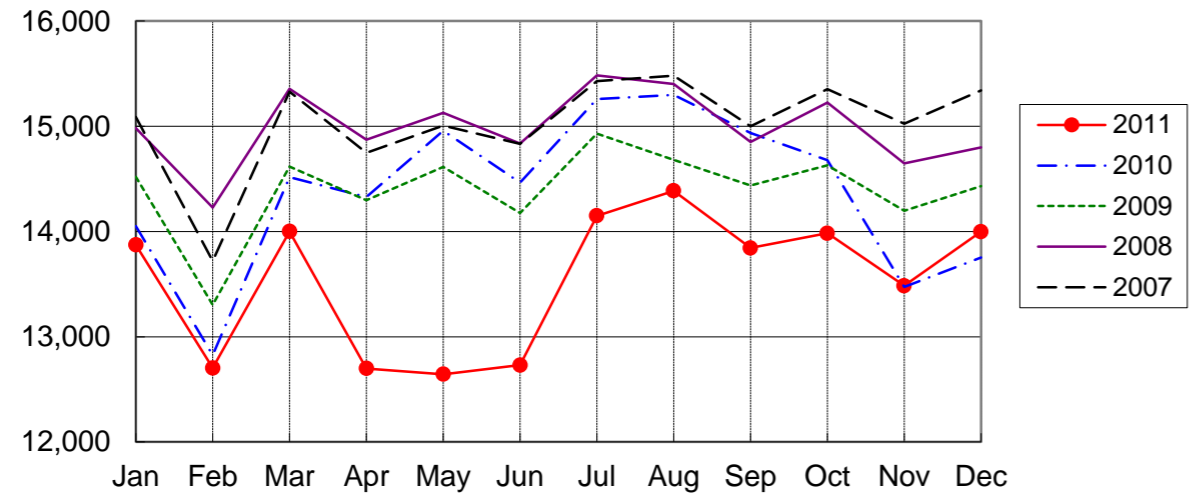
**NARITA AIRPORT TRAFFIC STATISTICS -2011(JAN-DEC)**

NARITA INTERNATIONAL AIRPORT CORPORATION

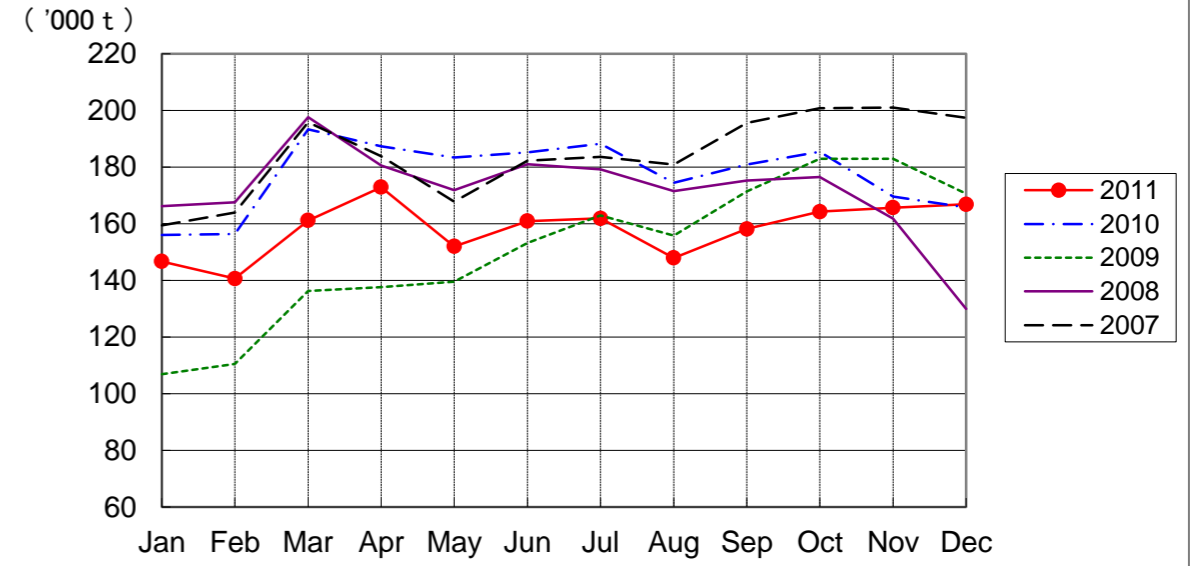
MONTH DESCRIPTION	AGGREGATE 21-May-78~ 31-Dec-10	2011												TOTAL	AVERAGE PER DAY	AGGREGATE 21-May-78 31-Dec-11
		ACTUAL										PROV.				
		JAN	FEB	MAR	APR	MAY	JUN	JUL	AUG	SEP	OCT	NOV	DEC			
<b>AIRCRAFT MOVEMENTS</b>	4,061,653	15,690	14,340	15,545	14,279	14,232	14,265	15,817	16,191	15,561	15,843	15,484	16,204	183,451	503	4,245,104
International	3,828,352	(101)	(101)	(97)	(91)	(86)	(89)	(94)	(95)	(94)	(97)	(102)	(104)	(96)	445	3,990,847
PAX Flight	3,170,892	(99)	(99)	(96)	(89)	(85)	(88)	(93)	(94)	(93)	(95)	(100)	(102)	(94)	380	3,309,636
Cargo Flight	591,859	(99)	(99)	(96)	(87)	(84)	(87)	(92)	(94)	(92)	(95)	(99)	(101)	(93)	60	613,938
Others	65,601	(103)	(100)	(97)	(105)	(92)	(100)	(97)	(96)	(100)	(100)	(112)	(112)	(101)	5	67,273
Domestic	233,301	(67)	(78)	(136)	(63)	(57)	(55)	(71)	(87)	(64)	(66)	(51)	(83)	(73)	57	254,257
PAX Flight	217,695	(125)	(123)	(107)	(109)	(104)	(103)	(102)	(106)	(105)	(109)	(114)	(122)	(111)	56	238,300
Others	15,606	(126)	(126)	(107)	(109)	(104)	(104)	(102)	(106)	(105)	(109)	(113)	(122)	(111)	1	15,957
		(114)	(31)	(138)	(150)	(106)	(63)	(103)	(109)	(123)	(154)	(120)	(167)	(104)		
<b>TERMINAL PASSENGERS</b>	768,804,427	2,513,862	2,365,919	2,175,406	1,672,833	2,008,203	2,155,387	2,503,424	2,808,815	2,548,859	2,481,836	2,345,667	2,488,503	28,068,714	76,901	796,873,141
International	741,501,435	(92)	(91)	(71)	(62)	(72)	(76)	(82)	(87)	(85)	(86)	(94)	(100)	(83)	72,175	767,845,387
Japanese	426,996,349	(91)	(90)	(70)	(61)	(71)	(75)	(81)	(86)	(84)	(85)	(93)	(99)	(82)	41,438	442,121,180
Non-Japanese	167,314,388	(91)	(93)	(71)	(74)	(77)	(78)	(86)	(92)	(91)	(90)	(99)	(105)	(87)	16,294	173,261,735
Transit	147,190,698	(96)	(89)	(66)	(37)	(48)	(55)	(58)	(64)	(69)	(75)	(82)	(90)	(68)	14,443	152,462,472
Domestic	27,302,992	(84)	(82)	(73)	(72)	(84)	(91)	(105)	(102)	(84)	(87)	(89)	(96)	(87)	4,725	29,027,754
		(119)	(116)	(98)	(86)	(88)	(91)	(95)	(108)	(102)	(108)	(113)	(126)	(104)		
<b>CARGO ( t )</b>	46,274,929	146,658	140,608	161,119	172,905	151,969	160,920	161,880	147,939	158,165	164,233	165,661	166,828	1,898,885	5,202	48,173,814
Loaded	21,619,080	(94)	(90)	(83)	(92)	(83)	(87)	(86)	(85)	(87)	(89)	(98)	(101)	(89)	2,356	22,479,118
Export	15,801,850	(92)	(89)	(82)	(90)	(81)	(85)	(81)	(80)	(81)	(84)	(93)	(96)	(86)	1,875	16,486,169
Transit	5,817,230	(97)	(97)	(86)	(95)	(86)	(89)	(86)	(83)	(81)	(82)	(90)	(92)	(88)	481	5,992,949
Unloaded	24,655,849	(75)	(63)	(72)	(74)	(66)	(71)	(63)	(70)	(84)	(91)	(103)	(113)	(77)	2,846	25,694,696
Import	18,982,974	(96)	(91)	(84)	(94)	(85)	(89)	(91)	(89)	(93)	(93)	(102)	(105)	(92)	2,380	19,851,536
Transit	5,672,875	(102)	(98)	(87)	(99)	(90)	(92)	(97)	(94)	(95)	(94)	(100)	(104)	(96)	467	5,843,160
		(74)	(62)	(74)	(76)	(64)	(75)	(67)	(73)	(85)	(90)	(110)	(113)	(78)		
<b>FUEL SUPPLIED TO AIRCRAFT ( kl )</b>	138,761,730	392,111	345,238	317,266	307,450	332,064	338,187	360,231	365,478	351,624	363,731	352,214	371,696	4,197,290	11,499	142,959,020
		(98)	(95)	(78)	(78)	(81)	(84)	(85)	(86)	(87)	(91)	(93)	(96)	(88)		

NOTE : ( )% ; Changes from the same month of previous year.

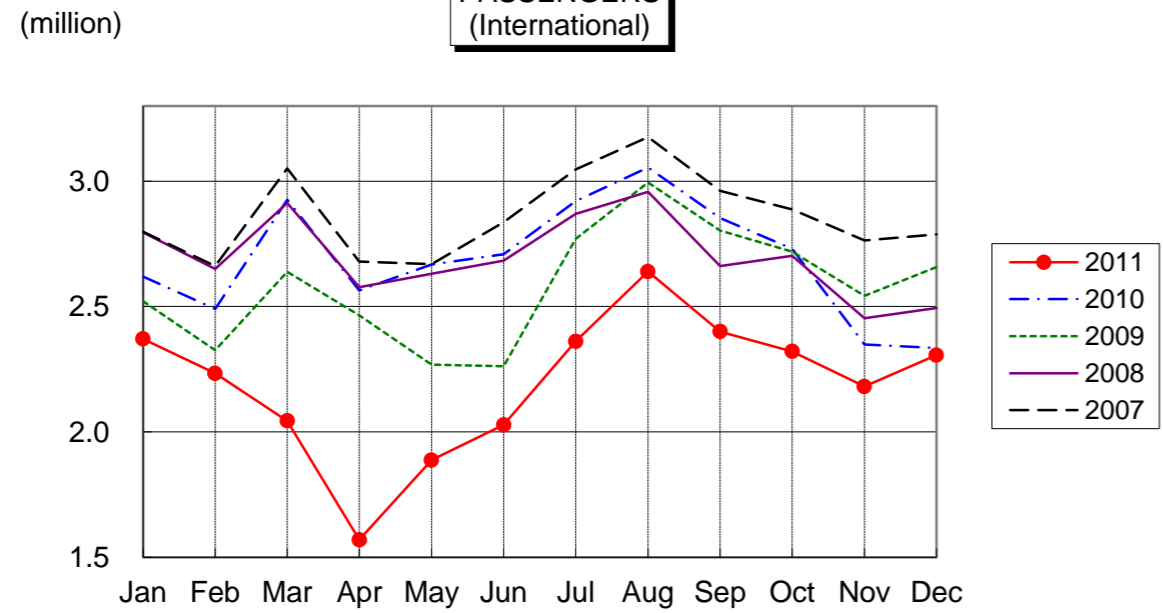
**AIRCRAFT MOVEMENTS**  
(International)



**CARGO**  
(International)



**PASSENGERS**  
(International)



**AVIATION FUEL SUPPLIED**

