

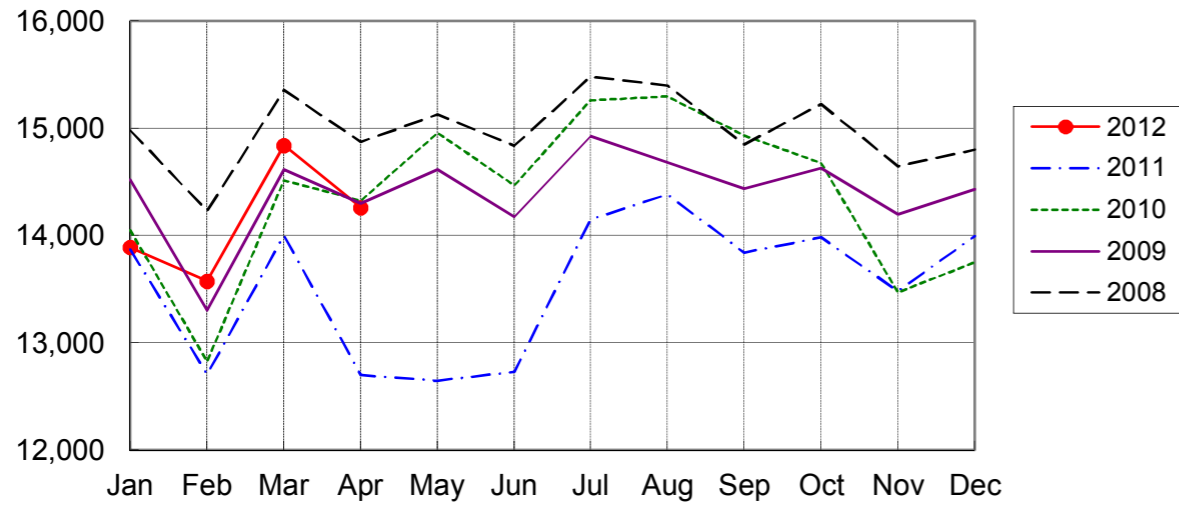
NARITA AIRPORT TRAFFIC STATISTICS -2012(JAN-DEC)

NARITA INTERNATIONAL AIRPORT CORPORATION

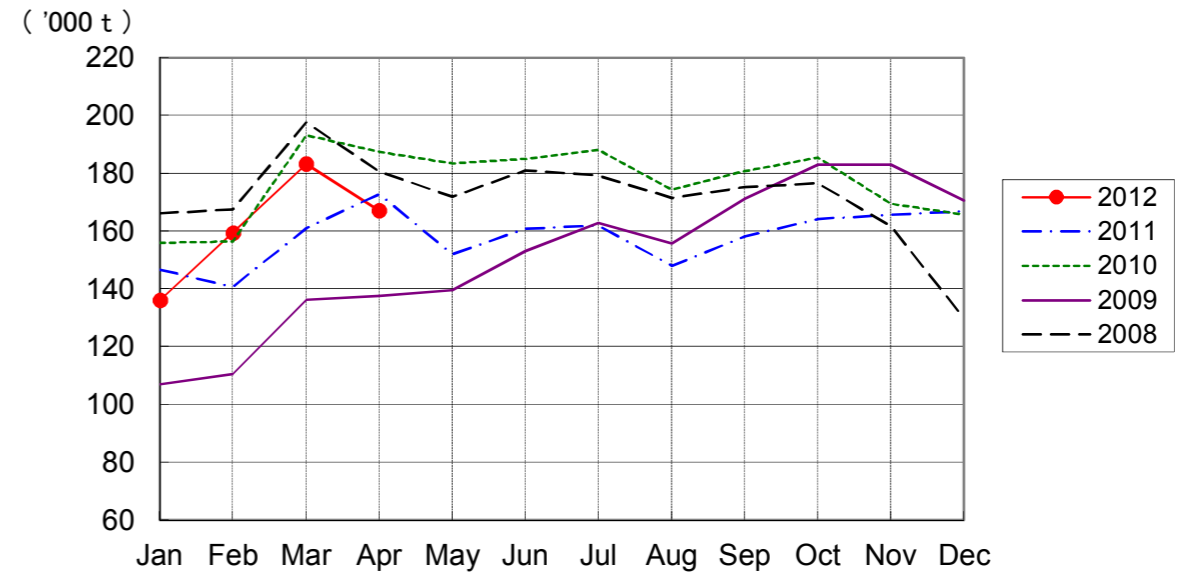
MONTH DESCRIPTION	AGGREGATE 21-May-78~ 31-Dec-11	2012												TOTAL	AVERAGE PER DAY	AGGREGATE 21-May-78 31-Dec-12	
		ACTUAL		PROV.		MAY	JUN	JUL	AUG	SEP	OCT	NOV	DEC				
		JAN	FEB	MAR	APR												
AIRCRAFT MOVEMENTS	4,245,104	16,131	15,846	17,385	16,816										66,178	547	4,311,282
		(103)	(111)	(112)	(118)										(111)		
International	3,990,847	13,891	13,576	14,841	14,263										56,571	468	4,047,418
		(100)	(107)	(106)	(112)										(106)		
PAX Flight	3,309,636	12,167	11,523	12,482	12,109										48,281	399	3,357,917
		(100)	(104)	(105)	(115)										(106)		
Cargo Flight	613,938	1,574	1,929	2,203	1,971										7,677	63	621,615
		(98)	(128)	(120)	(97)										(110)		
Others	67,273	150	124	156	183										613	5	67,886
		(138)	(79)	(58)	(136)										(92)		
Domestic	254,257	2,240	2,270	2,544	2,553										9,607	79	263,864
		(123)	(139)	(165)	(162)										(146)		
PAX Flight	238,300	2,222	2,249	2,503	2,396										9,370	77	247,670
		(124)	(138)	(165)	(154)										(145)		
Others	15,957	18	21	41	157										237	2	16,194
		(56)	(162)	(141)	(654)										(242)		
TERMINAL PASSENGERS	796,873,141	2,549,983	2,454,791	2,833,612	2,530,459										10,368,845	85,693	807,241,986
		(101)	(104)	(130)	(151)										(119)		
International	767,845,387	2,359,417	2,266,293	2,604,403	2,343,417										9,573,530	79,120	777,418,917
		(100)	(101)	(127)	(149)										(116)		
Japanese	442,121,180	1,229,432	1,365,345	1,595,226	1,189,657										5,379,660	44,460	447,500,840
		(101)	(111)	(135)	(133)										(119)		
Non-Japanese	173,261,735	599,789	503,000	621,679	723,996										2,448,464	20,235	175,710,199
		(93)	(82)	(126)	(225)										(118)		
Transit	152,462,472	530,196	397,948	387,498	429,764										1,745,406	14,425	154,207,878
		(103)	(102)	(106)	(122)										(108)		
Domestic	29,027,754	190,566	188,498	229,209	187,042										795,315	6,573	29,823,069
		(133)	(143)	(174)	(181)										(156)		
CARGO (t)	48,173,994	136,104	159,519	183,273	167,135										646,031	5,339	48,820,025
		(93)	(113)	(114)	(97)										(104)		
Loaded	22,479,118	61,852	71,623	82,171	76,659										292,305	2,416	22,771,423
		(91)	(109)	(113)	(98)										(103)		
Export	16,486,169	47,257	56,579	62,228	56,847										222,911	1,842	16,709,080
		(87)	(103)	(109)	(91)										(97)		
Transit	5,992,949	14,595	15,044	19,943	19,812										69,394	574	6,062,343
		(105)	(136)	(128)	(125)										(123)		
Unloaded	25,694,876	74,252	87,896	101,102	90,476										353,726	2,923	26,048,602
		(94)	(117)	(114)	(96)										(105)		
Import	19,851,536	61,433	72,858	81,305	71,218										286,814	2,370	20,138,350
		(94)	(113)	(111)	(90)										(102)		
Transit	5,843,340	12,819	15,038	19,797	19,258										66,912	553	5,910,252
		(96)	(143)	(129)	(124)										(122)		
FUEL SUPPLIED TO AIRCRAFT (kl)	142,959,020	369,227	357,144	388,155	381,833										1,496,359	12,367	144,455,379
		(94)	(103)	(122)	(124)										(110)		

NOTE : ()% ; Changes from the same month of previous year.

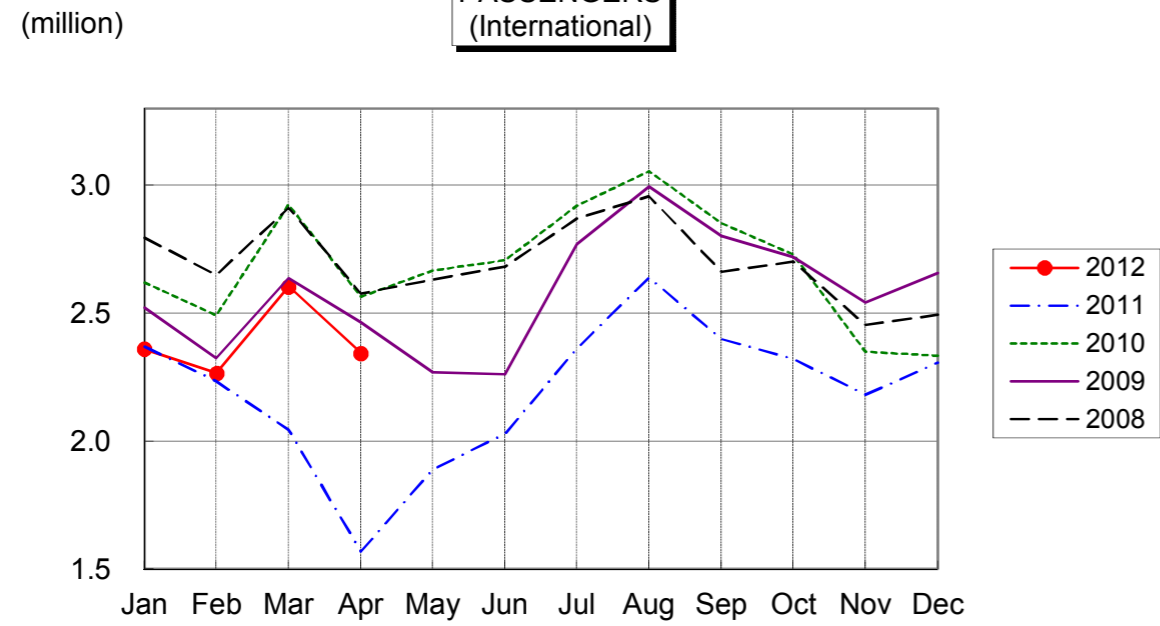
AIRCRAFT MOVEMENTS
(International)



CARGO
(International)



PASSENGERS
(International)



AVIATION FUEL SUPPLIED

