

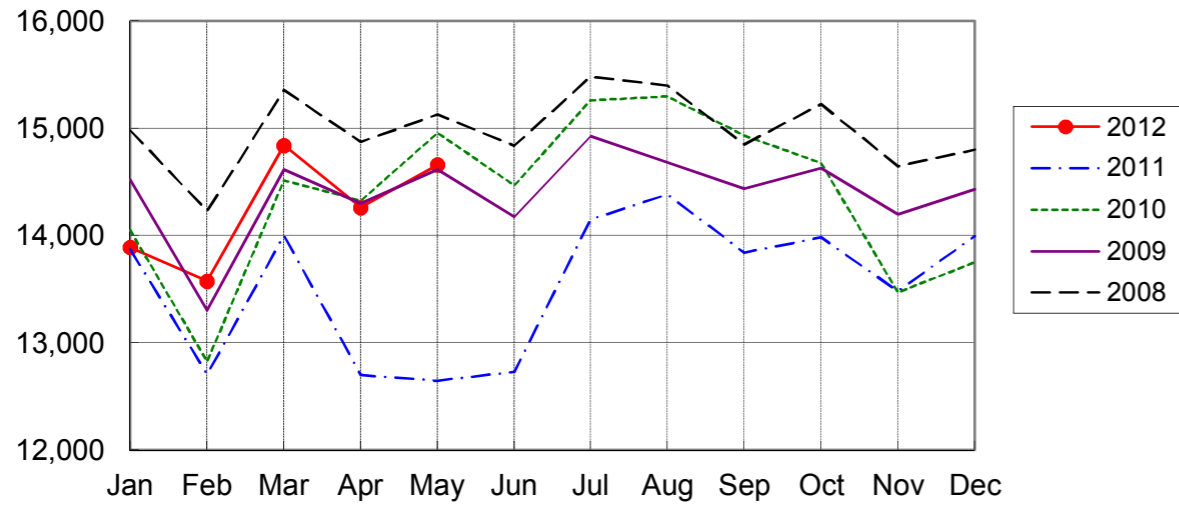
NARITA AIRPORT TRAFFIC STATISTICS -2012(JAN-DEC)

NARITA INTERNATIONAL AIRPORT CORPORATION

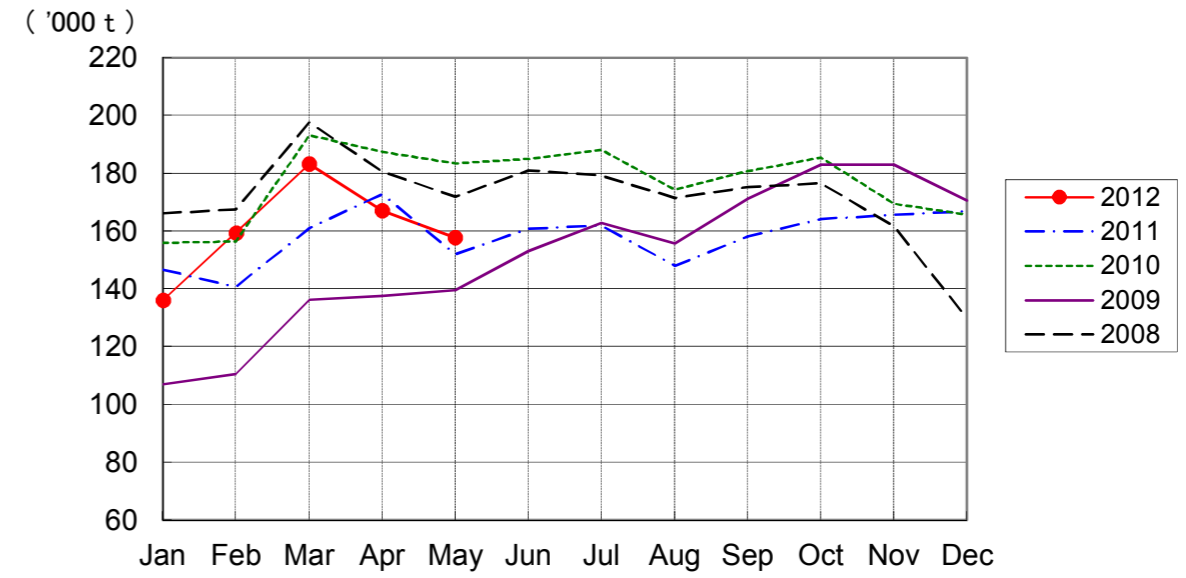
MONTH DESCRIPTION	AGGREGATE 21-May-78~ 31-Dec-11	2012												TOTAL	AVERAGE PER DAY	AGGREGATE 21-May-78 31-Dec-12	
		ACTUAL			PROV.		JUN	JUL	AUG	SEP	OCT	NOV	DEC				
		JAN	FEB	MAR	APR	MAY											
AIRCRAFT MOVEMENTS	4,245,104	16,131	15,846	17,385	16,816	17,370									83,548	550	4,328,652
		(103)	(111)	(112)	(118)	(122)									(113)		
International	3,990,847	13,891	13,576	14,841	14,263	14,659									71,230	469	4,062,077
		(100)	(107)	(106)	(112)	(116)									(108)		
PAX Flight	3,309,636	12,167	11,523	12,482	12,109	12,503									60,784	400	3,370,420
		(100)	(104)	(105)	(115)	(116)									(108)		
Cargo Flight	613,938	1,574	1,929	2,203	1,971	1,953									9,630	63	623,568
		(98)	(128)	(120)	(97)	(114)									(111)		
Others	67,273	150	124	156	183	203									816	5	68,089
		(138)	(79)	(58)	(136)	(185)									(105)		
Domestic	254,257	2,240	2,270	2,544	2,553	2,711									12,318	81	266,575
		(123)	(139)	(165)	(162)	(171)									(151)		
PAX Flight	238,300	2,222	2,249	2,503	2,396	2,538									11,908	78	250,208
		(124)	(138)	(165)	(154)	(164)									(148)		
Others	15,957	18	21	41	157	173									410	3	16,367
		(56)	(162)	(141)	(654)	(455)									(301)		
TERMINAL PASSENGERS	796,873,141	2,549,983	2,454,791	2,833,612	2,530,459	2,599,204									12,968,049	85,316	809,841,190
		(101)	(104)	(130)	(151)	(129)									(121)		
International	767,845,387	2,359,417	2,266,293	2,604,403	2,343,417	2,398,735									11,972,265	78,765	779,817,652
		(100)	(101)	(127)	(149)	(127)									(118)		
Japanese	442,121,180	1,229,432	1,365,345	1,595,226	1,189,657	1,269,939									6,649,599	43,747	448,770,779
		(101)	(111)	(135)	(133)	(120)									(119)		
Non-Japanese	173,261,735	599,789	503,000	621,679	723,996	582,924									3,031,388	19,943	176,293,123
		(93)	(82)	(126)	(225)	(169)									(126)		
Transit	152,462,472	530,196	397,948	387,498	429,764	545,872									2,291,278	15,074	154,753,750
		(103)	(102)	(106)	(122)	(112)									(109)		
Domestic	29,027,754	190,566	188,498	229,209	187,042	200,469									995,784	6,551	30,023,538
		(133)	(143)	(174)	(181)	(167)									(158)		
CARGO (t)	48,173,994	136,104	159,519	183,273	167,135	157,781									803,812	5,288	48,977,806
		(93)	(113)	(114)	(97)	(104)									(104)		
Loaded	22,479,118	61,852	71,623	82,171	76,659	70,738									363,043	2,388	22,842,161
		(91)	(109)	(113)	(98)	(99)									(102)		
Export	16,486,169	47,257	56,579	62,228	56,847	51,261									274,172	1,804	16,760,341
		(87)	(103)	(109)	(91)	(90)									(96)		
Transit	5,992,949	14,595	15,044	19,943	19,812	19,477									88,871	585	6,081,820
		(105)	(136)	(128)	(125)	(134)									(125)		
Unloaded	25,694,876	74,252	87,896	101,102	90,476	87,043									440,769	2,900	26,135,645
		(94)	(117)	(114)	(96)	(109)									(106)		
Import	19,851,536	61,433	72,858	81,305	71,218	68,514									355,328	2,338	20,206,864
		(94)	(113)	(111)	(90)	(102)									(102)		
Transit	5,843,340	12,819	15,038	19,797	19,258	18,529									85,441	562	5,928,781
		(96)	(143)	(129)	(124)	(140)									(126)		
FUEL SUPPLIED TO AIRCRAFT (kl)	142,959,020	369,227	357,144	388,155	381,833	381,051									1,877,410	12,351	144,836,430
		(94)	(103)	(122)	(124)	(115)									(111)		

NOTE : ()% ; Changes from the same month of previous year.

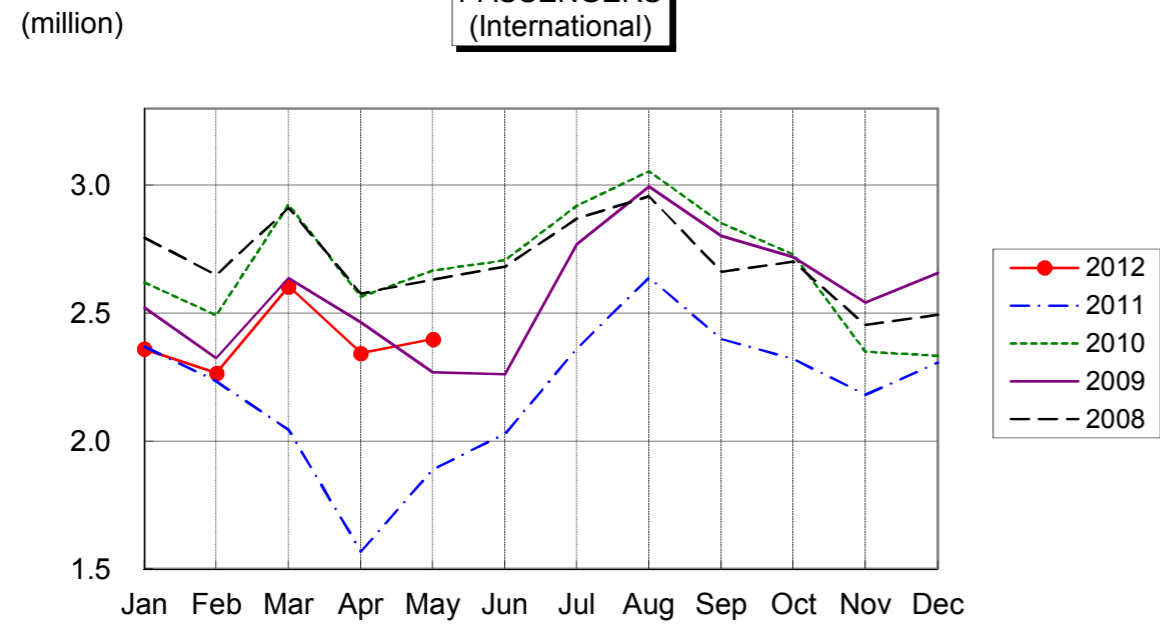
AIRCRAFT MOVEMENTS
(International)



CARGO
(International)



PASSENGERS
(International)



AVIATION FUEL SUPPLIED

