

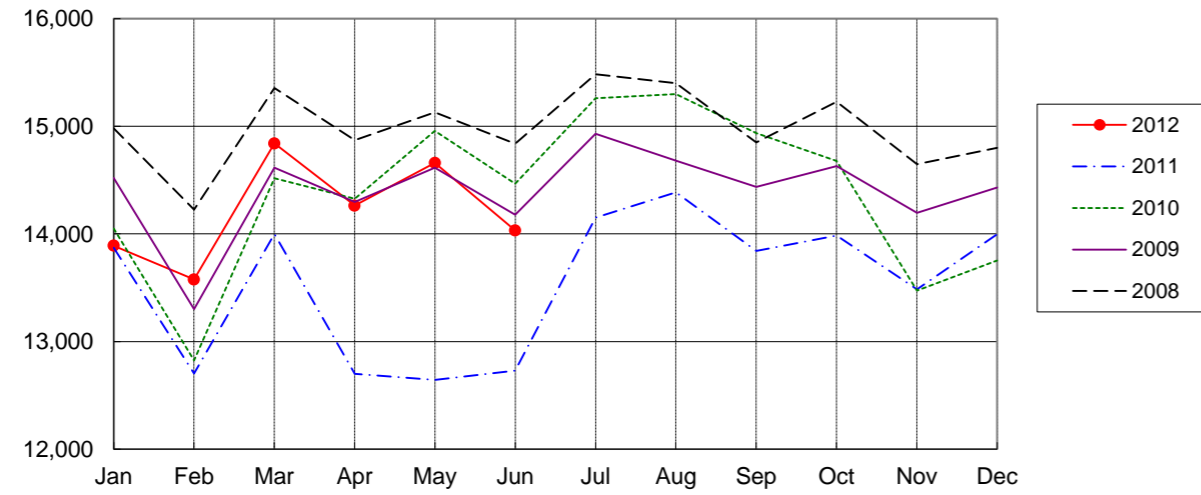
NARITA AIRPORT TRAFFIC STATISTICS -2012(JAN-DEC)

NARITA INTERNATIONAL AIRPORT CORPORATION

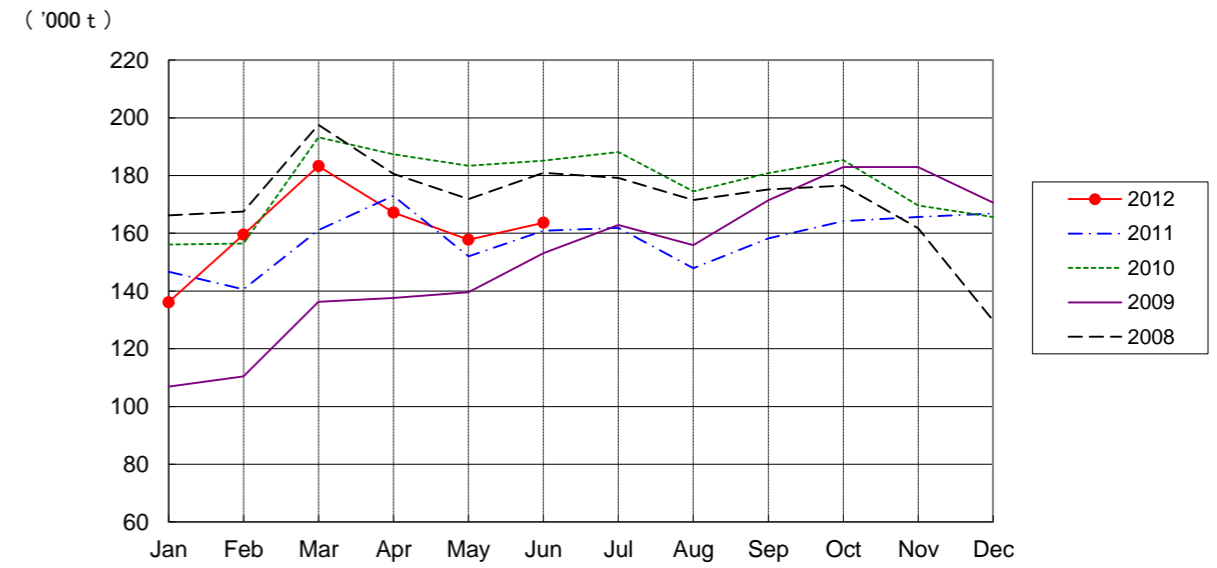
MONTH DESCRIPTION	AGGREGATE 21-May-78~ 31-Dec-11	2012												TOTAL	AVERAGE PER DAY	AGGREGATE 21-May-78 31-Dec-12									
		ACTUAL				PROV.				JAN	FEB	MAR	APR				MAY	JUN	JUL	AUG	SEP	OCT	NOV	DEC	
AIRCRAFT MOVEMENTS	4,245,104	16,131	15,846	17,385	16,816	17,370	16,778																100,326	551	4,345,430
		(103)	(111)	(112)	(118)	(122)	(118)																(114)		
International	3,990,847	13,891	13,576	14,841	14,263	14,659	14,032																85,262	468	4,076,109
		(100)	(107)	(106)	(112)	(116)	(110)																(108)		
PAX Flight	3,309,636	12,167	11,523	12,482	12,109	12,503	11,943																72,727	400	3,382,363
		(100)	(104)	(105)	(115)	(116)	(112)																(108)		
Cargo Flight	613,938	1,574	1,929	2,203	1,971	1,953	1,971																11,601	64	625,539
		(98)	(128)	(120)	(97)	(114)	(101)																(109)		
Others	67,273	150	124	156	183	203	118																934	5	68,207
		(138)	(79)	(58)	(136)	(185)	(118)																(106)		
Domestic	254,257	2,240	2,270	2,544	2,553	2,711	2,746																15,064	83	269,321
		(123)	(139)	(165)	(162)	(171)	(179)																(155)		
PAX Flight	238,300	2,222	2,249	2,503	2,396	2,538	2,426																14,334	79	252,634
		(124)	(138)	(165)	(154)	(164)	(162)																(150)		
Others	15,957	18	21	41	157	173	320																730	4	16,687
		(56)	(162)	(141)	(654)	(455)	(914)																(427)		
TERMINAL PASSENGERS	796,873,141	2,549,983	2,454,791	2,833,612	2,530,459	2,599,204	2,653,400																15,621,449	85,832	812,494,590
		(101)	(104)	(130)	(151)	(129)	(123)																(121)		
International	767,845,387	2,359,417	2,266,293	2,604,403	2,343,417	2,398,735	2,456,139																14,428,404	79,277	782,273,791
		(100)	(101)	(127)	(149)	(127)	(121)																(119)		
Japanese	442,121,180	1,229,432	1,365,345	1,595,226	1,189,657	1,269,939	1,293,340																7,942,939	43,643	450,064,119
		(101)	(111)	(135)	(133)	(120)	(118)																(119)		
Non-Japanese	173,261,735	599,789	503,000	621,679	723,996	582,924	595,599																3,626,987	19,929	176,888,722
		(93)	(82)	(126)	(225)	(169)	(151)																(129)		
Transit	152,462,472	530,196	397,948	387,498	429,764	545,872	567,200																2,858,478	15,706	155,320,950
		(103)	(102)	(106)	(122)	(112)	(106)																(108)		
Domestic	29,027,754	190,566	188,498	229,209	187,042	200,469	197,261																1,193,045	6,555	30,220,799
		(133)	(143)	(174)	(181)	(167)	(155)																(157)		
CARGO (t)	48,173,994	136,104	159,519	183,273	167,135	157,781	163,637																967,449	5,316	49,141,443
		(93)	(113)	(114)	(97)	(104)	(102)																(104)		
Loaded	22,479,118	61,852	71,623	82,171	76,659	70,738	74,358																437,401	2,403	22,916,519
		(91)	(109)	(113)	(98)	(99)	(96)																(101)		
Export	16,486,169	47,257	56,579	62,228	56,847	51,261	54,851																329,023	1,808	16,815,192
		(87)	(103)	(109)	(91)	(90)	(87)																(94)		
Transit	5,992,949	14,595	15,044	19,943	19,812	19,477	19,507																108,378	595	6,101,327
		(105)	(136)	(128)	(125)	(134)	(134)																(127)		
Unloaded	25,694,876	74,252	87,896	101,102	90,476	87,043	89,279																530,048	2,912	26,224,924
		(94)	(117)	(114)	(96)	(109)	(107)																(106)		
Import	19,851,536	61,433	72,858	81,305	71,218	68,514	70,048																425,376	2,337	20,276,912
		(94)	(113)	(111)	(90)	(102)	(101)																(102)		
Transit	5,843,340	12,819	15,038	19,797	19,258	18,529	19,231																104,672	575	5,948,012
		(96)	(143)	(129)	(124)	(140)	(137)																(128)		
FUEL SUPPLIED TO AIRCRAFT (kl)	142,959,020	369,227	357,144	388,155	381,833	381,051	378,888																2,256,298	12,397	145,215,318
		(94)	(103)	(122)	(124)	(115)	(112)																(111)		

NOTE : ()% ; Changes from the same month of previous year.

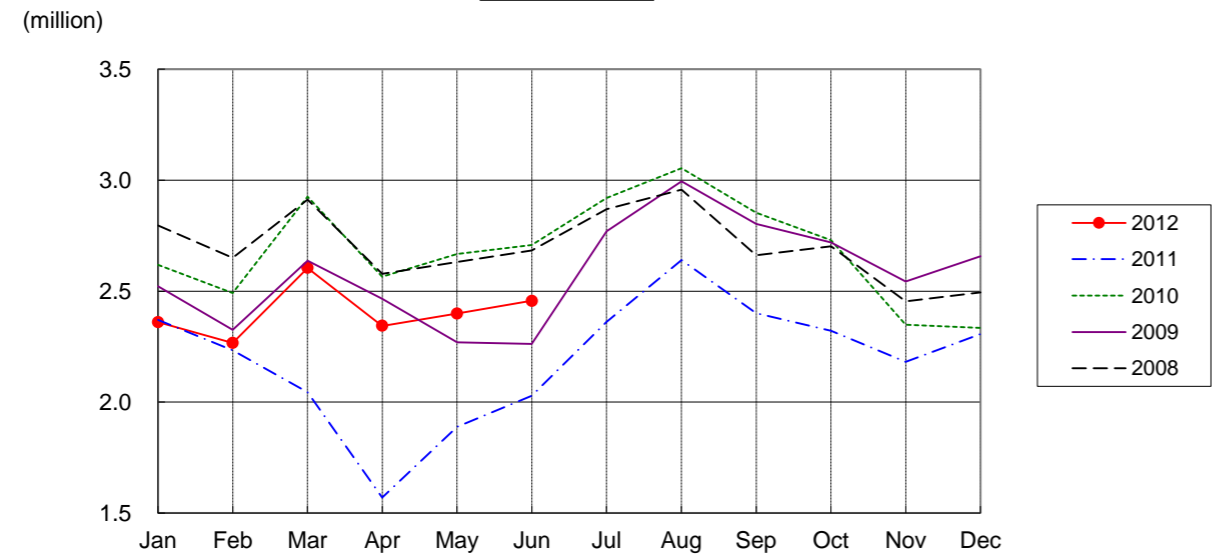
AIRCRAFT MOVEMENTS
(International)



CARGO
(International)



PASSENGERS
(International)



AVIATION FUEL SUPPLIED

