

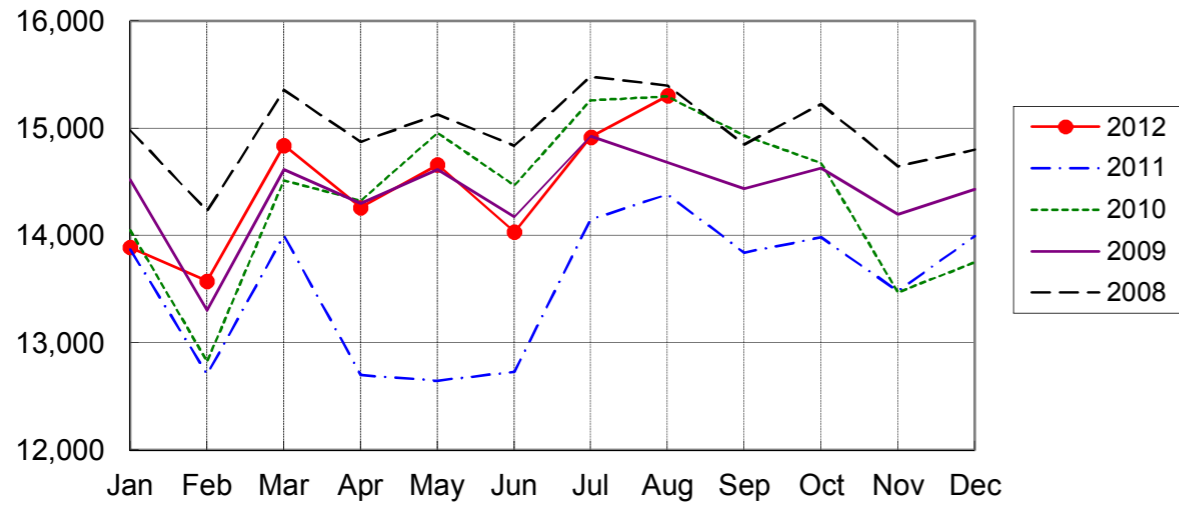
NARITA AIRPORT TRAFFIC STATISTICS -2012(JAN-DEC)

NARITA INTERNATIONAL AIRPORT CORPORATION

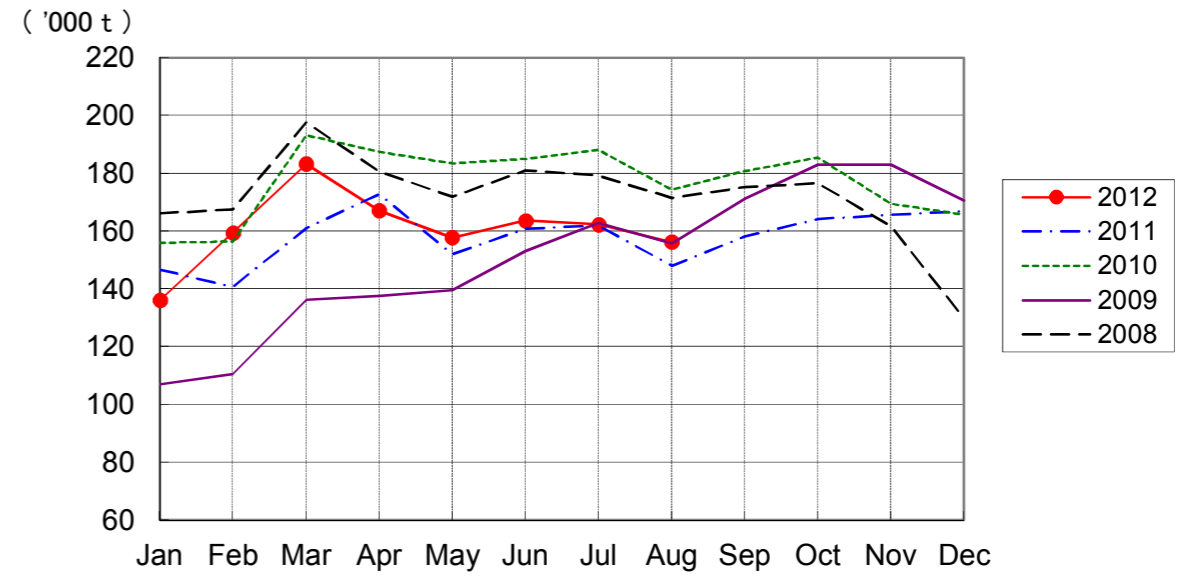
MONTH DESCRIPTION	AGGREGATE 21-May-78~ 31-Dec-11	2012												TOTAL	AVERAGE PER DAY	AGGREGATE 21-May-78 31-Dec-12
		ACTUAL						PROV.								
		JAN	FEB	MAR	APR	MAY	JUN	JUL	AUG	SEP	OCT	NOV	DEC			
AIRCRAFT MOVEMENTS	4,254,103	16,131	15,846	17,385	16,816	17,370	16,778	17,967	18,664					136,957	561	4,382,060
		(103)	(111)	(112)	(118)	(122)	(118)	(114)	(115)					(114)		
International	3,990,847	13,891	13,576	14,841	14,263	14,659	14,032	14,921	15,305					115,488	473	4,106,335
		(100)	(107)	(106)	(112)	(116)	(110)	(105)	(106)					(108)		
PAX Flight	3,309,636	12,167	11,523	12,482	12,109	12,503	11,943	12,796	13,238					98,761	405	3,408,397
		(100)	(104)	(105)	(115)	(116)	(112)	(106)	(106)					(108)		
Cargo Flight	613,938	1,574	1,929	2,203	1,971	1,953	1,971	2,008	1,917					15,526	64	629,464
		(98)	(128)	(120)	(97)	(114)	(101)	(102)	(107)					(108)		
Others	67,273	150	124	156	183	203	118	117	150					1,201	5	68,474
		(138)	(79)	(58)	(136)	(185)	(118)	(104)	(95)					(105)		
Domestic	254,256	2,240	2,270	2,544	2,553	2,711	2,746	3,046	3,359					21,469	88	275,725
		(123)	(139)	(165)	(162)	(171)	(179)	(183)	(186)					(163)		
PAX Flight	238,300	2,222	2,249	2,503	2,396	2,538	2,426	2,764	3,278					20,376	84	258,676
		(124)	(138)	(165)	(154)	(164)	(162)	(169)	(184)					(157)		
Others	15,956	18	21	41	157	173	320	282	81					1,093	4	17,049
		(56)	(162)	(141)	(654)	(455)	(914)	(940)	(338)					(486)		
TERMINAL PASSENGERS	796,873,141	2,549,983	2,454,791	2,833,612	2,530,459	2,599,204	2,653,400	2,932,927	3,294,083					21,848,459	89,543	818,721,600
		(101)	(104)	(130)	(151)	(129)	(123)	(117)	(117)					(120)		
International	767,845,387	2,359,417	2,266,293	2,604,403	2,343,417	2,398,735	2,456,139	2,648,913	2,888,007					19,965,324	81,825	787,810,711
		(100)	(101)	(127)	(149)	(127)	(121)	(112)	(109)					(117)		
Japanese	442,121,180	1,229,432	1,365,345	1,595,226	1,189,657	1,269,939	1,293,340	1,409,406	1,749,105					11,101,450	45,498	453,222,630
		(101)	(111)	(135)	(133)	(120)	(118)	(108)	(106)					(115)		
Non-Japanese	173,261,735	599,789	503,000	621,679	723,996	582,924	595,599	703,565	685,390					5,015,942	20,557	178,277,677
		(93)	(82)	(126)	(225)	(169)	(151)	(139)	(133)					(131)		
Transit	152,462,472	530,196	397,948	387,498	429,764	545,872	567,200	535,942	453,512					3,847,932	15,770	156,310,404
		(103)	(102)	(106)	(122)	(112)	(106)	(98)	(95)					(105)		
Domestic	29,027,754	190,566	188,498	229,209	187,042	200,469	197,261	284,014	406,076					1,883,135	7,718	30,910,889
		(133)	(143)	(174)	(181)	(167)	(155)	(200)	(240)					(176)		
CARGO (t)	48,173,994	136,104	159,519	183,273	167,135	157,781	163,637	162,358	156,309					1,286,116	5,271	49,460,110
		(93)	(113)	(114)	(97)	(104)	(102)	(100)	(106)					(103)		
Loaded	22,479,118	61,852	71,623	82,171	76,659	70,738	74,358	71,531	69,980					578,912	2,373	23,058,030
		(91)	(109)	(113)	(98)	(99)	(96)	(99)	(108)					(101)		
Export	16,486,169	47,257	56,579	62,228	56,847	51,261	54,851	49,470	48,560					427,053	1,750	16,913,222
		(87)	(103)	(109)	(91)	(90)	(87)	(84)	(97)					(93)		
Transit	5,992,949	14,595	15,044	19,943	19,812	19,477	19,507	22,061	21,420					151,859	622	6,144,808
		(105)	(136)	(128)	(125)	(134)	(134)	(160)	(150)					(134)		
Unloaded	25,694,876	74,252	87,896	101,102	90,476	87,043	89,279	90,827	86,329					707,204	2,898	26,402,080
		(94)	(117)	(114)	(96)	(109)	(107)	(102)	(104)					(105)		
Import	19,851,536	61,433	72,858	81,305	71,218	68,514	70,048	69,605	65,418					560,399	2,297	20,411,935
		(94)	(113)	(111)	(90)	(102)	(101)	(92)	(94)					(100)		
Transit	5,843,340	12,819	15,038	19,797	19,258	18,529	19,231	21,222	20,911					146,805	602	5,990,145
		(96)	(143)	(129)	(124)	(140)	(137)	(152)	(152)					(134)		
FUEL SUPPLIED TO AIRCRAFT (kl)	142,959,020	369,227	357,144	388,155	381,833	381,051	378,888	397,196	407,831					3,061,325	12,546	146,020,345
		(94)	(103)	(122)	(124)	(115)	(112)	(110)	(112)					(111)		

NOTE : ()% ; Changes from the same month of previous year.

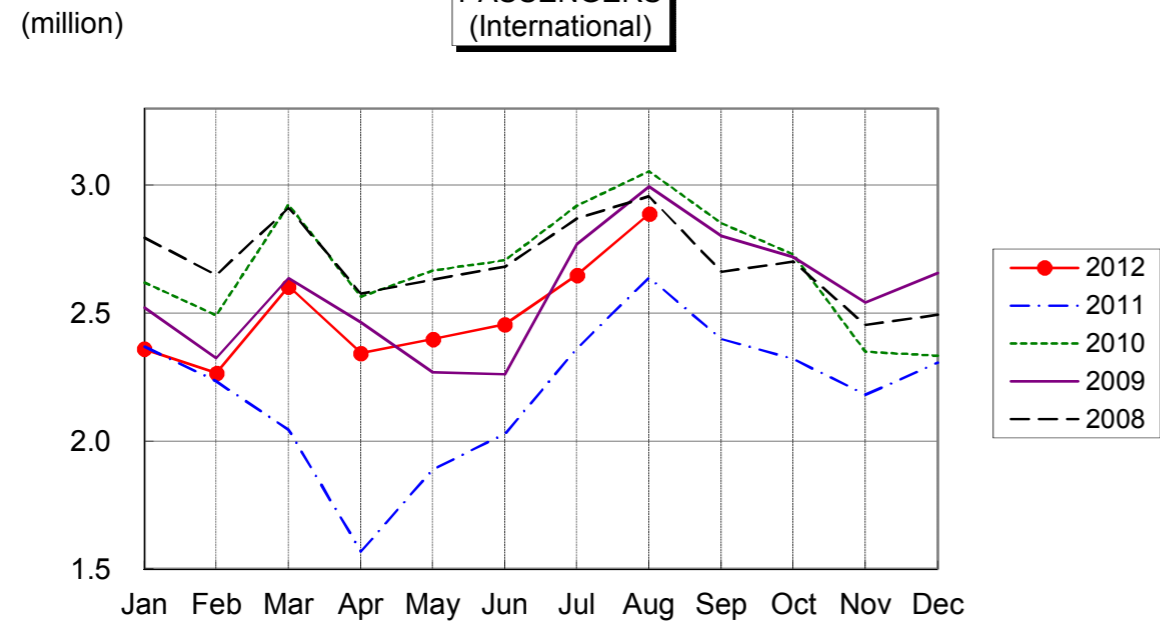
AIRCRAFT MOVEMENTS
(International)



CARGO
(International)



PASSENGERS
(International)



AVIATION FUEL SUPPLIED

