

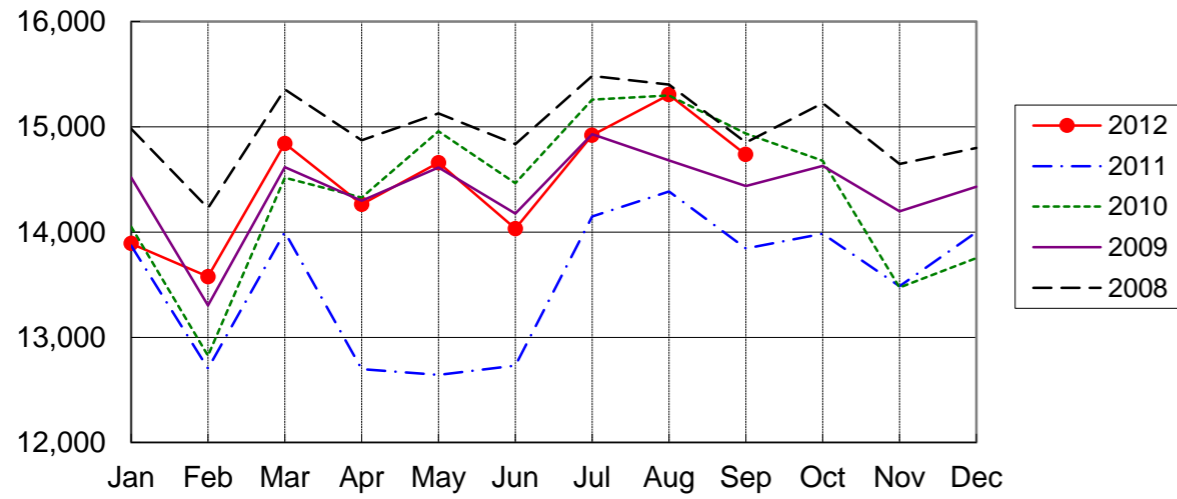
NARITA AIRPORT TRAFFIC STATISTICS -2012(JAN-DEC)

NARITA INTERNATIONAL AIRPORT CORPORATION

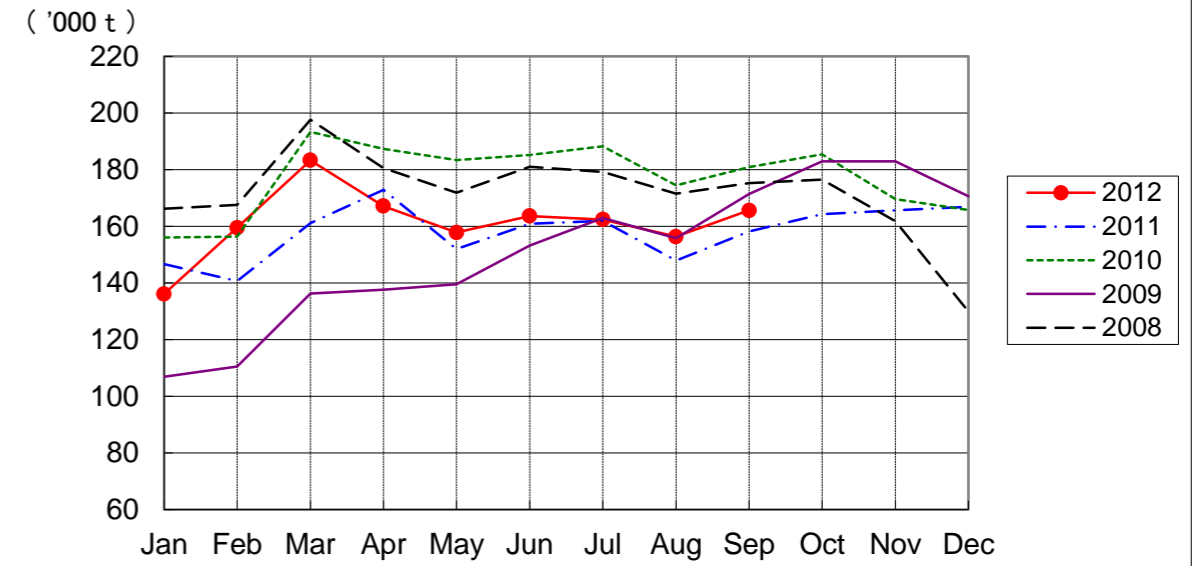
MONTH DESCRIPTION	AGGREGATE 21-May-78~ 31-Dec-11	2012											TOTAL	AVERAGE PER DAY	AGGREGATE 21-May-78 31-Dec-12	
		ACTUAL							PROV.							
		JAN	FEB	MAR	APR	MAY	JUN	JUL	AUG	SEP	OCT	NOV				DEC
AIRCRAFT MOVEMENTS	4,254,103	16,131 (103)	15,846 (111)	17,385 (112)	16,816 (118)	17,370 (122)	16,778 (118)	17,967 (114)	18,664 (115)	18,081 (116)				155,038 (114)	566	4,400,141
International	3,990,847	13,891 (100)	13,576 (107)	14,841 (106)	14,263 (112)	14,659 (116)	14,032 (110)	14,921 (105)	15,305 (106)	14,736 (106)				130,224 (108)	475	4,121,071
PAX Flight	3,309,636	12,167 (100)	11,523 (104)	12,482 (105)	12,109 (115)	12,503 (116)	11,943 (112)	12,796 (106)	13,238 (106)	12,521 (106)				111,282 (108)	406	3,420,918
Cargo Flight	613,938	1,574 (98)	1,929 (128)	2,203 (120)	1,971 (97)	1,953 (114)	1,971 (101)	2,008 (102)	1,917 (107)	2,046 (109)				17,572 (108)	64	631,510
Others	67,273	150 (138)	124 (79)	156 (58)	183 (136)	203 (185)	118 (118)	117 (104)	150 (95)	169 (112)				1,370 (105)	5	68,643
Domestic	254,256	2,240 (123)	2,270 (139)	2,544 (165)	2,553 (162)	2,711 (171)	2,746 (179)	3,046 (183)	3,359 (186)	3,345 (195)				24,814 (167)	91	279,070
PAX Flight	238,300	2,222 (124)	2,249 (138)	2,503 (165)	2,396 (154)	2,538 (164)	2,426 (162)	2,764 (169)	3,278 (184)	3,283 (194)				23,659 (162)	86	261,959
Others	15,956	18 (56)	21 (162)	41 (141)	157 (683)	173 (455)	320 (914)	282 (940)	81 (338)	62 (230)				1,155 (460)	4	17,111
TERMINAL PASSENGERS	796,873,141	2,549,983 (101)	2,454,791 (104)	2,833,612 (130)	2,530,459 (151)	2,599,204 (129)	2,653,400 (123)	2,932,927 (117)	3,294,083 (117)	2,872,066 (113)				24,720,525 (119)	90,221	821,593,666
International	767,845,387	2,359,417 (100)	2,266,293 (101)	2,604,403 (127)	2,343,417 (149)	2,398,735 (127)	2,456,139 (121)	2,648,913 (112)	2,888,007 (109)	2,519,276 (105)				22,484,600 (115)	82,061	790,329,987
Japanese	442,121,180	1,229,432 (101)	1,365,345 (111)	1,595,226 (135)	1,189,657 (133)	1,269,939 (120)	1,293,340 (118)	1,409,406 (108)	1,749,105 (106)	1,525,520 (98)				12,626,970 (113)	46,084	454,748,150
Non-Japanese	173,261,735	599,789 (93)	503,000 (82)	621,679 (126)	723,996 (225)	582,924 (169)	595,599 (151)	703,565 (139)	685,390 (133)	571,690 (117)				5,587,632 (129)	20,393	178,849,367
Transit	152,462,472	530,196 (103)	397,948 (102)	387,498 (106)	429,764 (122)	545,872 (112)	567,200 (106)	535,942 (98)	453,512 (95)	422,066 (118)				4,269,998 (106)	15,584	156,732,470
Domestic	29,027,754	190,566 (133)	188,498 (143)	229,209 (174)	187,042 (181)	200,469 (167)	197,261 (155)	284,014 (200)	406,076 (240)	352,790 (237)				2,235,925 (184)	8,160	31,263,679
CARGO (t)	48,173,994	136,104 (93)	159,519 (113)	183,273 (114)	167,135 (97)	157,781 (104)	163,637 (102)	162,358 (100)	156,309 (106)	165,587 (105)				1,451,703 (104)	5,298	49,625,697
Loaded	22,479,118	61,852 (91)	71,623 (109)	82,171 (113)	76,659 (98)	70,738 (99)	74,358 (96)	71,531 (99)	69,980 (108)	74,289 (106)				653,201 (102)	2,384	23,132,319
Export	16,486,169	47,257 (87)	56,579 (103)	62,228 (109)	56,847 (91)	51,261 (90)	54,851 (87)	49,470 (84)	48,560 (97)	51,750 (94)				478,803 (93)	1,747	16,964,972
Transit	5,992,949	14,595 (105)	15,044 (136)	19,943 (128)	19,812 (125)	19,477 (134)	19,507 (134)	22,061 (160)	21,420 (150)	22,539 (152)				174,398 (136)	636	6,167,347
Unloaded	25,694,876	74,252 (94)	87,896 (117)	101,102 (114)	90,476 (96)	87,043 (109)	89,279 (107)	90,827 (102)	86,329 (104)	91,298 (104)				798,502 (105)	2,914	26,493,378
Import	19,851,536	61,433 (94)	72,858 (113)	81,305 (111)	71,218 (90)	68,514 (102)	70,048 (101)	69,605 (92)	65,418 (94)	69,466 (94)				629,865 (99)	2,299	20,481,401
Transit	5,843,340	12,819 (96)	15,038 (143)	19,797 (129)	19,258 (124)	18,529 (140)	19,231 (137)	21,222 (152)	20,911 (152)	21,832 (151)				168,637 (136)	615	6,011,977
FUEL SUPPLIED TO AIRCRAFT (kl)	142,959,020	369,227 (94)	357,144 (103)	388,155 (122)	381,833 (124)	381,051 (115)	378,888 (112)	397,196 (110)	407,831 (112)	386,470 (110)				3,447,795 (111)	12,583	146,406,815

NOTE : ()% ; Changes from the same month of previous year.

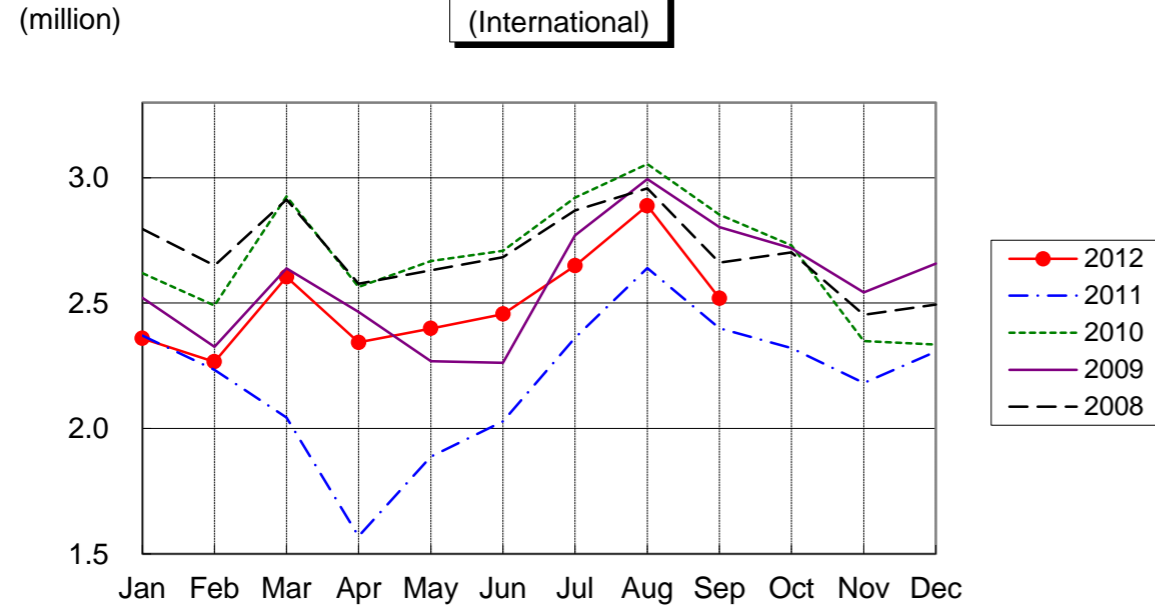
AIRCRAFT MOVEMENTS
(International)



CARGO
(International)



PASSENGERS
(International)



AVIATION FUEL SUPPLIED

