

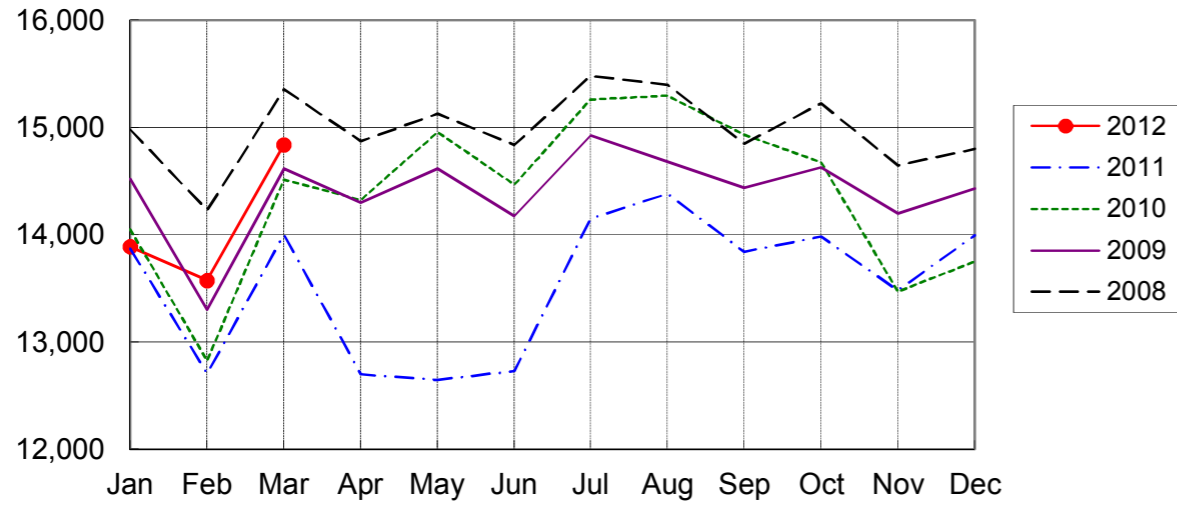
NARITA AIRPORT TRAFFIC STATISTICS -2012(JAN-DEC)

NARITA INTERNATIONAL AIRPORT CORPORATION

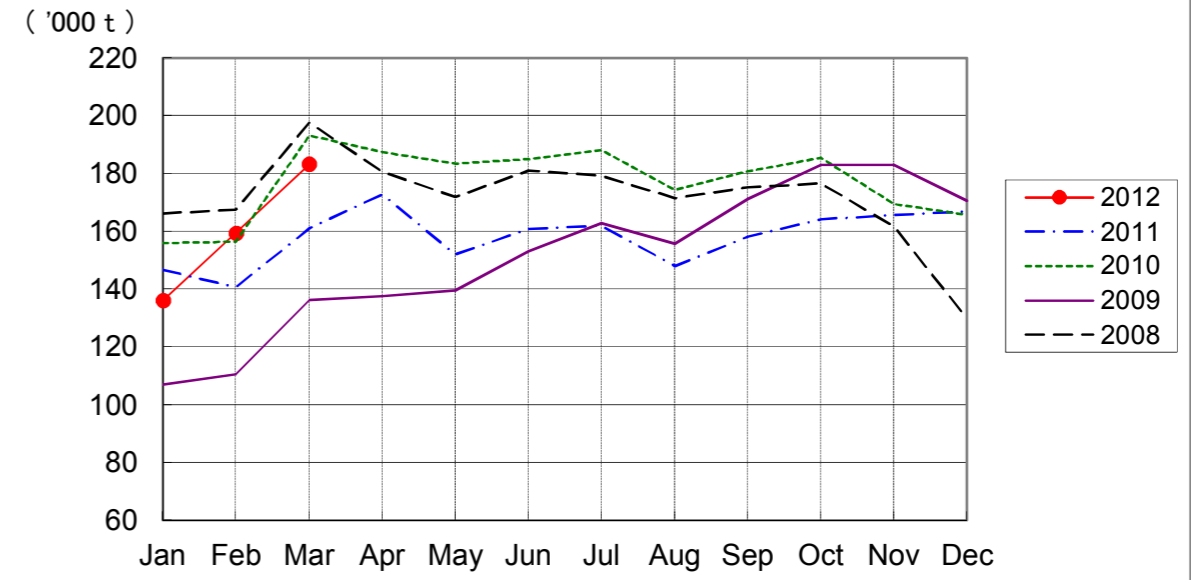
MONTH DESCRIPTION	AGGREGATE 21-May-78~ 31-Dec-11	2012												TOTAL	AVERAGE PER DAY	AGGREGATE 21-May-78 31-Dec-12	
		ACTUAL JAN	PROV. FEB MAR APR			MAY	JUN	JUL	AUG	SEP	OCT	NOV	DEC				
AIRCRAFT MOVEMENTS	4,245,104	16,131	15,846	17,385											49,362	542	4,294,466
		(103)	(111)	(112)											(108)		
International	3,990,847	13,891	13,576	14,841											42,308	465	4,033,155
		(100)	(107)	(106)											(104)		
PAX Flight	3,309,636	12,167	11,523	12,482											36,172	397	3,345,808
		(100)	(104)	(105)											(103)		
Cargo Flight	613,938	1,574	1,929	2,203											5,706	63	619,644
		(98)	(128)	(120)											(115)		
Others	67,273	150	124	156											430	5	67,703
		(138)	(79)	(58)											(81)		
Domestic	254,257	2,240	2,270	2,544											7,054	78	261,311
		(123)	(139)	(165)											(141)		
PAX Flight	238,300	2,222	2,249	2,503											6,974	77	245,274
		(124)	(138)	(165)											(142)		
Others	15,957	18	21	41											80	1	16,037
		(56)	(162)	(141)											(108)		
TERMINAL PASSENGERS	796,873,141	2,549,983	2,454,791	2,833,612											7,838,386	86,136	804,711,527
		(101)	(104)	(130)											(111)		
International	767,845,387	2,359,417	2,266,293	2,604,403											7,230,113	79,452	775,075,500
		(100)	(101)	(127)											(109)		
Japanese	442,121,180	1,229,432	1,365,345	1,595,226											4,190,003	46,044	446,311,183
		(101)	(111)	(135)											(115)		
Non-Japanese	173,261,735	599,789	503,000	621,679											1,724,468	18,950	174,986,203
		(93)	(82)	(126)											(99)		
Transit	152,462,472	530,196	397,948	387,498											1,315,642	14,458	153,778,114
		(103)	(102)	(106)											(104)		
Domestic	29,027,754	190,566	188,498	229,209											608,273	6,684	29,636,027
		(133)	(143)	(174)											(149)		
CARGO (t)	48,173,994	136,104	159,519	183,273											478,896	5,263	48,652,890
		(93)	(113)	(114)											(107)		
Loaded	22,479,118	61,852	71,623	82,171											215,646	2,370	22,694,764
		(91)	(109)	(113)											(104)		
Export	16,486,169	47,257	56,579	62,228											166,064	1,825	16,652,233
		(87)	(103)	(109)											(100)		
Transit	5,992,949	14,595	15,044	19,943											49,582	545	6,042,531
		(105)	(136)	(128)											(122)		
Unloaded	25,694,876	74,252	87,896	101,102											263,250	2,893	25,958,126
		(94)	(117)	(114)											(109)		
Import	19,851,536	61,433	72,858	81,305											215,596	2,369	20,067,132
		(94)	(113)	(111)											(106)		
Transit	5,843,340	12,819	15,038	19,797											47,654	524	5,890,994
		(96)	(143)	(129)											(121)		
FUEL SUPPLIED TO AIRCRAFT (kl)	142,959,020	369,227	357,144	388,155											1,114,526	12,248	144,073,546
		(94)	(103)	(122)											(106)		

NOTE : ()% ; Changes from the same month of previous year.

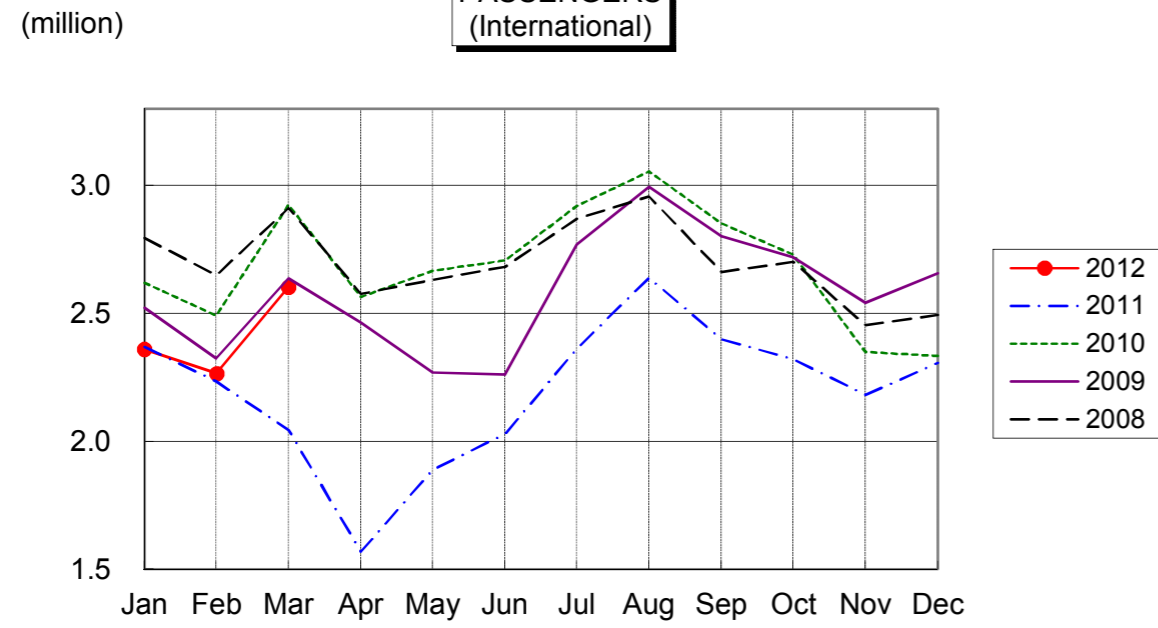
AIRCRAFT MOVEMENTS
(International)



CARGO
(International)



PASSENGERS
(International)



AVIATION FUEL SUPPLIED

