

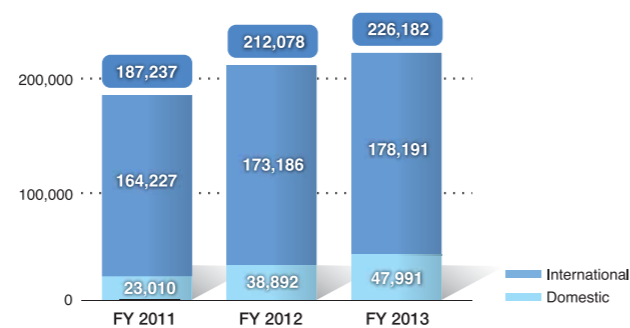


Operational Results Fiscal 2013

With new and additional international and domestic services, the volume of traffic handled at Narita Airport in fiscal 2013 continued to be upbeat.

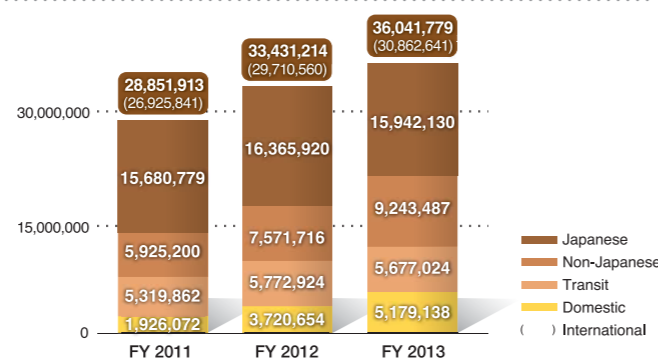
Aircraft Movements

A major increase in domestic services by Japan's LCC carriers as well as international services in the summer and winter schedules of 2013 produced a 6.7% increase in aircraft movements over the previous year to 226,182 per annum, a new record.



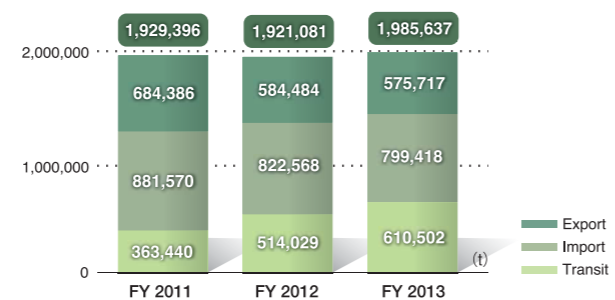
Passengers

Due to a greater number of visitors from abroad resulting from the depreciated yen, and visa exemption and deregulation for travelers from Southeast Asia, as well as growth in domestic passenger figures due to new and additional LCC services, passenger figures increased 7.8% to 36,041,779, another record figure.

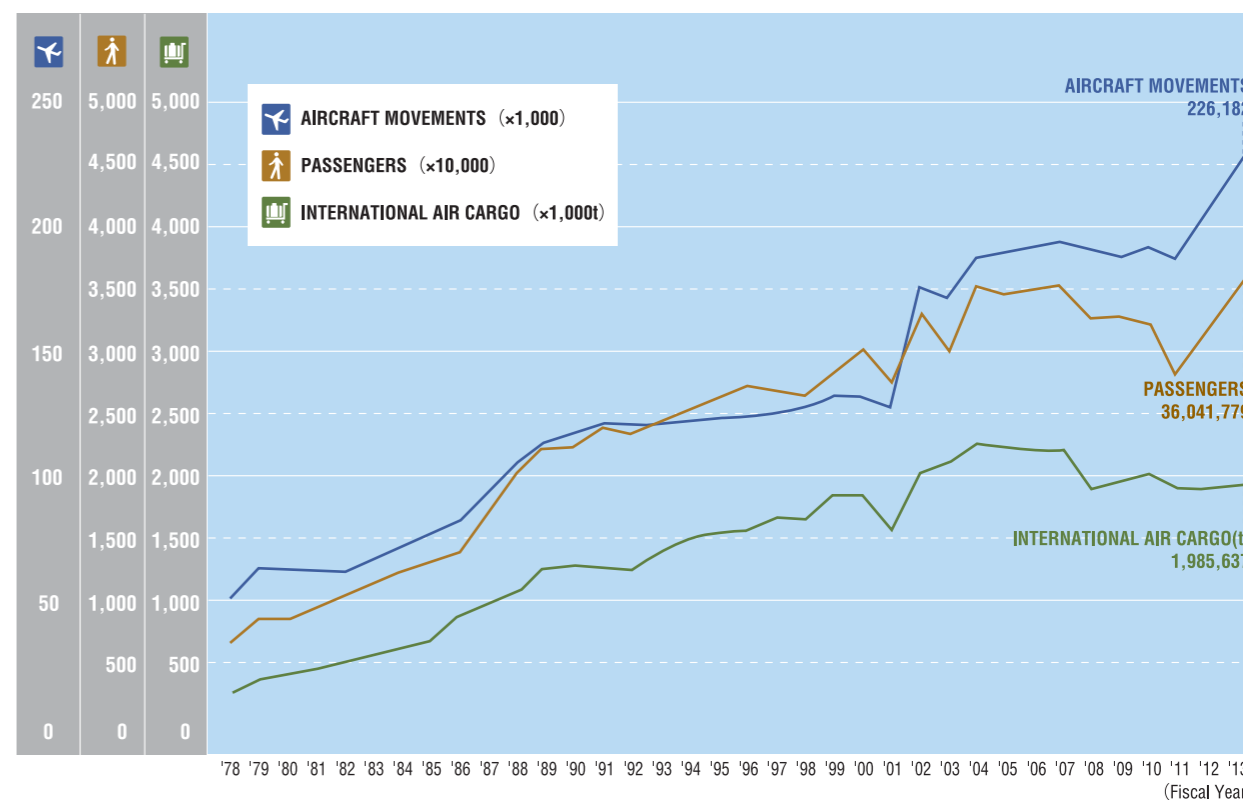


International Air Cargo

Although imports and exports declined due to changes in the structure of manufacturer production sites, an increase in transit cargo produced a 3.4% increase in international air cargo to 1,985,637 tonnes.



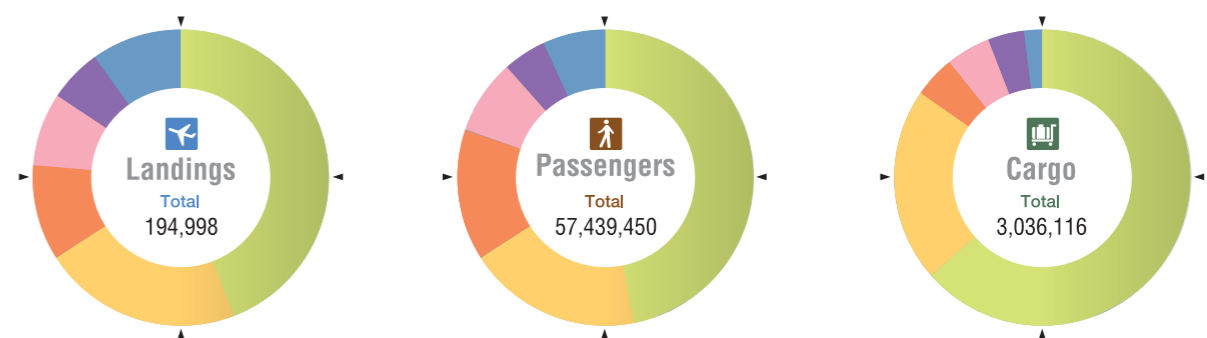
Traffic Analysis: Aircraft Movements, Passengers and Cargo



Since opening, the development of the airport has continued as demand has grown for air transport in Greater Tokyo Capital Area, and aircraft movements, passenger and air cargo traffic have generally continued to improve. Since 2001, a series of major events in the form of international terrorism, financial crises and the Great East Japan Earthquake have had a major impact on demand for aviation. However, in 2012, the cumulative total of passengers and international air cargo exceeded 800 million people and 50 million tonnes. In 2013, aircraft movements and passenger figures were the highest on record.

Narita Airport's Share of International Service in Japan (Fiscal 2012)

Source: Ministry of Land, Infrastructure, Transport and Tourism



Category	Location	Value	Share (%)
Landings (Total: 194,998)	Narita	86,619	44.4%
	Kansai	42,353	21.7%
	Haneda	20,309	10.4%
	Chubu	15,406	7.9%
	Fukuoka	10,970	5.7%
	Others	19,341	9.9%
Passengers (Total: 57,439,450)	Narita	26,881,528	46.8%
	Kansai	11,245,425	19.6%
	Haneda	7,948,089	13.8%
	Chubu	4,343,217	7.6%
	Fukuoka	3,039,507	5.3%
	Others	3,981,684	6.9%
Cargo (Total: 3,036,116)	Narita	1,921,081	63.3%
	Kansai	654,134	21.5%
	Haneda	140,915	4.6%
	Naha	139,220	4.6%
	Chubu	111,082	3.7%
	Others	69,684	2.3%